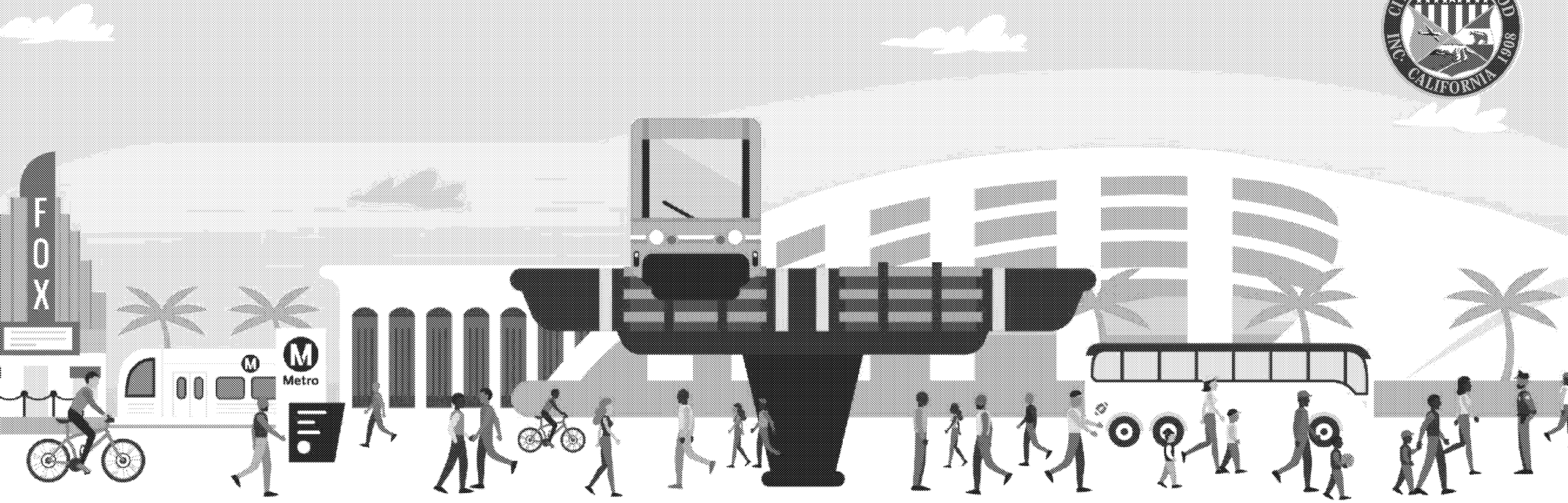
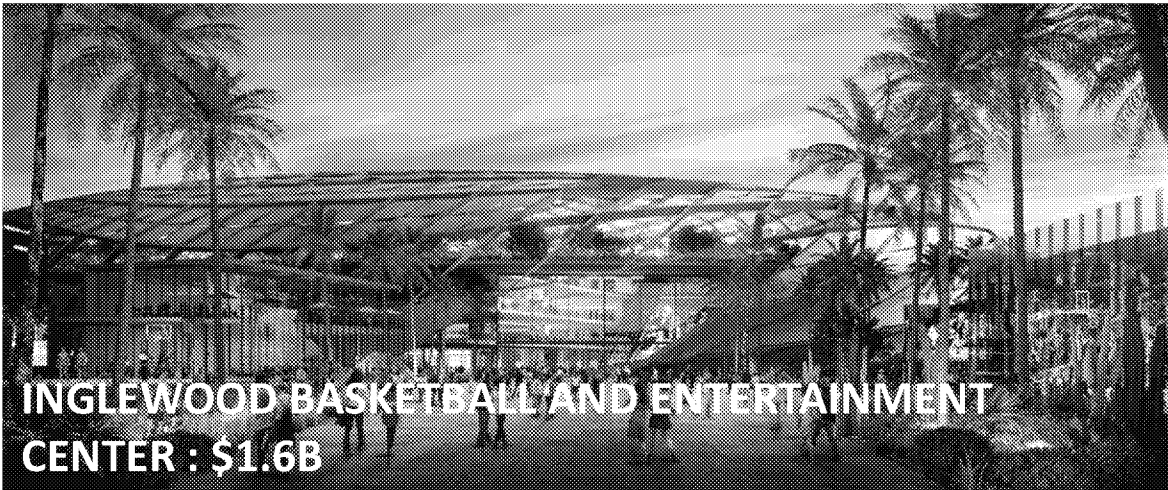
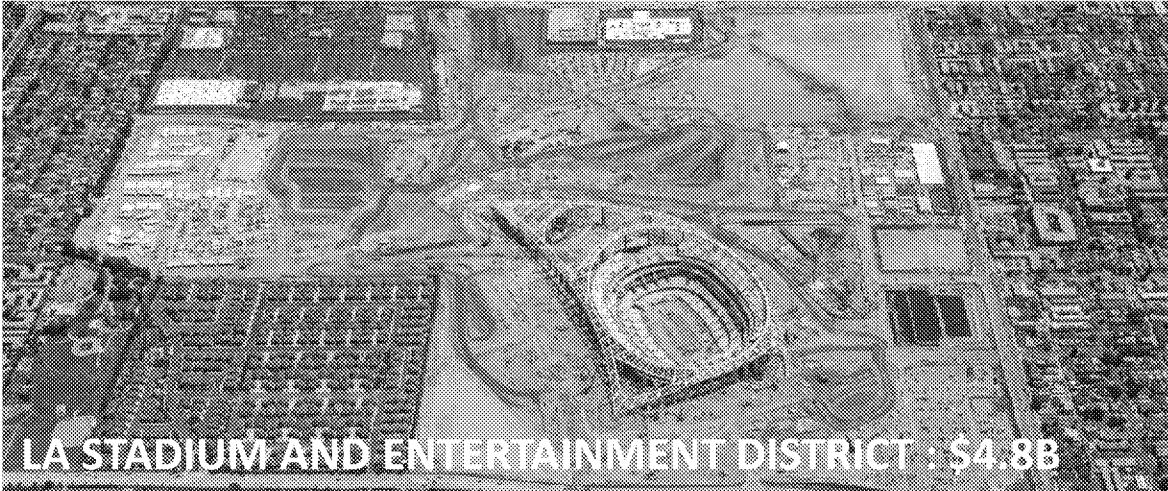


ENVISION Inglewood

Connecting People, Places, and the Future



Historic Transformative Investments



Los Angeles Stadium & Entertainment District (LASED)



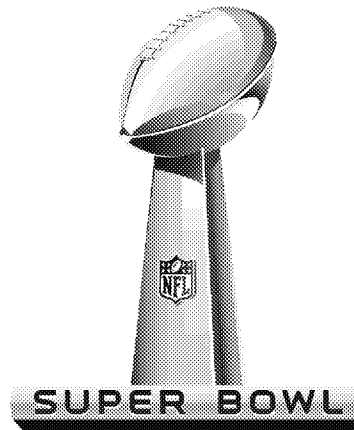
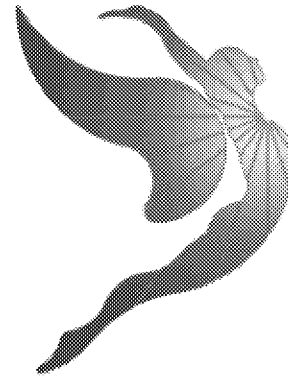
NFL Stadium to open in Fall 2020!

LASED Developer's Plans include:

- State-of-the art NFL Stadium (70,000 seats)
- Performing arts venue (6,000 seats)
- Public parks and open space (approx. 25 acres), pedestrian walkways, and bike paths
- New retail space (850,000+ sf)
- New office space (750,000+ sf)
- New residences (2,500 units)
- New hotel (300 rooms)

Vision for City of Inglewood World Class Sports and Entertainment Center

- SoFi Stadium | 2020
- Youth Orchestra Los Angeles (LA Philharmonic) | Fall 2020
- Super Bowl LVI | Winter 2022
- Los Angeles Clippers | Fall 2024
- FIFA World Cup | Fall 2026
- Olympic Games | Summer 2028





Inglewood Mobility Plan



Inglewood Transit Connector

City's Transportation Planning Work Underway



Transportation Management & Operations Plan



Neighborhood Protection Plan

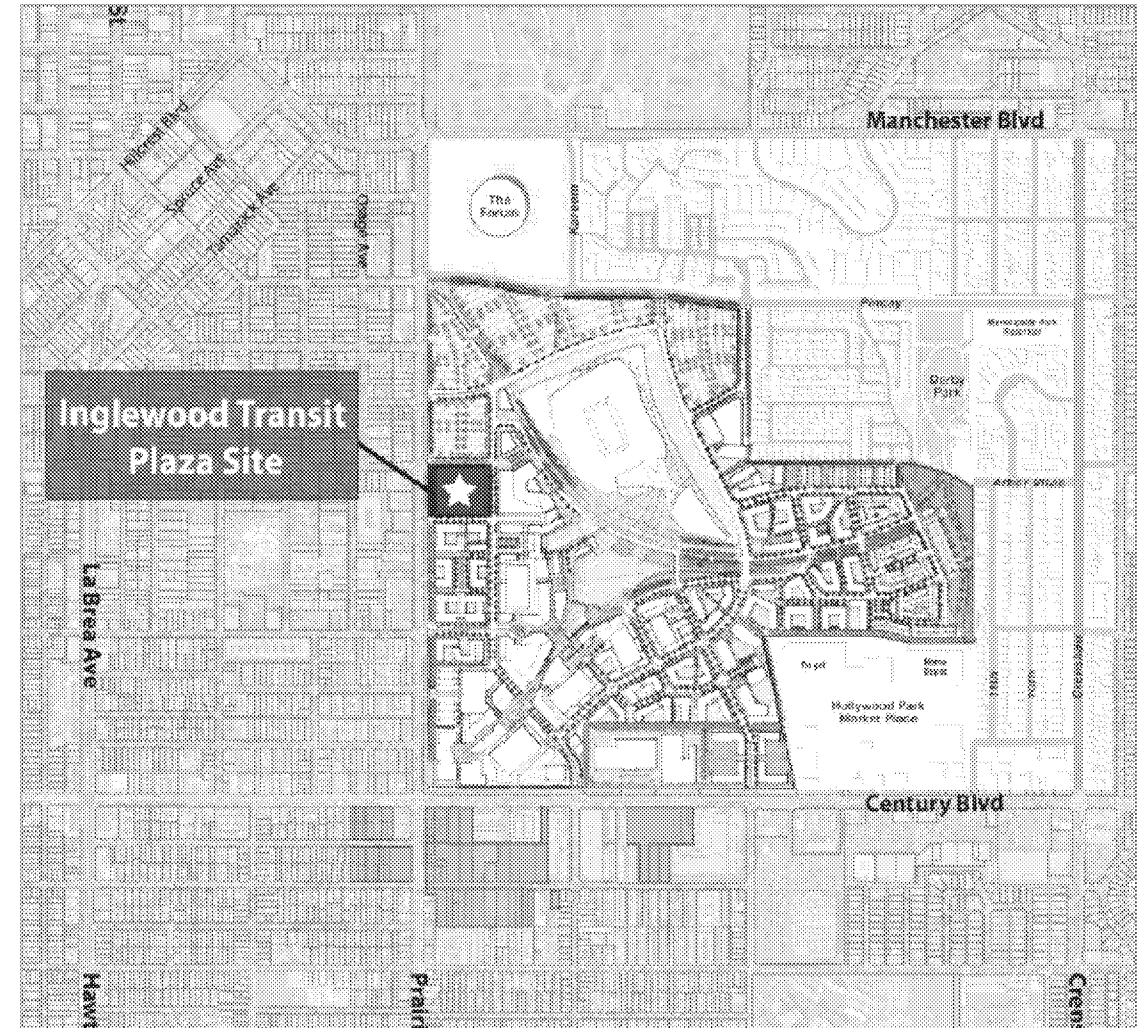


OF STADIUM EVENT INFO
CALL 323/311-1592

Transportation Management and Operations Plan

Major TMOP Efforts Underway

- ✓ Developing a new Intermodal Transit Plaza
- ✓ Expanding preferential parking and neighborhood protection plan
- ✓ Creating new parking and ride program for game days
- ✓ Integrating control center with Stadium Ops Center
- ✓ Designating pick-up/drop-off areas for Uber & Lyft
- ✓ Updating traffic signalization
- ✓ Optimizing event intersection operations
- ✓ Implementing New signage



Offsite Parking Shuttles will access Transit Plaza for NFL Game Days and Events

Neighborhood Protection Plan

The City is developing a set of traffic control management strategies and policy regulations to safeguard from existing and future events in the City. Plan may include improvements such as:

- Policies to protect the community against lack of cleanliness/sanitation (public urination, trash), safety/crime (vandalism, theft), and disruption/noise
- Expansion of existing residential permit parking districts
- Reconfiguration of streets or directional orientation before and after events
- Two stations within 2 miles of NFL Stadium; Downtown Inglewood, and Fairview Heights Station
- Widespread deployment of traffic control officers
- Other potential traffic control strategies



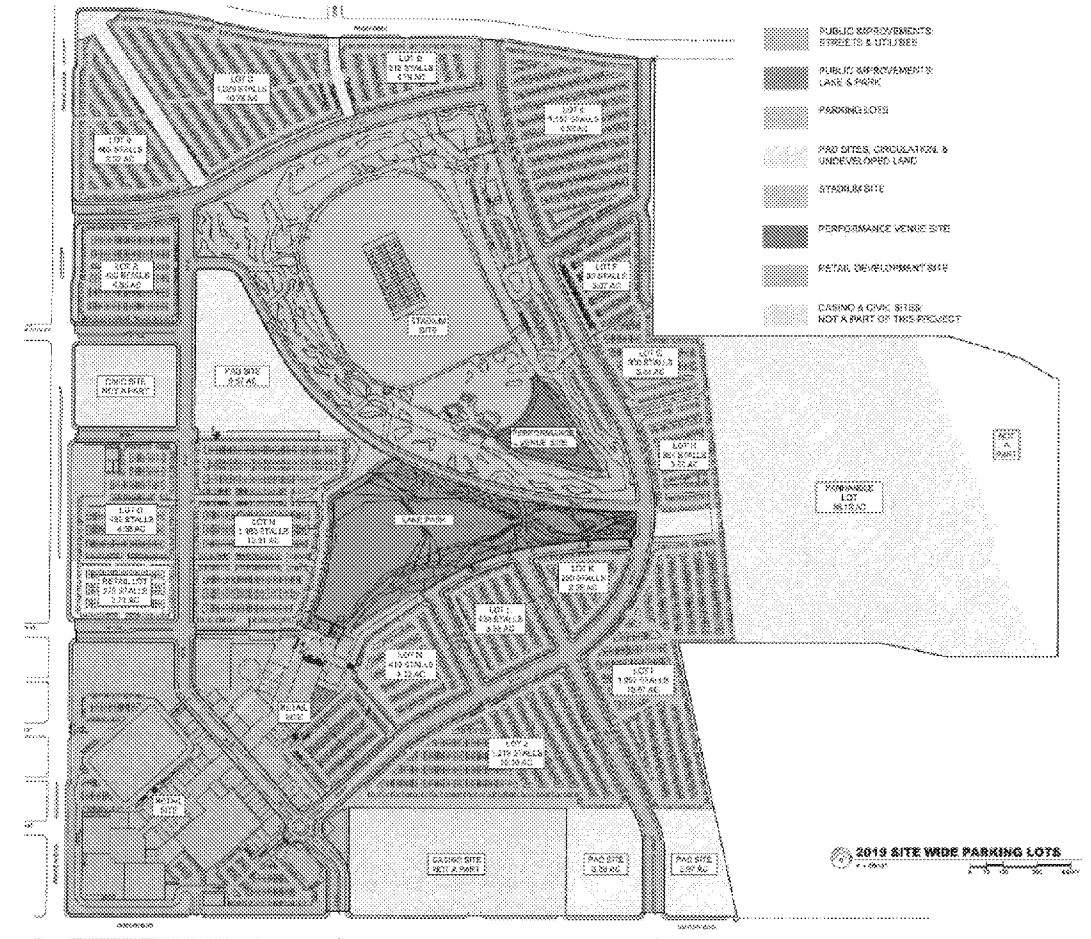
Neighborhood Protection Plan: Residential Permit Parking Program

	How does the parking program work today (2019)?	Parking program updates under consideration for the future:
Application Process	<p>Visit Parking & Enterprise Office in person and provide:</p> <ol style="list-style-type: none"> 1. Proof of residency (rental agreement, light/gas bill) 2. Current drivers' licenses, vehicle registration, and insurance <p><i>Note: Permits are not tied to vehicle license plate.</i></p>	<p>Apply in-person at the Parking & Enterprise Office and Online</p> <ol style="list-style-type: none"> 1. Proof of residency (rental agreement, light/gas bill) 2. Current drivers' licenses, vehicle registration, and insurance <p><i>Note: Permits will be tied to vehicle license plate. Vehicle address must match the resident's address.</i></p>
Cost & Fees	<ul style="list-style-type: none"> • Cost of each permit is \$5.00 • Each residential address can purchase up to (4) permits 	Under consideration for charging some increased amount for Permits 3 and 4 to ensure greater enforcement.
Enforcement	Ticket	Strict Ticket and Tow Policy

Parking: On-site and Off-Site Parking

Stadium will have a limited pre-sold onsite parking

- City released Request for Proposals for program in 2019 and will award contract at City Council meeting on December 10, 2019
- Convenient and Easy-to-Use System will allow attendees to pre-book parking and shuttle via mobile app
- Parking to be located at off-site lots, including City lots, parking lot at South Los Angeles Community College and other lots in the various lots to the West and South
- City will utilize clean fleet shuttles and buses consistent with future AQMD and CARB regulations.



TMOP Remote Parking/Shuttle Program Goals

To address stadium's limited pre-sold onsite parking, the City proactively established a remote parking and shuttle program that will:

- Support an effective and comprehensive access, circulation and traffic management plan for NFL Game and Major Event days.
- Ease traffic congestion in City and surrounding areas on NFL Game and Major Event days.
- Offer clean, safe and reliable remote parking and shuttle operations.
- Ensure flexibility to accommodate additional major events occurring at LASED venues and meet varying demand.
- Minimize financial risk to City and develop a self-sustaining program.
- Support pedestrian activity around local businesses on NFL Game and Major Event days

Procurement Overview

- January 2019 - The City released a Request for Proposals (RFP) seeking a private partner to manage and operate a remote parking and shuttle program.

- April 2019 - **LAZ Parking California, LLC**, was selected for further negotiations.
 - ✓ Second largest parking company in the US, with broad experience in the industry.
 - ✓ Manages over \$1.4 billion of revenue on behalf of its clients annually and over 1,025,000 parking spaces.
 - ✓ Event Management Service that specializes in all aspects of parking, transportation, and support services for major sporting and entertainment venues throughout the county.



LAZ Scope of Services

- Management and operation of Program Parking Lots, shuttle services and Intermodal Transit Facility (“ITF”) on NFL Game Days, including coordination of arrival (drop-off) and departure (pick-up) of event patrons.
- Procurement of shuttles and additional parking lots to meet demand, if directed by the City.
- Development, maintenance and operation of an online parking payment/reservation system.
- Coordination of public messaging, outreach, and marketing services to appropriately and successfully publicize and promote the Program.
- Administer a third-party access fee program for the Intermodal Transit Facility on behalf of the City.



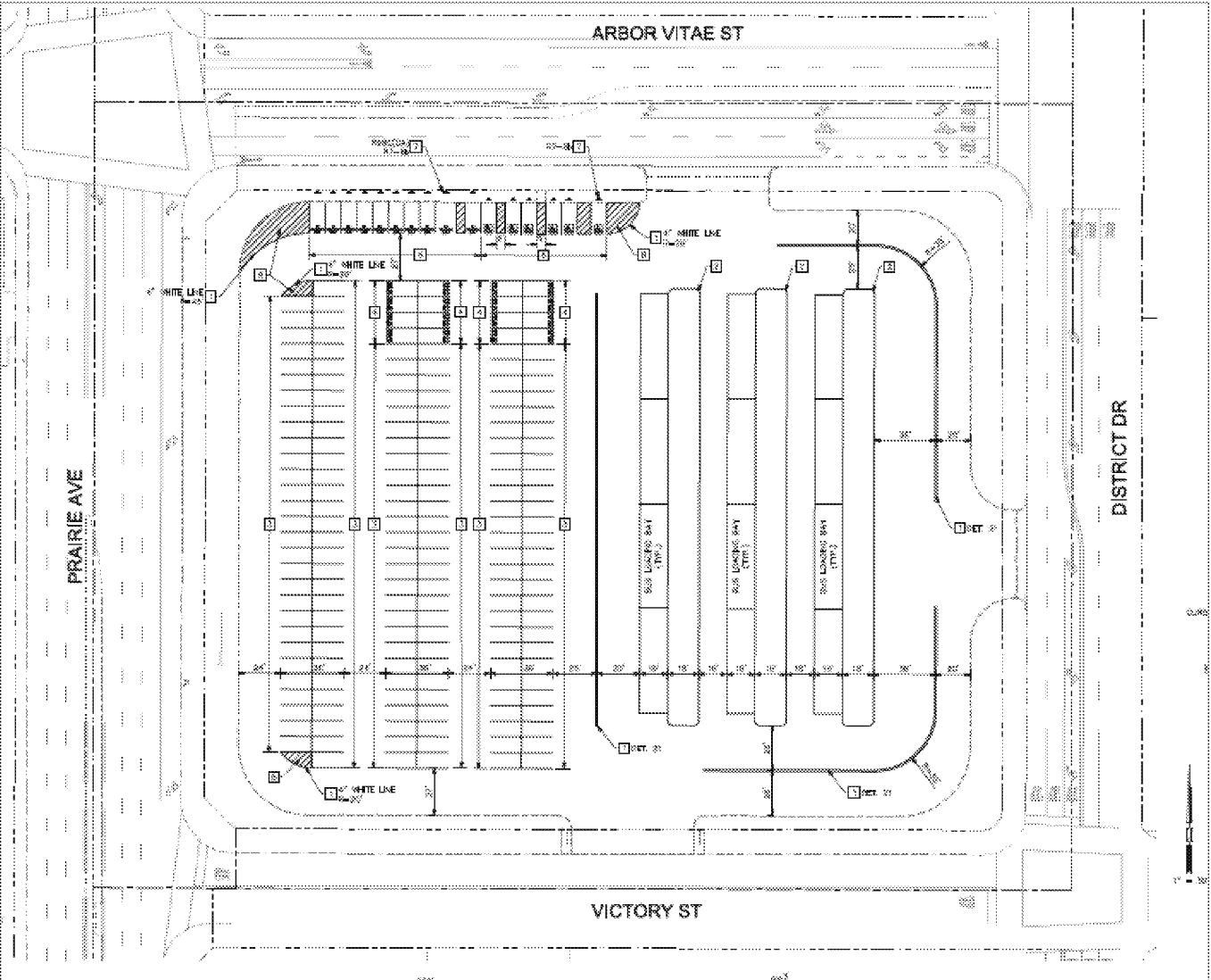
Service Tiers and Parking Inventory

Service Tier	Location Name	Address	City	Spaces
1	Civic Center Garage	1 Manchester Blvd	Inglewood	352
	Locust Street Garage	115 South Locust St	Inglewood	300
	Senior Center Garage	333 East Queen St	Inglewood	151
	101 W. Manchester	101 W. Manchester	Inglewood	185
Tier 1 Total				988
2	Southwest College	1600 W Imperial Hwy	Gardena	1580
Tier 2 Total				1580
3	El Camino College	16007 Crenshaw Blvd	Torrance	4071
	Playa District	6060,6080,6100 Center Dr	Los Angeles	2709
	Wateridge Office Park	5035 W Slauon Ave	Los Angeles	2077
	Pacific Concourse	5220,5230 Pacific Concourse Dr	Los Angeles	800
	5200 W Century Garage	10139 La Cienaga Blvd	Los Angeles	1959
	AT&T Building	2222 W Imperial	Los Angeles	1512
Tier 3 Total*				13,128
TOTAL, ALL TIERS				15,696

* Tier 3 can be larger; LAZ can solicit additional lots to participate in the Program.



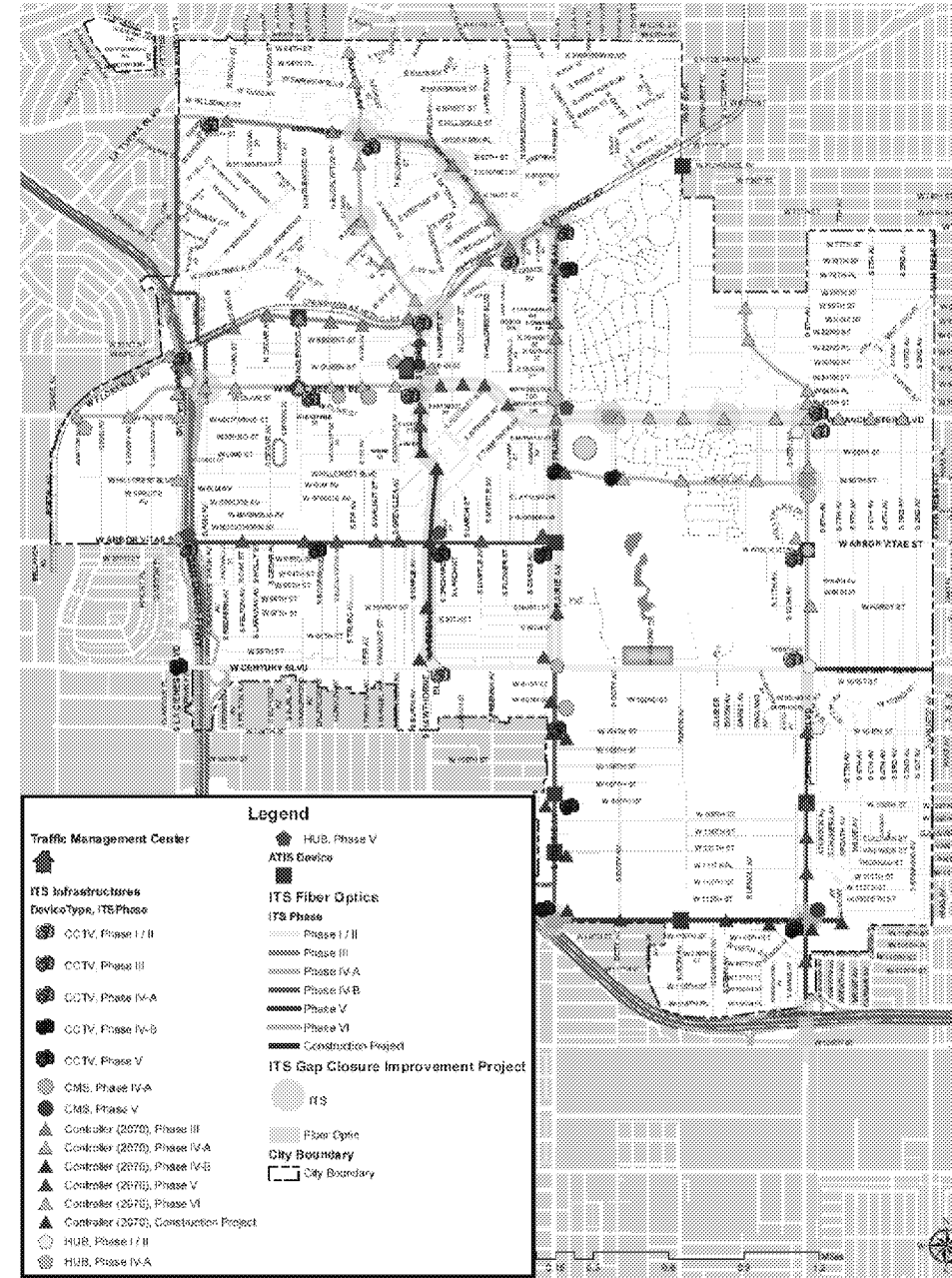
Inglewood Intermodal Transit/Park and Ride Facility



Traffic Circulation Management Plans and Intelligent Transportation System (ITS)

The City is working to implement technologies and traffic circulation plans to increase the capacity of existing transportation systems

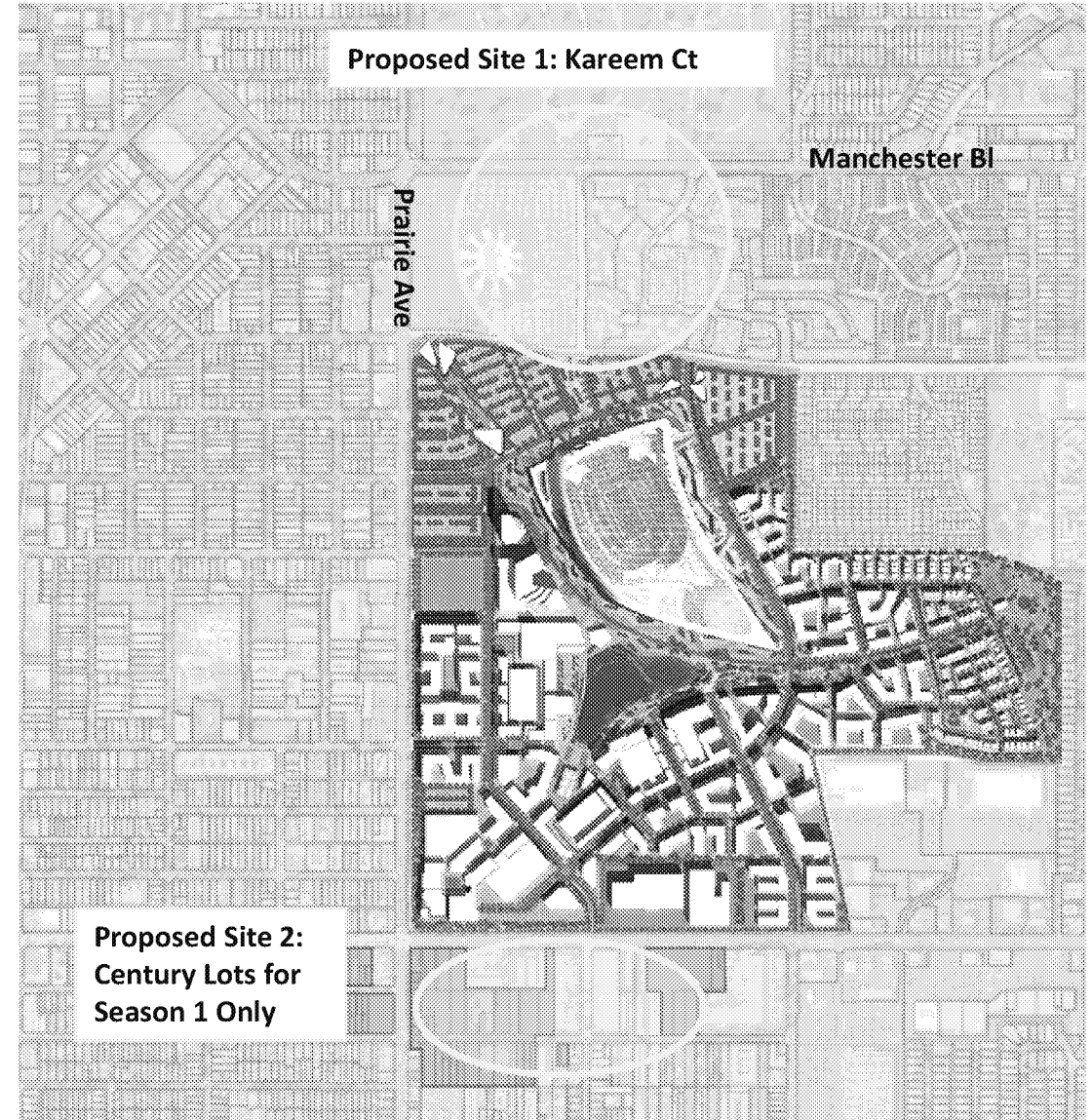
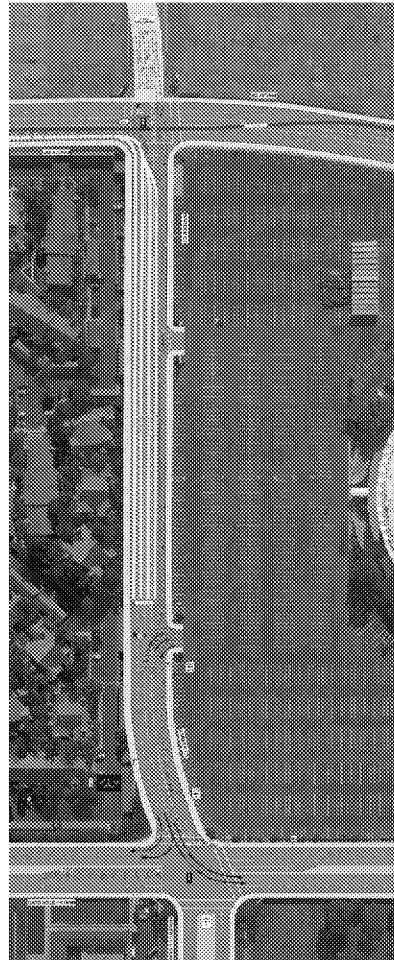
- Traffic signal upgrades
- Ramp metering
- Local arterial changeable message signs
- Vehicle detection systems
- Traffic Circulation Routes
 - Routes that do not intrude neighborhood streets
- Traffic Controls
- City is exploring transit only lane and reversible lanes to support event day traffic circulation



Taxi/Transportation Network Companies (TNCs)

The City is working with Taxis and TNCs (Uber and Lyft) to:

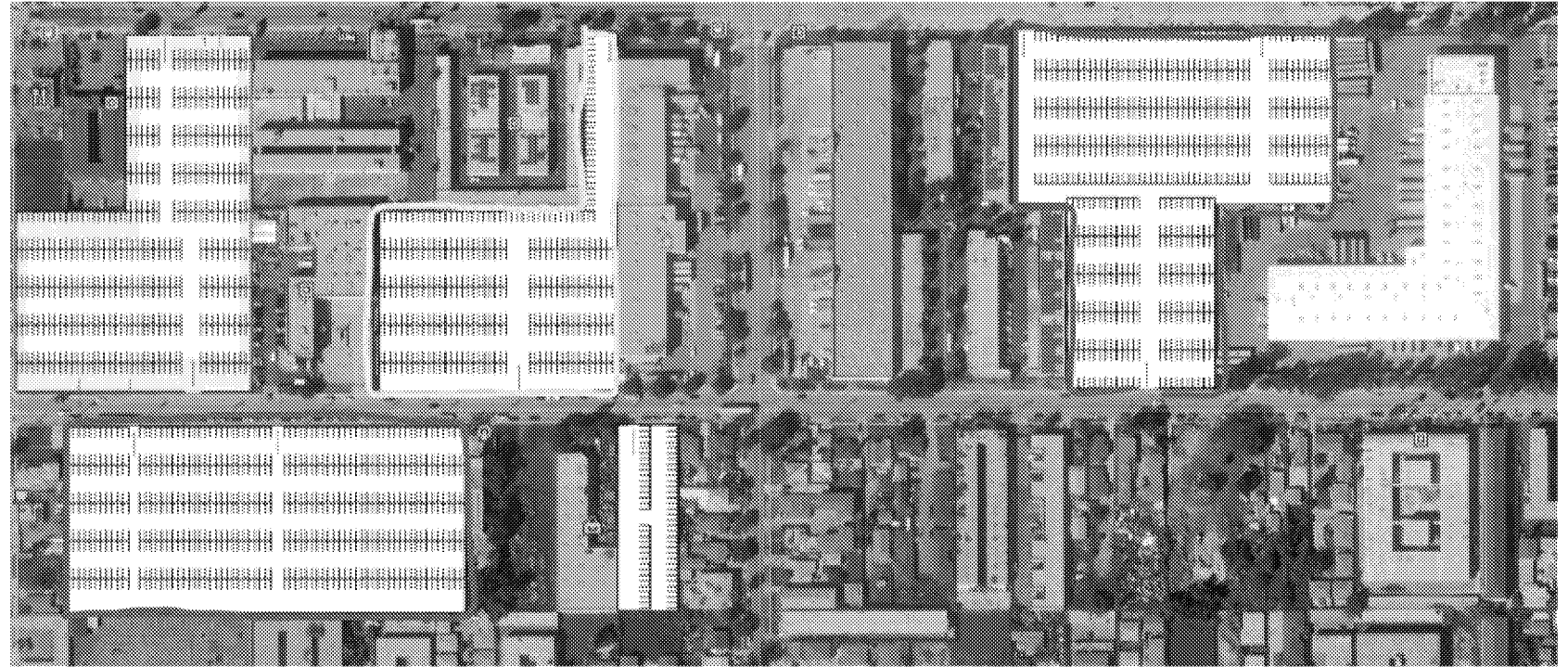
- Explore multiple locations for dedicated Taxi and TNC drop-off and pick-up locations
- Ensure that locations are safe, convenient and efficient.
- Create a positive user experience.



Site 1 - Kareem Court Draft Operations Plans

Taxi/Transportation Network Companies (TNCs)

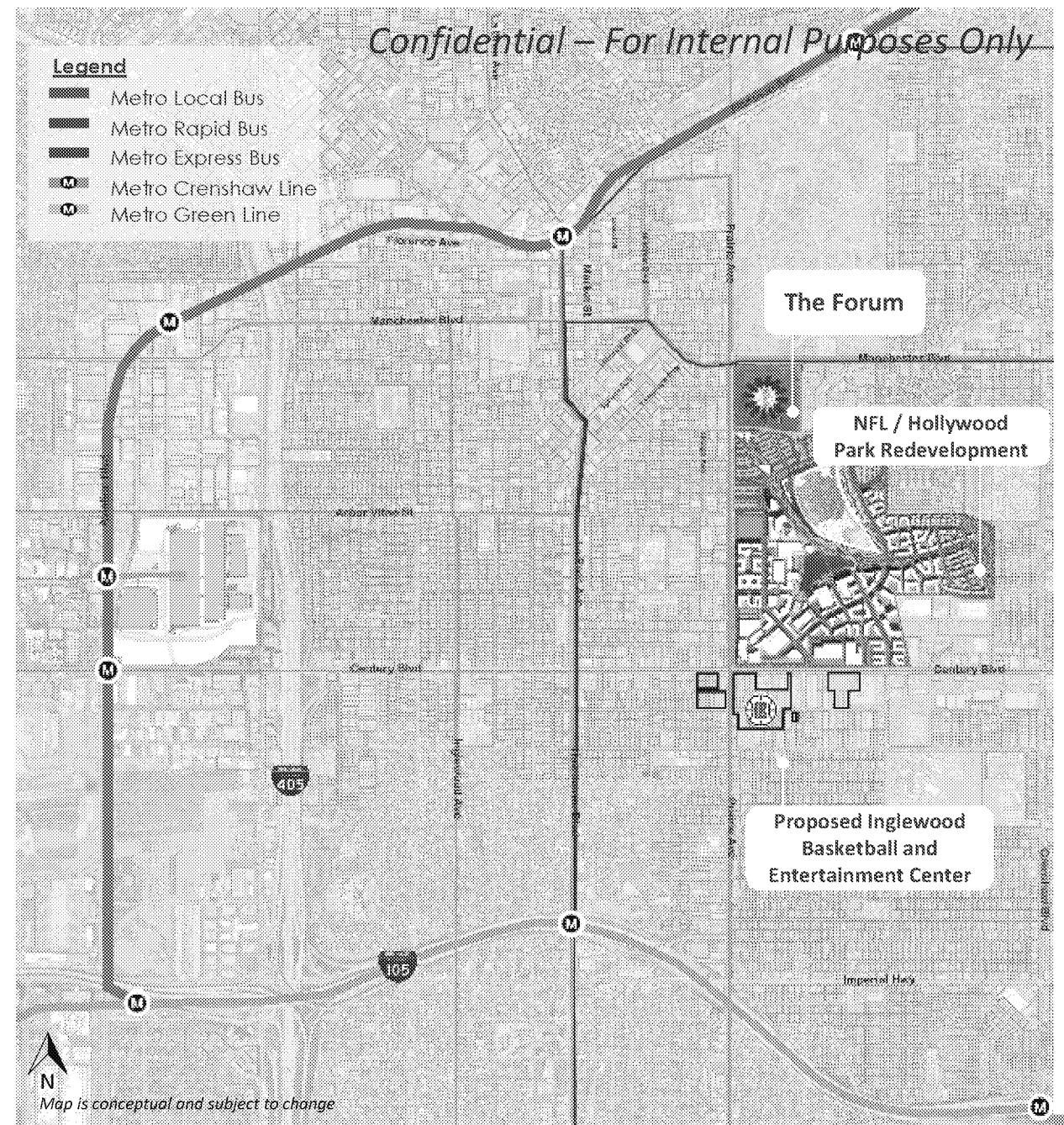
- The City is working with Taxis and TNCs (Uber and Lyft) on plan for South Lots for Season 1 Only
- City is still developing operational concepts for secondary TNC lots



Site 2 – South Lots on Century for NFL Season 1 Only

Lack of Direct Mass Transit to City of Inglewood

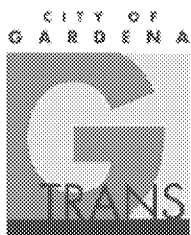
- Existing transit network is not equipped to handle the increased capacity resulting from new activity centers
 - Only Lines 211/215, 212/213, and 177 currently provide direct service
 - Limited service on weekends with 25min headways and no service after 7pm.



Promote the Use of Public Transportation: Bus

The City is actively working to increase transit services to City by

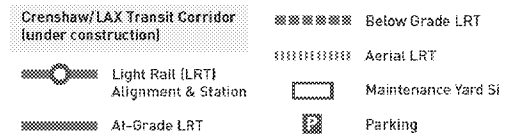
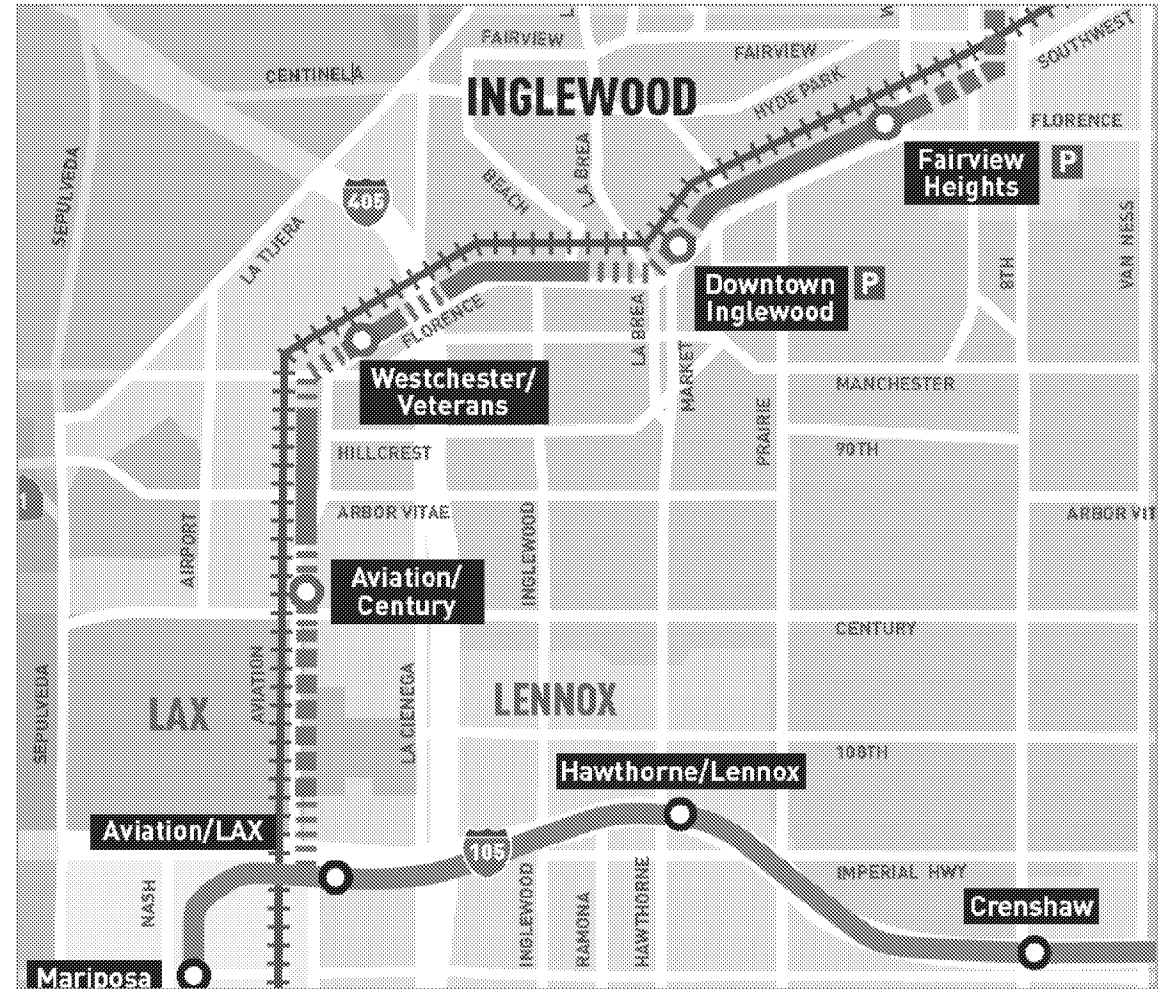
- Coordinating with regional and local transportation agencies to increase public transportation services
- Developing a Stadium Transit Plaza
- Big Blue Bus has committed extending Line 14 from Playa Vista to Inglewood
- GTrans actively working with the City to expand service for event days within the next 2-3 years



Promote the Use of Public Transportation: Rail

The TMOP will include efforts to promote and increase the use of public transportation

- Metro Green Line
- Metro Crenshaw/LAX Line (under construction)
 - Projected to open in 2020
 - Two stations within 2 miles of NFL Stadium; Downtown Inglewood, and Fairview Heights Station
- City is requesting Metro to provide shuttle service within the vicinity of the NFL Stadium





THANK YOU