



**DEVELOPER**

**MURPHY'S BOWL LLC**  
19400 I/E 4th St, Suite 3000  
Bellevue, WA 98004

**DEVELOPER'S MANAGING AGENT**

**WILSON MEANY**  
6701 Center Drive, Suite 550  
Los Angeles, CA 90045  
310.333.8000 ext  
http://wilsonmeany.com

**ARCHITECT / PLANNING / ENGINEERING / TRANSPORTATION**

**AECOM**  
AECOM TECHNICAL SERVICES, INC.  
2360 McGee, Suite 200  
Kansas City, MO 64108  
816.561.4443 tel 816.991.2693 fax  
www.aecom.com

**CIVIL ENGINEER**

**D&D ENGINEERING, INC**  
8901 S. La Compa Blvd, Suite 106  
Inglewood, CA 90331  
424.951.6800 tel

**DRY UTILITY SYSTEMS**

**BJ PALMER & ASSOCIATES, INC**  
23245 Grover Avenue  
Valencia, CA 91355  
760.842.7910 tel

**PARKING**

**WALKER CONSULTANTS**  
608 S. Olive St, Suite 1100  
Los Angeles, CA 90014  
213.458.4811 tel

**SHORING ENGINEER**

**DRS ENGINEERING, INC**  
3564 Sagunto Street, Suite 408  
Santa Ana, CA 92704  
916.402.3902 tel

**REGISTRATION**

This drawing has been prepared for the use of AECOM's client and may not be used, reproduced or relied upon by third parties, except as agreed by AECOM and its client, as required by law or for use by governmental reviewing agencies. AECOM accepts no responsibility, and denies any liability whatsoever, to any party that modifies this drawing without AECOM's express written consent. Do not scale this document. All measurements must be obtained from the stated dimensions.

**NOT FOR CONSTRUCTION**

**ISSUE/REVISION**

IR	DATE	DESCRIPTION
SEP 14, 2018	ER DOCUMENTS	

**KEY PLAN**

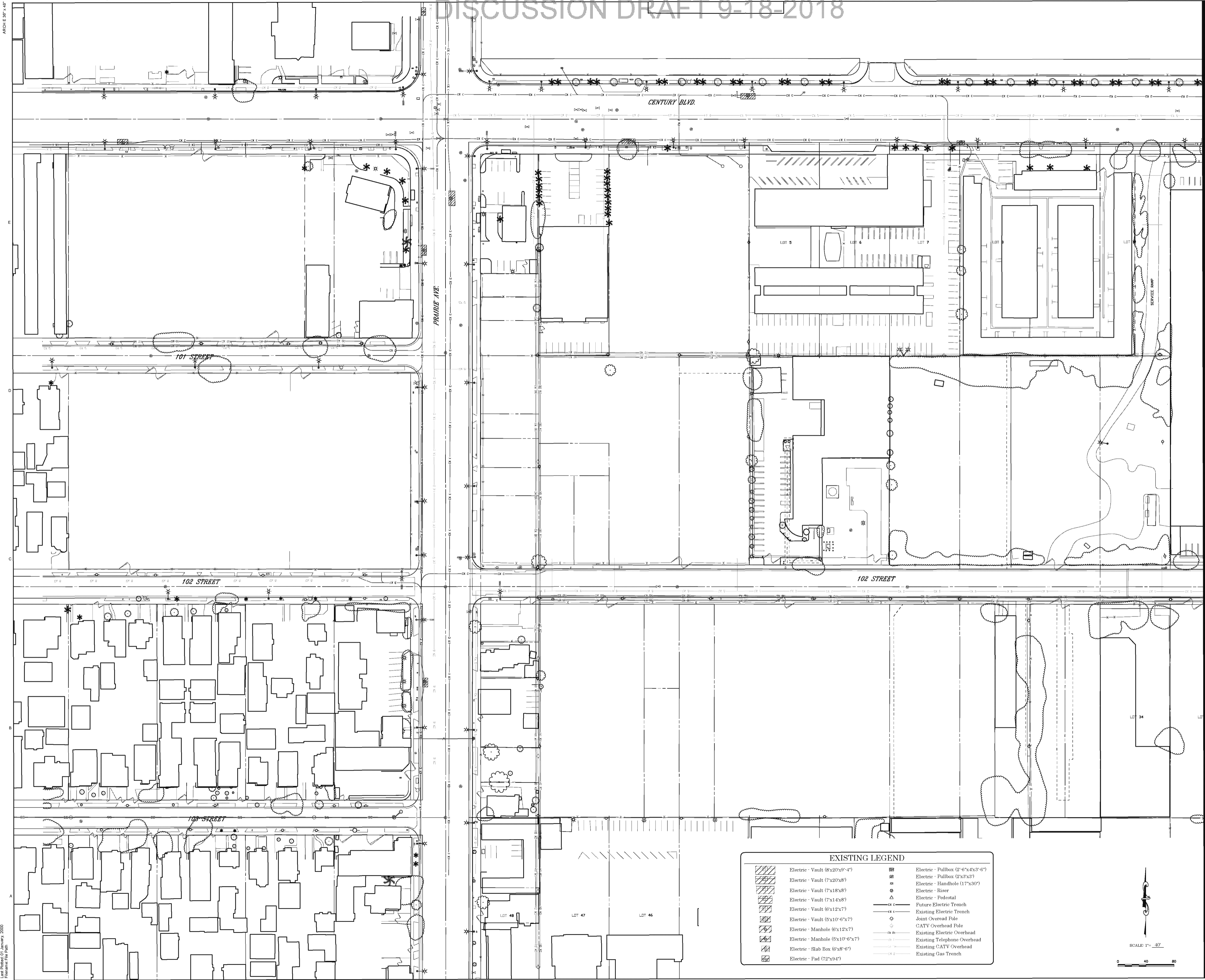


**PROJECT NUMBER**  
60545923

**SHEET TITLE**  
EXISTING DRY UTILITIES

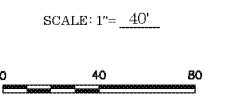
**SHEET NUMBER**

**CD-100A**



**EXISTING LEGEND**

	Electric - Vault (8x20x9'-4")		Electric - Pullbox (2'-6"x4x3'-0")
	Electric - Vault (7x20x8")		Electric - Pullbox (2'x3'x3")
	Electric - Vault (7x18x8")		Electric - Handhole (17'x30")
	Electric - Vault (7x14x8")		Electric - Riser
	Electric - Vault (6'x12x7")		Electric - Pedestal
	Electric - Vault (5'x10'-6"x7')		Future Electric Trench
	Electric - Manhole (6'x12x7')		Existing Electric Trench
	Electric - Manhole (5'x10'-6"x7')		Joint Overhead Pole
	Electric - Slab Box (6'x8'-6")		CATV Overhead Pole
	Electric - Pad (72'x9'4")		Existing Electric Overhead
			Existing Telephone Overhead
			Existing CATV Overhead
			Existing Gas Trench



Project Management Initials: Approved: AFR  
 Designer: DSC  
 Checker: JAC  
 File Name: File Path



REGISTRATION

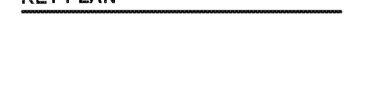
This drawing has been prepared for the use of AECOM's client and may not be used, reproduced or relied upon by third parties, except as agreed by AECOM and its client, as required by law or for use by governmental reviewing agencies. AECOM accepts no responsibility, and denies any liability whatsoever, to any party that modifies this drawing without AECOM's express written consent. Do not scale this document. All measurements must be obtained from the stated dimensions.

NOT FOR  
CONSTRUCTION

ISSUE/REVISION

NO.	DATE	DESCRIPTION
1	SEP 14, 2018	ER DOCUMENTS

KEY PLAN

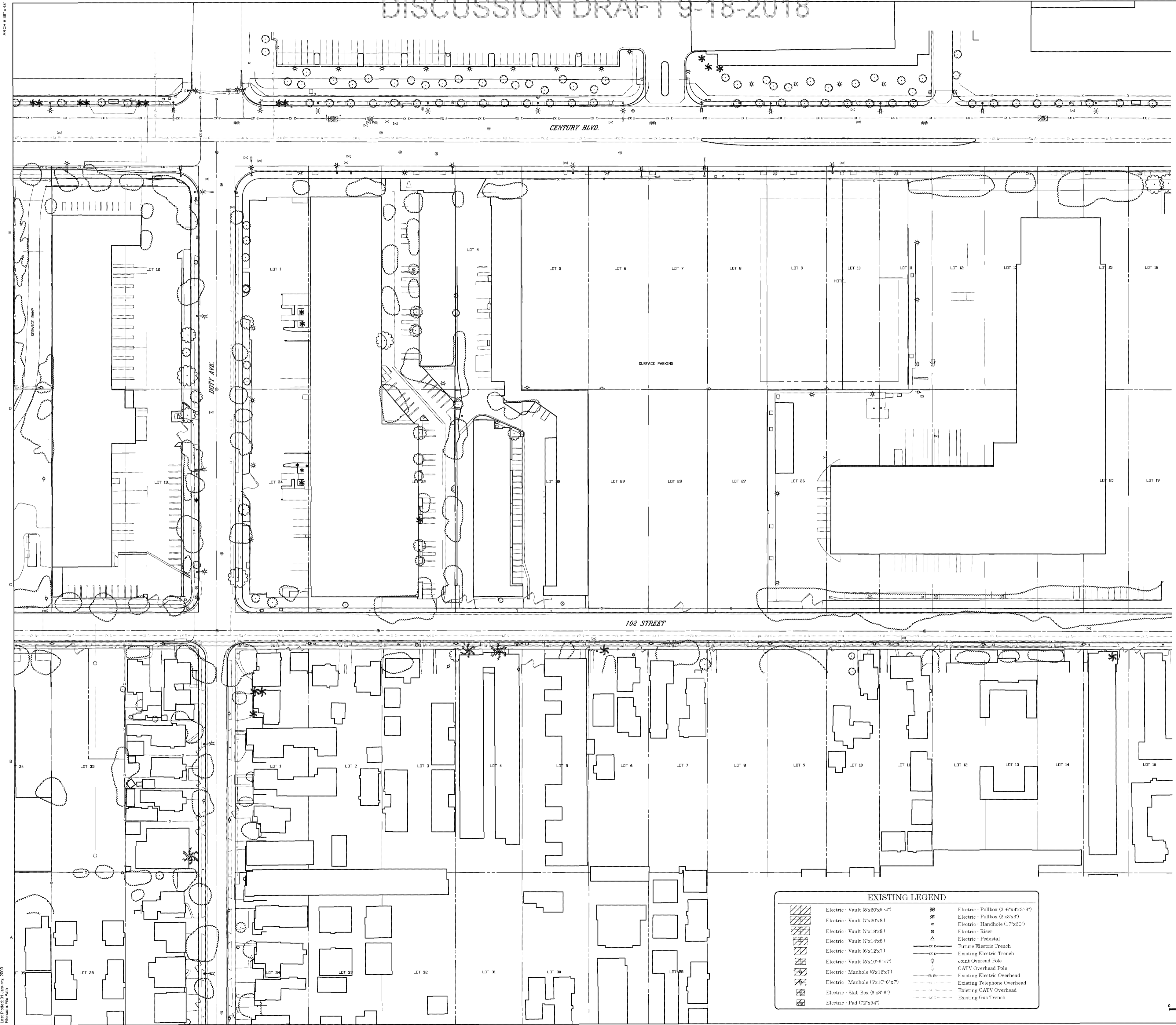


PROJECT NUMBER  
60545923

SHEET TITLE  
EXISTING DRY UTILITIES

SHEET NUMBER

**CD-101A**



**EXISTING LEGEND**

	Electric - Vault (8x20x9'-4")		Electric - Pullbox (2'-6"x4'x3'-6")
	Electric - Vault (7x20x8)		Electric - Pullbox (2'x3'x3")
	Electric - Vault (7x18x8)		Electric - Handhole (17"x30")
	Electric - Vault (7x14x8)		Electric - Busbar
	Electric - Vault (6'x12'x7)		Electric - Pedestal
	Electric - Vault (5'x10'-6"x7)		Future Electric Trench
	Electric - Manhole (6'x12'x7)		Existing Electric Trench
	Electric - Manhole (5'x10'-6"x7)		Joint Overhead Pole
	Electric - Slab Box (6'x8'-6")		CATV Overhead Pole
	Electric - Pad (72"x9'4")		Existing Electric Overhead
			Existing Telephone Overhead
			Existing CATV Overhead
			Existing Gas Trench

SCALE: 1" = 40'



**DEVELOPER**

MURPHY'S BOWL  
LLC  
19400 E 4TH ST, SUITE 3000  
BELLEVUE, WA 98004

**DEVELOPER'S MANAGING AGENT**

WILSON MEANY  
4701 Center Drive, Suite 650  
Los Angeles, CA 90045  
310.362.6000 tel  
http://wilsonmeany.com

**ARCHITECT / PLANNING /  
ENGINEERING / TRANSPORTATION**

**AECOM**

AECOM TECHNICAL SERVICES, INC.  
2380 McGee, Suite 200  
Kansas City, MO 64108  
816.881.4403 tel 816.991.2693 fax  
www.aecom.com

**CIVIL ENGINEER**

D&D  
ENGINEERING, INC  
8901 S. La Cienega Blvd, Suite 106  
Inglewood, CA 90304  
424.393.4122 tel

**DRY UTILITY SYSTEMS**

BJ PALMER &  
ASSOCIATES, INC  
28245 Crocker Avenue  
Van Nuys, CA 91410  
760.942.7510 tel

**PARKING**

WALKER  
CONSULTANTS  
608 S. Olive St, Suite 1100  
Los Angeles, CA 90014  
213.483.8811 tel

**SHORING ENGINEER**

DRS  
ENGINEERING, INC  
3564 Sagunto Street, Suite 488  
Santa Ynez, CA 93460  
818.462.3982 tel

**REGISTRATION**

This drawing has been prepared for the use of AECOM's client and may not be used, reproduced or relied upon by third parties, except as agreed by AECOM and its client, as required by law or for use by governmental reviewing agencies. AECOM accepts no responsibility, and denies any liability whatsoever, to any party that modifies this drawing without AECOM's express written consent. Do not scale this document. All measurements must be obtained from the stated dimensions.

**NOT FOR  
CONSTRUCTION**

**ISSUE/REVISION**

NO.	DATE	DESCRIPTION

**KEY PLAN**

SEP 14, 2018	EIR DOCUMENTS

**PROJECT NUMBER**

60545923

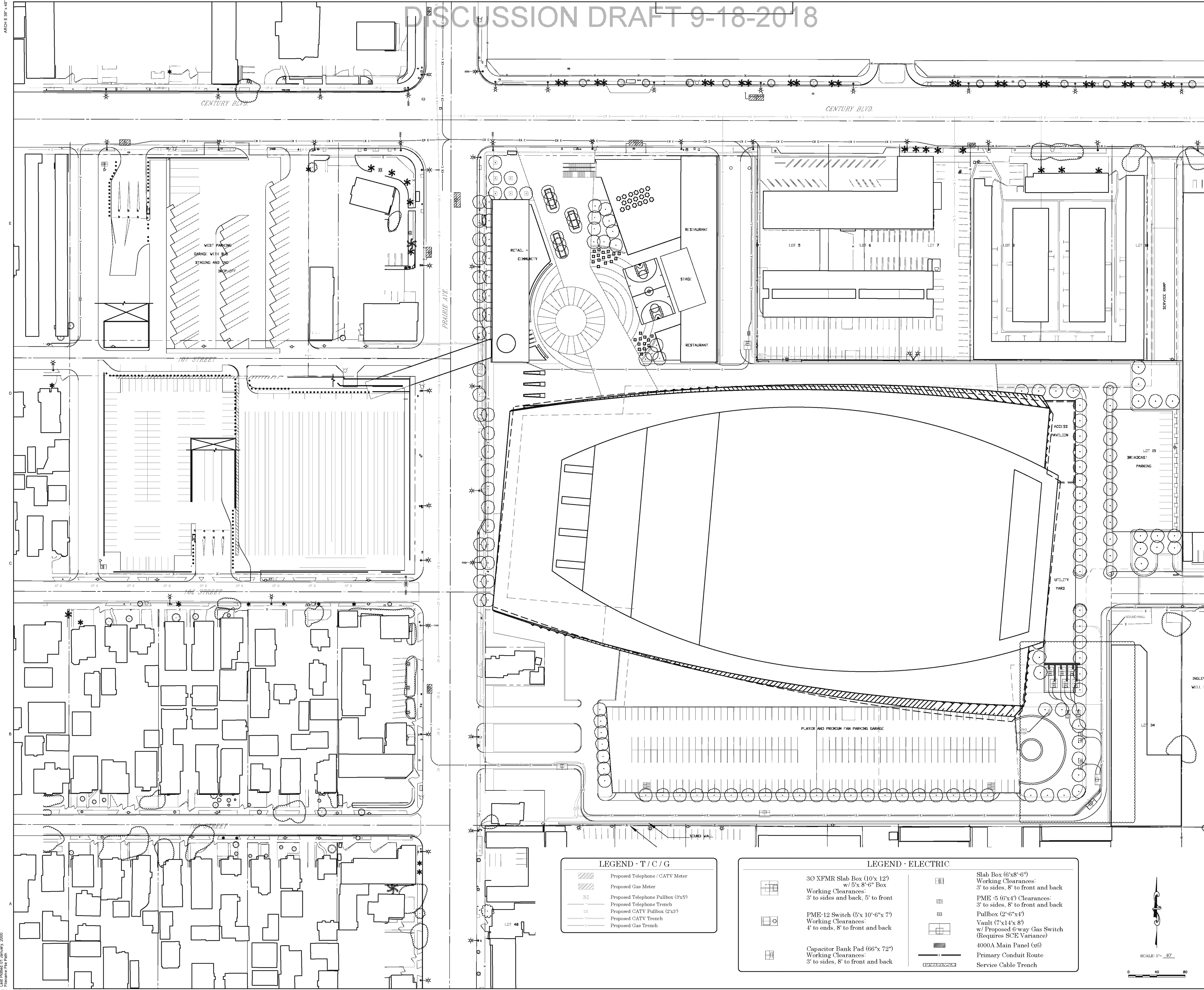
**SHEET TITLE**

PROPOSED DRY UTILITIES

**SHEET NUMBER**

CD-102A

© 2018 AECOM TECHNICAL SERVICES, INC.

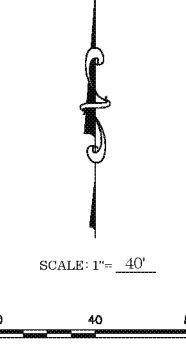


**LEGEND - T / C / G**

	Proposed Telephone / CATV Meter
	Proposed Gas Meter
	Proposed Telephone Pullbox (3'x5')
	Proposed Telephone Trench
	Proposed CATV Pullbox (2'x3')
	Proposed CATV Trench
	Proposed Gas Trench

**LEGEND - ELECTRIC**

	30 XFMR Slab Box (10'x12') w/ 5'x 8'-6" Box Working Clearances: 3' to sides, 8' to front and back
	PME-12 Switch (5'x 10'-6" x 7') Working Clearances: 4' to ends, 8' to front and back
	Capacitor Bank Pad (66" x 72") Working Clearances: 3' to sides, 8' to front and back
	Slab Box (6'x8'-6") Working Clearances: 3' to sides, 8' to front and back
	PME-5 (6'x4') Clearances: 3' to sides, 8' to front and back
	Pullbox (2'-6" x 4')
	Vault (7'x14' x 8') w/ Proposed 6-way Gas Switch (Requires SCE Variance)
	4000A Main Panel (x6)
	Primary Conduit Route
	Service Cable Trench



Project Management Initials: CHK  
 Date: 09/18/2018  
 User: [redacted]  
 File Name: [redacted]  
 Approved: APR  
 Recycled Content Paper

# DISCUSSION DRAFT 9-18-2018

**AECOM**

PROJECT  
PROJECT CONDOR,  
INGLEWOOD CALIFORNIA



**DEVELOPER**

**MURPHY'S BOWL  
LLC**  
19400 HE 4TH ST, SUITE 3000  
BELLEVUE, WA 98004

**DEVELOPER'S MANAGING AGENT**

**WILSON MEANY**  
6701 Center Drive, Suite 550  
Los Angeles, CA 90045  
310.382.8001 tel  
http://wilsonmeany.com/

**ARCHITECT / PLANNING /  
ENGINEERING / TRANSPORTATION**

**AECOM**

AECOM TECHNICAL SERVICES, INC.  
2350 McGee, Suite 200  
Kansas City, MO 64108  
816.561.4443 tel 816.991.2653 fax  
www.aecom.com

**CIVIL ENGINEER**

**D&D  
ENGINEERING, INC**  
8901 S. La Compa Blvd, Suite 106  
Inglewood, CA 90331  
494.393.4122 tel

**DRY UTILITY SYSTEMS**

**BJ PALMER &  
ASSOCIATES, INC**  
23245 Grover Avenue  
Valencia, CA 91355  
760.842.7910 tel

**PARKING**

**WALKER  
CONSULTANTS**  
608 S. Olive St, Suite 1100  
Los Angeles, CA 90014  
213.458.4611 tel

**SHORING ENGINEER**

**DRS  
ENGINEERING, INC**  
3564 Sagunto Street, Suite 408  
Santa Fe, CA 94060  
916.452.3962 tel

**REGISTRATION**

This drawing has been prepared for the use of AECOM's client and may not be used, reproduced or relied upon by third parties, except as agreed by AECOM and its client, as required by law or for use by governmental reviewing agencies. AECOM accepts no responsibility, and denies any liability whatsoever, to any party that modifies this drawing without AECOM's express written consent. Do not scale this document. All measurements must be obtained from the stated dimensions.

**NOT FOR  
CONSTRUCTION**

**ISSUE/REVISION**

NO.	DATE	DESCRIPTION
1	SEP 14, 2018	DIR DOCUMENTS

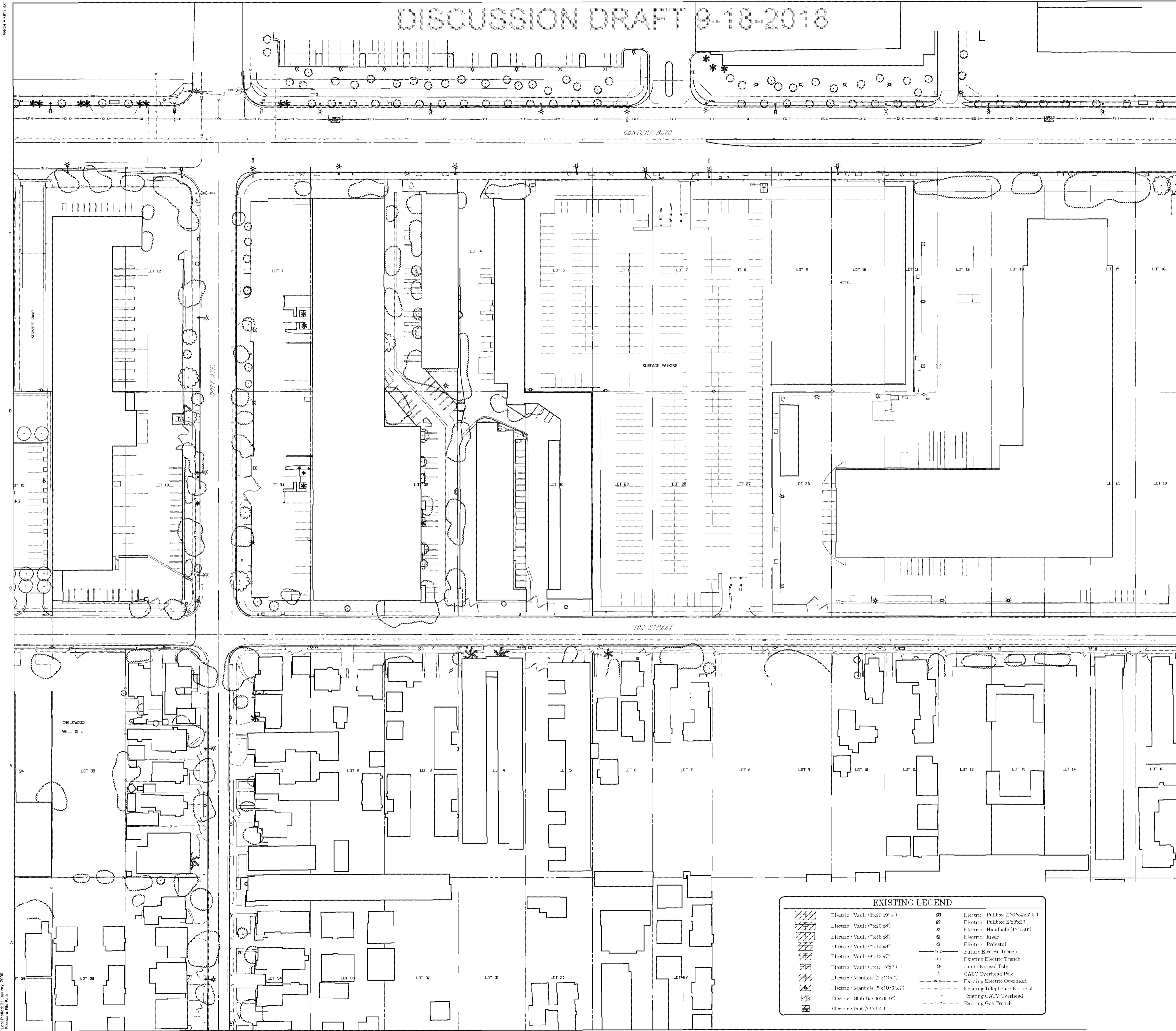
**KEY PLAN**

**PROJECT NUMBER**  
60545923

**SHEET TITLE**  
PROPOSED DRY UTILITIES

**SHEET NUMBER**  
**CD-103A**

© 2015 AECOM TECHNICAL SERVICES, INC.



**EXISTING LEGEND**

	Electric - Vault (8x20x9'-4")		Electric - Pullbox (2'-6"x4x3'-0")
	Electric - Vault (7x20x8")		Electric - Pullbox (2'x3'x3")
	Electric - Vault (7x18x8")		Electric - Handhole (17"x30")
	Electric - Vault (7x14x8")		Electric - Busbar
	Electric - Vault (6'x12x7")		Electric - Pedestal
	Electric - Vault (5'x10'-6"x7")		Future Electric Trench
	Electric - Manhole (6'x12x7")		Existing Electric Trench
	Electric - Manhole (5'x10'-6"x7")		Joint Overhead Pole
	Electric - Slab Box (6'x8'-6")		CATV Overhead Pole
	Electric - Pad (72"x9'4")		Existing Electric Overhead
			Existing Telephone Overhead
			Existing CATV Overhead
			Existing Gas Trench

ARCH: EBP, AEP  
 PROJECT MANAGEMENT: IAH, BIK  
 DESIGNER: CSC, CHK  
 CHECKER: CSC, CHK  
 FILENAME: File Path  
 APPROVED: AFR  
 PRINTED ON: Plot Converter  
 PROJECT: Condor