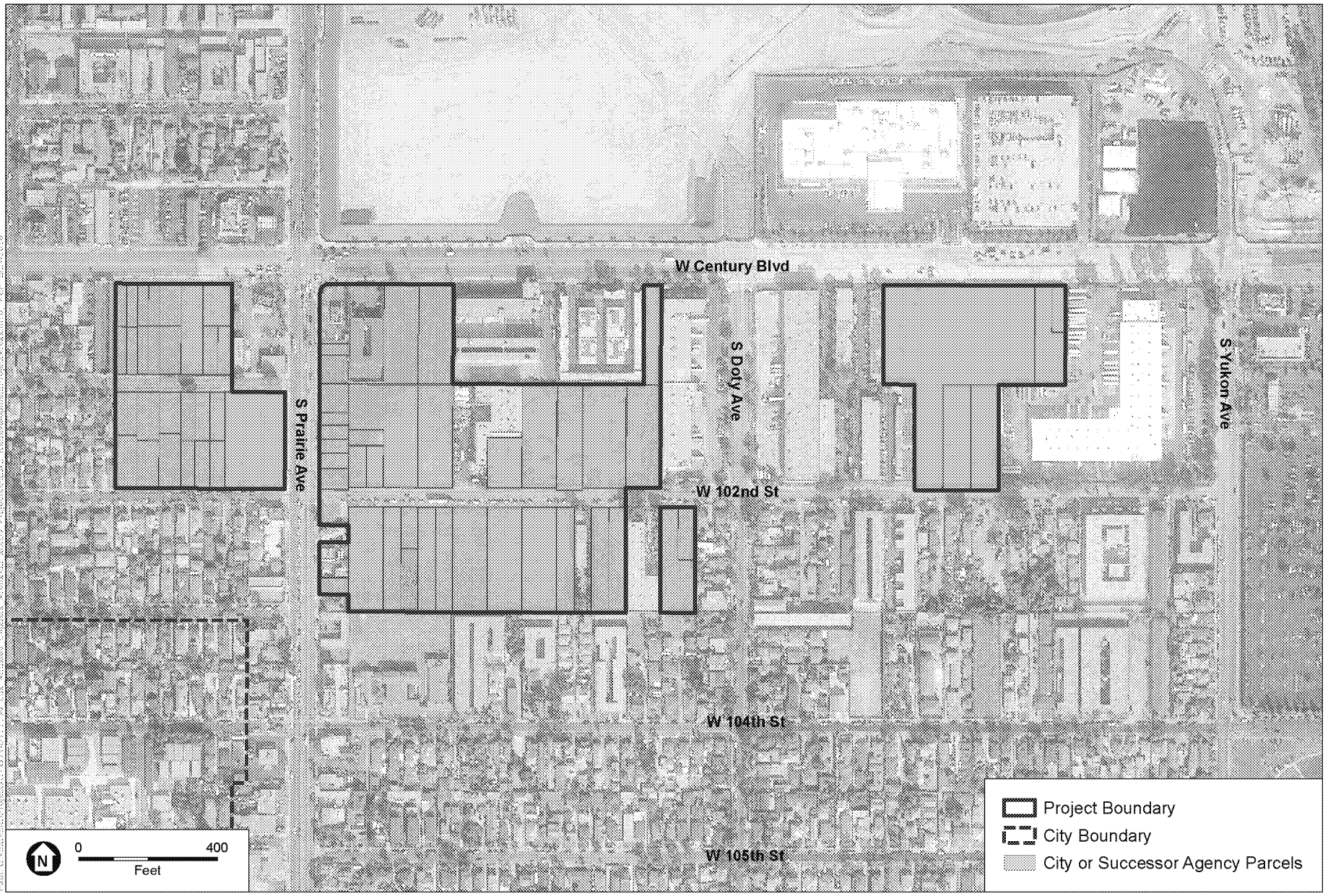


SOURCE: TerraServer, 2018; ESA, 2018

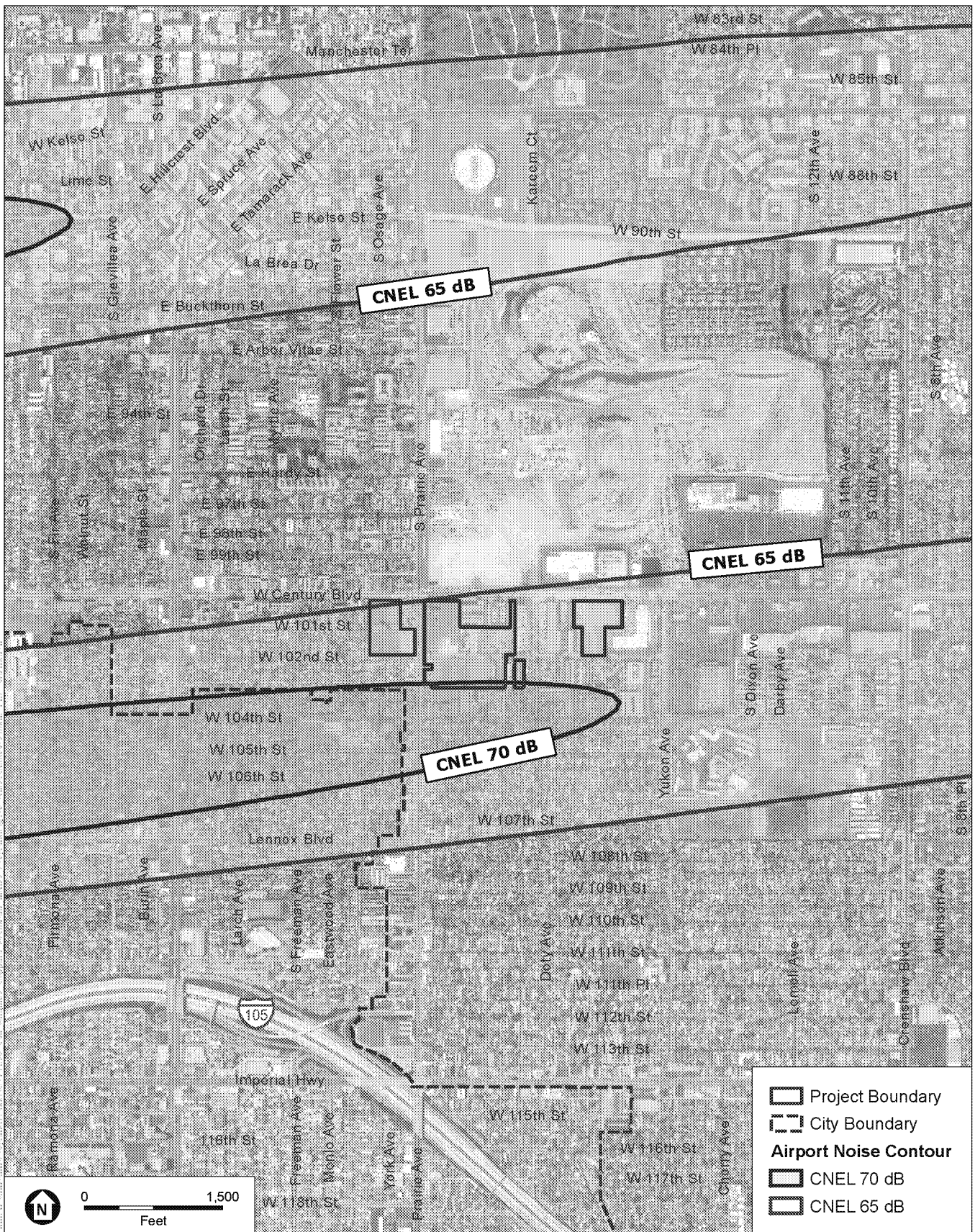
Inglewood Basketball and Entertainment Center

Figure 2-2
Project Site



SOURCE: TerraServer, 2018; City of Inglewood, 2017; ESA, 2018

Inglewood Basketball and Entertainment Center
Figure 2-3
City or Successor Agency Parcels

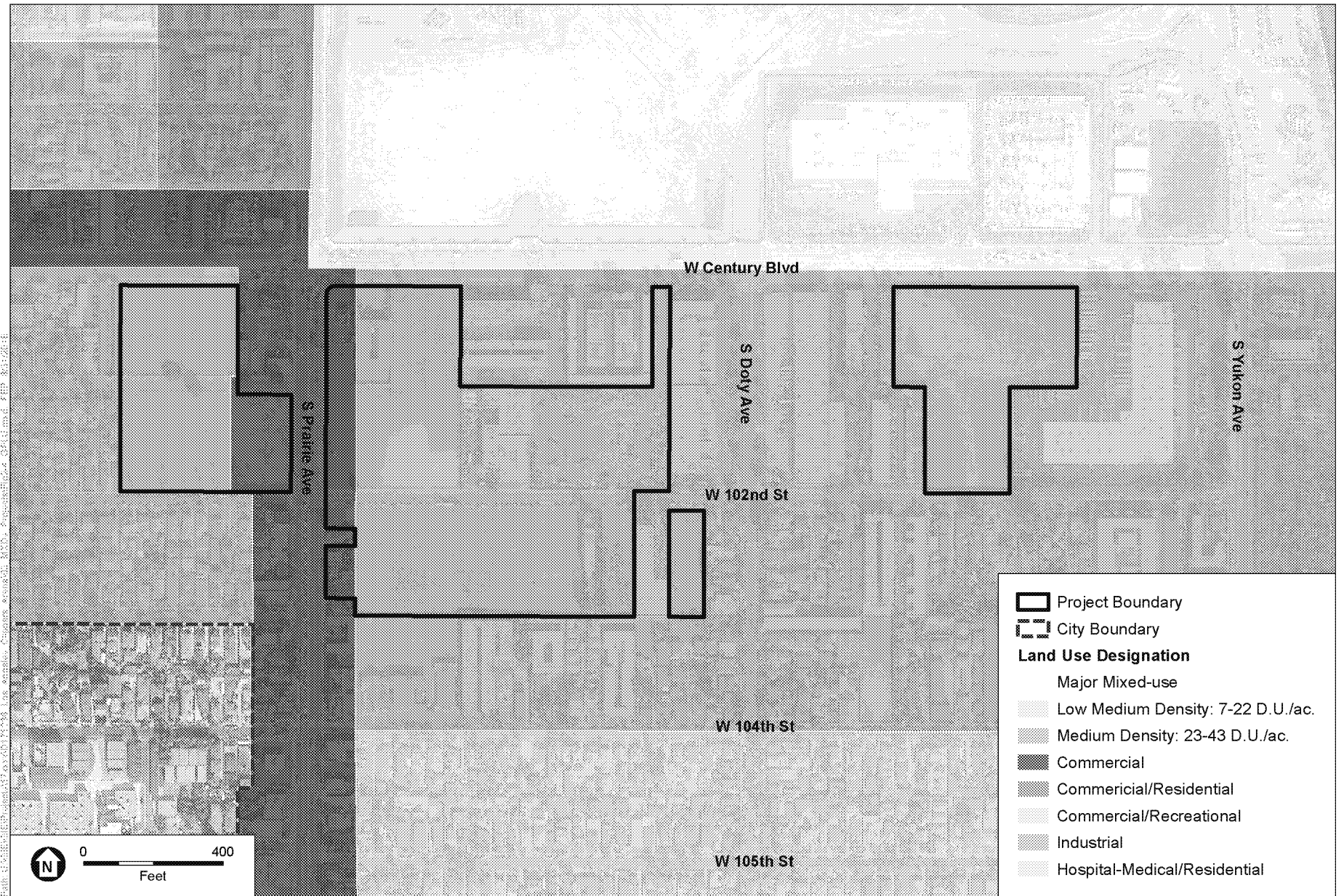


SOURCE: Open Streetmap, 2018; ESA, 2018

Inglewood Basketball and Entertainment Center

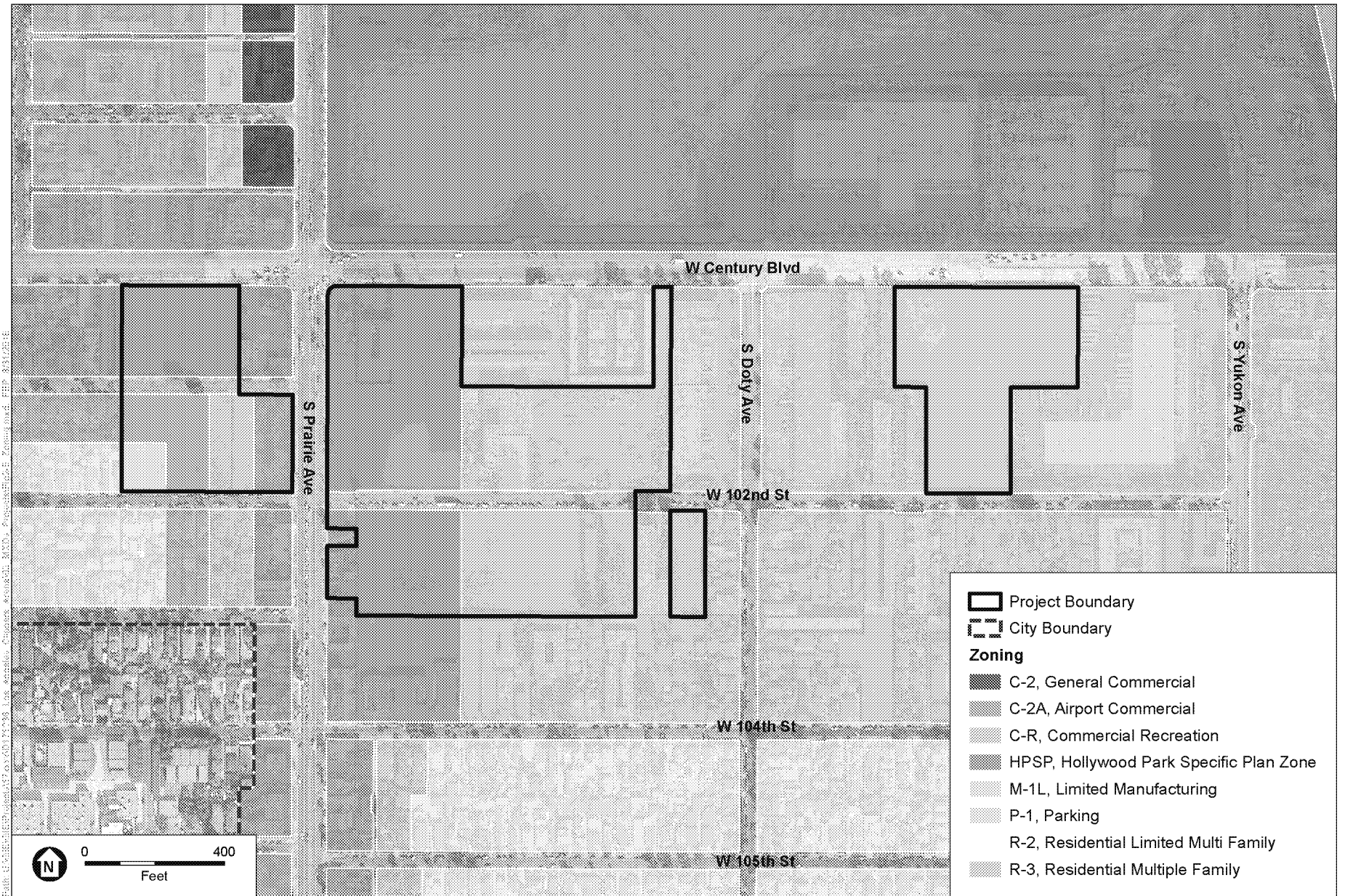
Figure 2-4
LAX Noise Contours Map





SOURCE: TerraServer, 2018; City of Inglewood, 2017; ESA, 2018

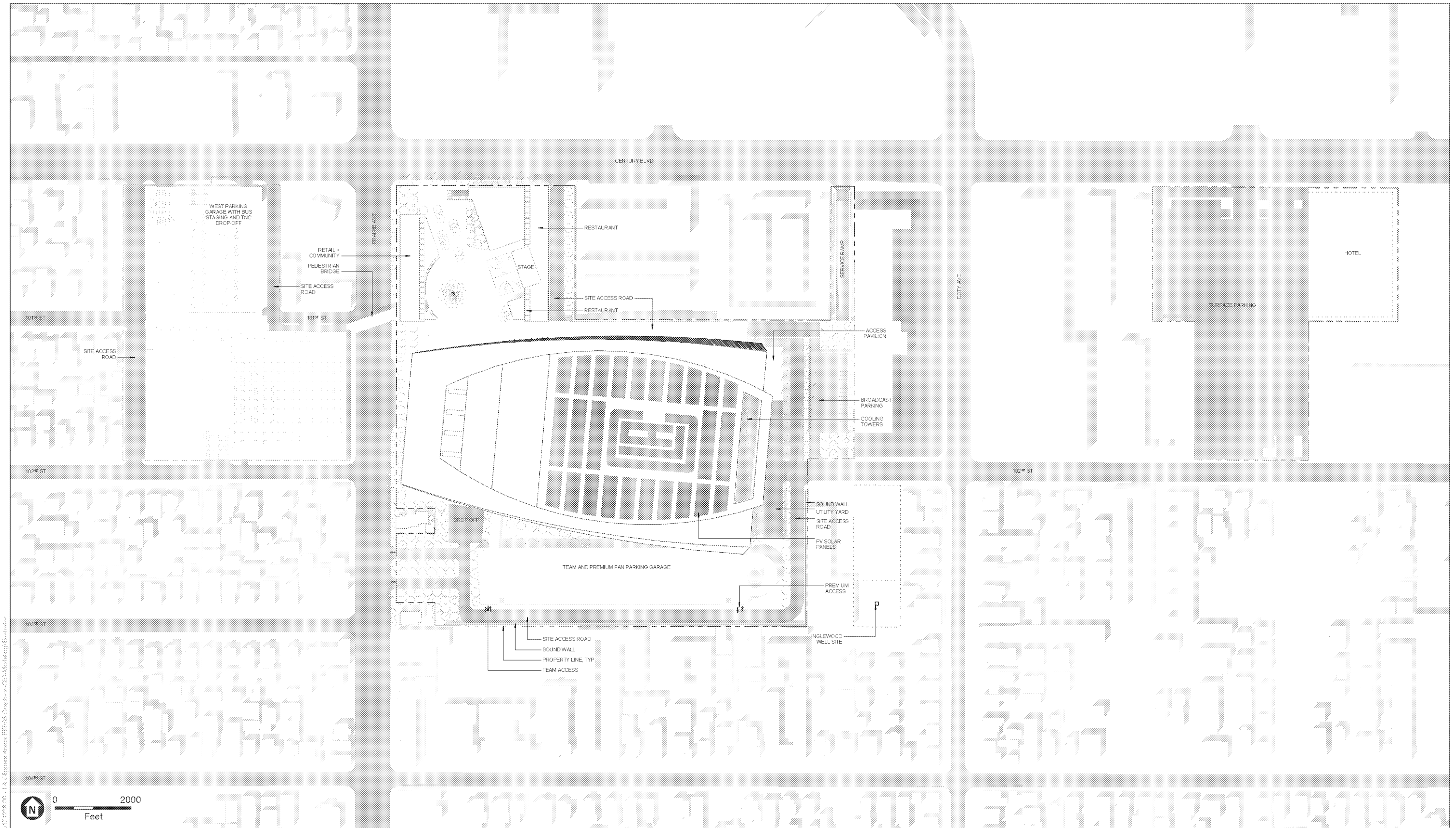
Inglewood Basketball and Entertainment Center
Figure 2-5
General Plan Land Use Designations



SOURCE: TerraServer, 2018; City of Ingleswood, 2017; ESA, 2018

Ingleswood Basketball and Entertainment Center

Figure 2-6
Zoning Designations

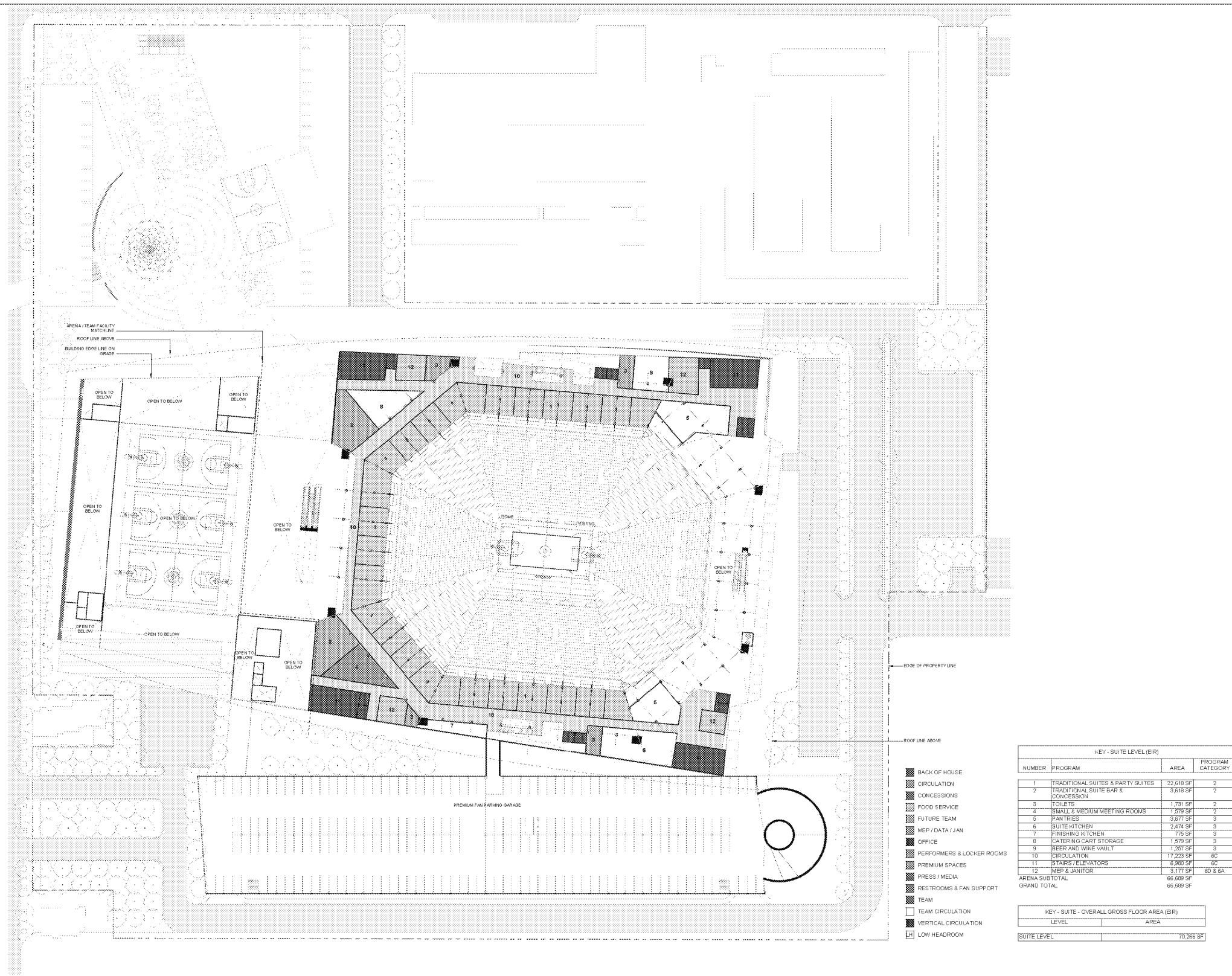


SOURCE: AECOM, September 2018

Inglewood Basketball and Entertainment Center

Figure 2-7
Site Plan





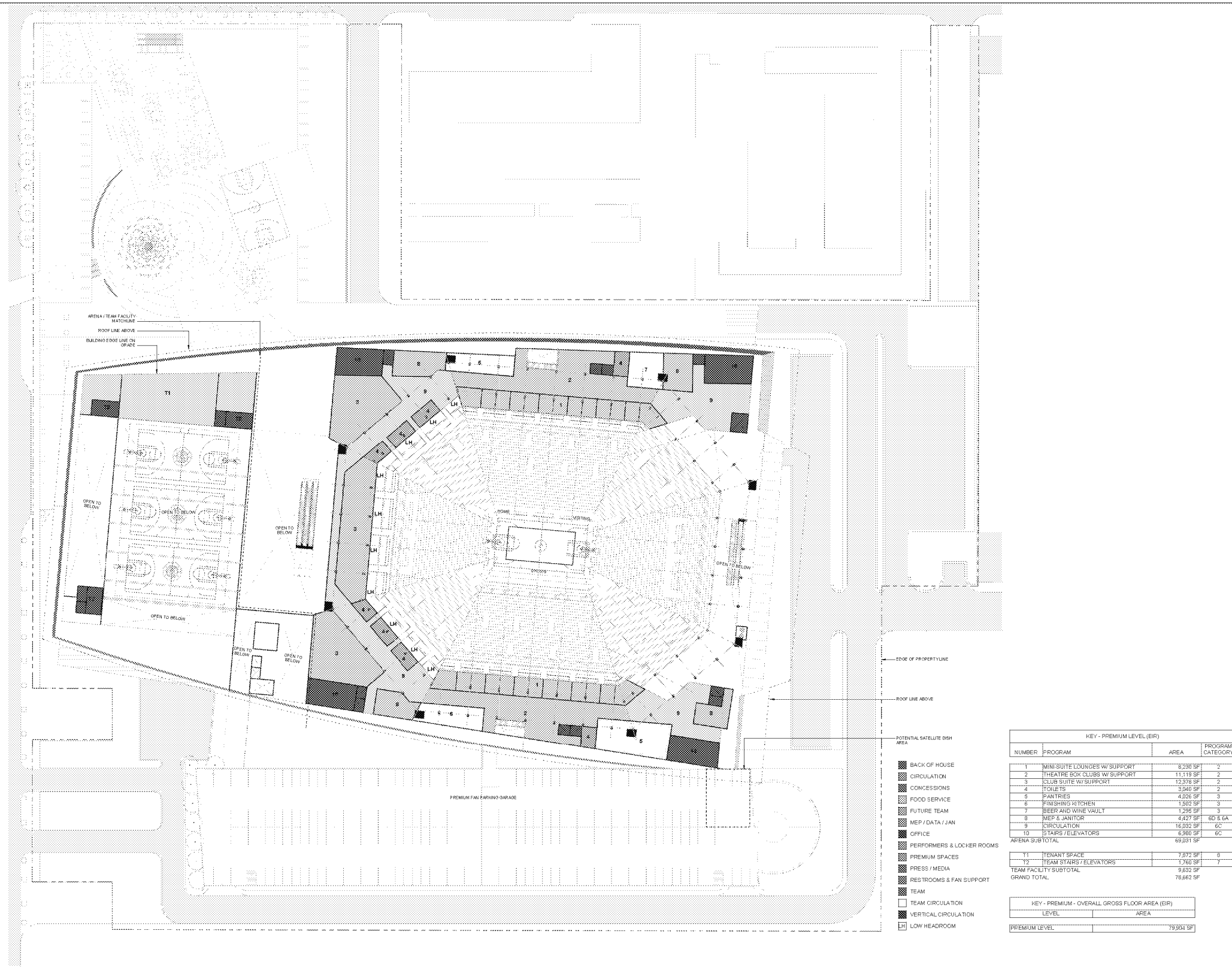
5/17/17 10:26:00 - 1.4 - Responses to RFP 16-001 - 1.4 - Responses to RFP 16-001 - 1.4 - Responses to RFP 16-001 - 1.4 - Responses to RFP 16-001

Scale in Feet

SUITE LEVEL FLOOR PLAN
1/8" = 1'-0"

Figure 2-11
Suite Level Floor Plan





KEY - PREMIUM LEVEL (EIR)			
NUMBER	PROGRAM	AREA	PROGRAM CATEGORY
1	MINI SUITE LOUNGES W/ SUPPORT	8,280 SF	2
2	THEATRE BOX CLUBS W/ SUPPORT	11,118 SF	2
3	CLUB SUITE W/ SUPPORT	12,878 SF	2
4	TOILETS	3,948 SF	2
5	PANTRIES	4,026 SF	3
6	FINISHING KITCHEN	1,502 SF	3
7	BEER AND WINE VAULT	1,295 SF	3
8	MEP & JANITOR	4,427 SF	6D & 6A
9	CIRCULATION	16,032 SF	6C
10	STAIRS / ELEVATORS	6,860 SF	6C
ARENA SUB TOTAL		69,031 SF	
T1	TENANT SPACE	7,372 SF	8
T2	TEAM STAIRS / ELEVATORS	1,760 SF	7
TEAM FACILITY SUB TOTAL		9,132 SF	
GRAND TOTAL		78,163 SF	

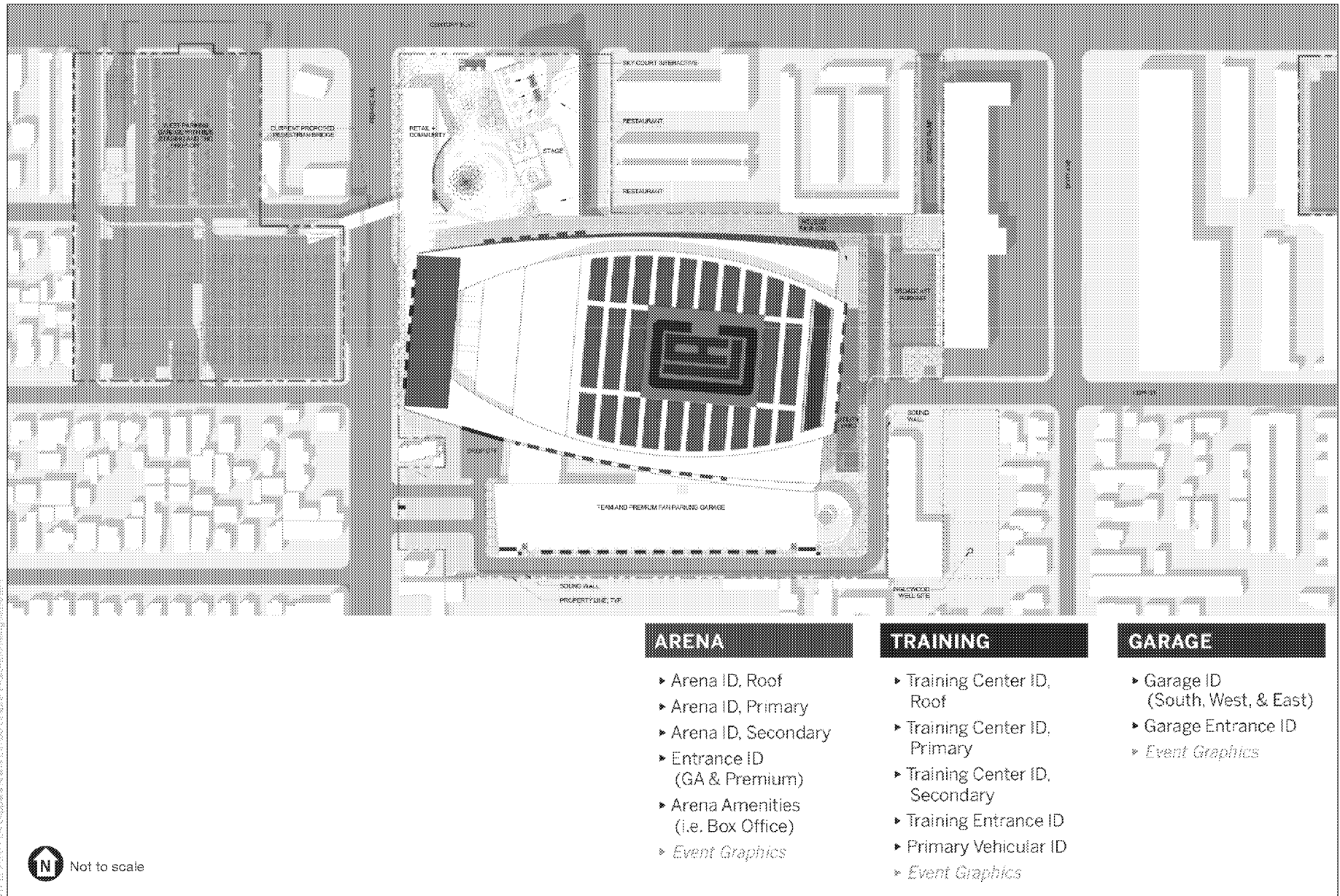
KEY - PREMIUM - OVERALL GROSS FLOOR AREA (EIR)	
LEVEL	AREA
PREMIUM LEVEL	79,994 SF

PREMIUM LEVEL FLOOR PLAN
1/32" = 1'-0"

Scale in Feet

5/17/18 10:26 AM - 1.4 - Responses: Aecoms_EIR_2018_09_14_10:26:00 - 1.4 - Responses: Aecoms_EIR_2018_09_14_10:26:00

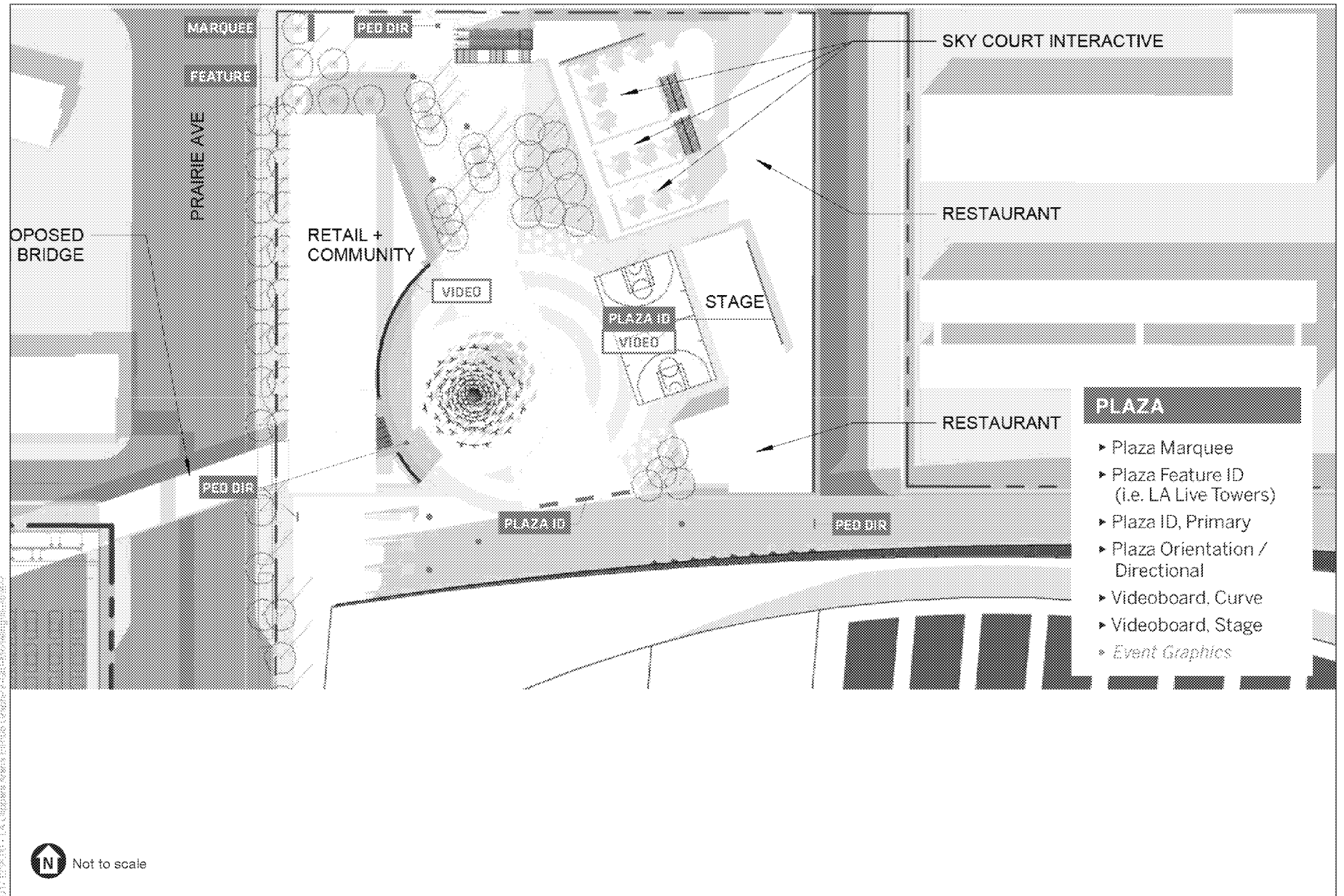
Figure 2-12
Premium Level Floor Plan



SOURCE: AECOM, September 2018

Inglewood Basketball and Entertainment Center

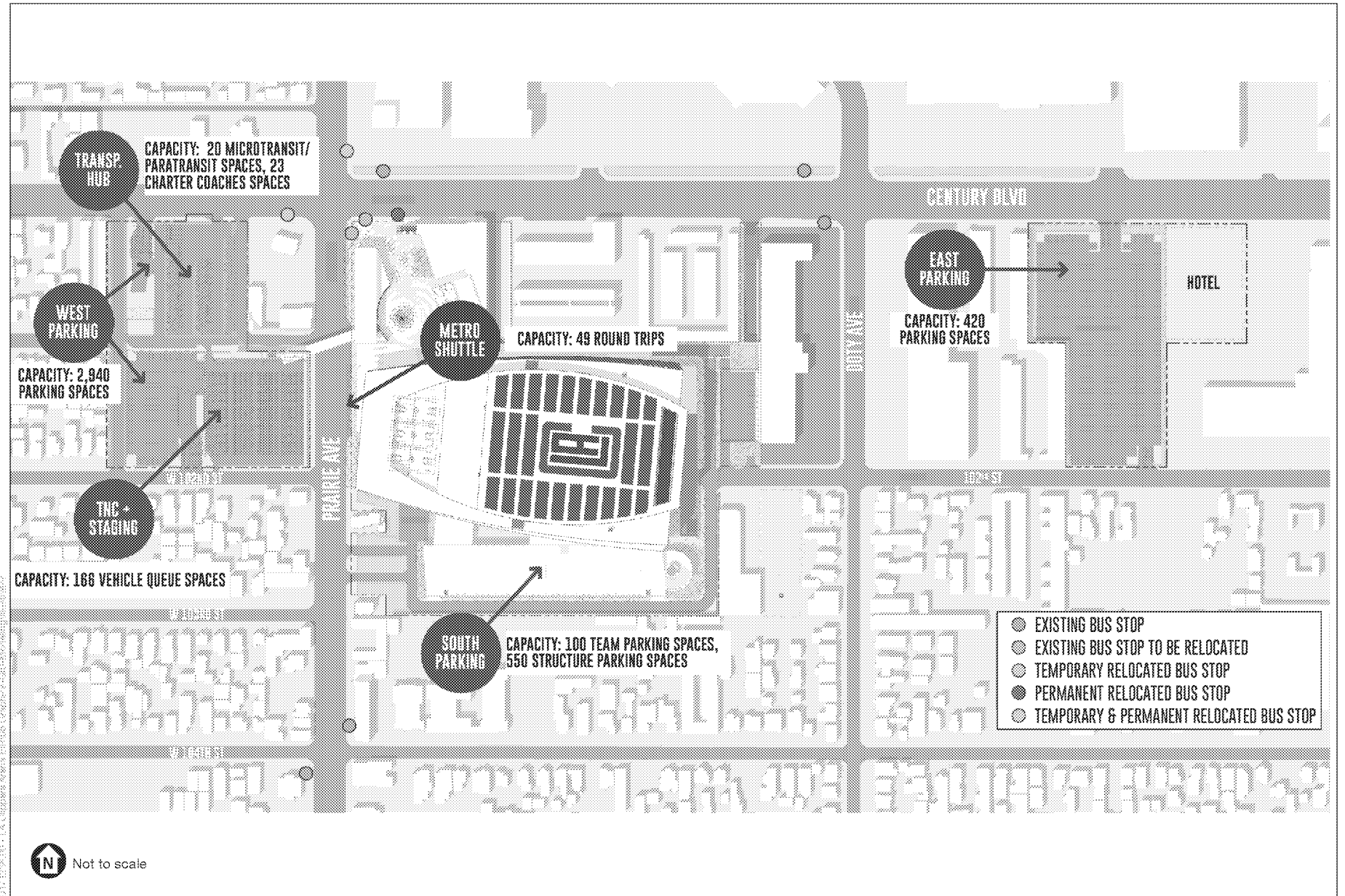
Figure 2-17
Conceptual Sign Locations - Arena, Training Facility, Southern Parking Garage



SOURCE: AECOM, September 2018

Inglewood Basketball and Entertainment Center

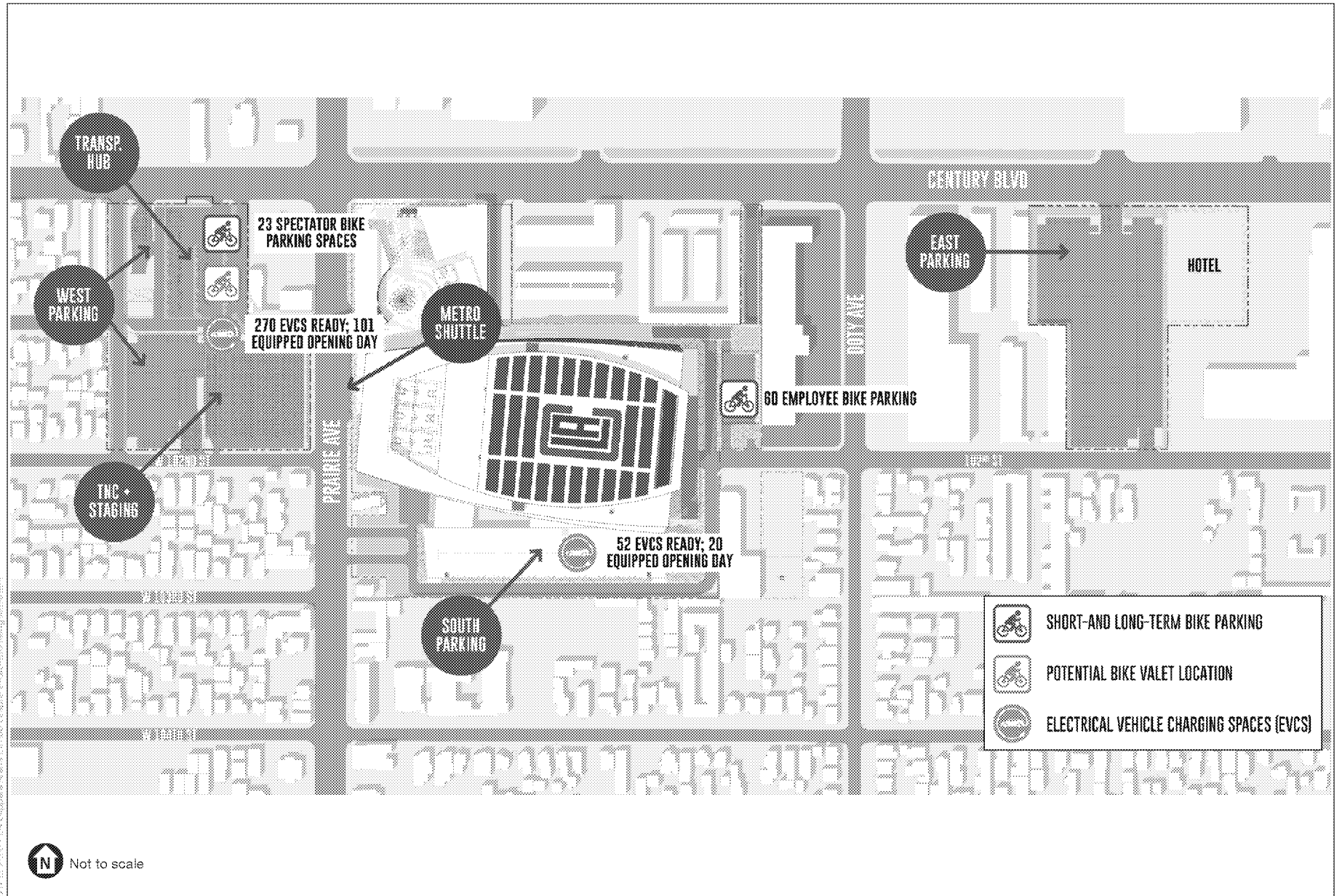
Figure 2-18
Conceptual Sign Locations - Plaza



SOURCE: AECOM, September 2018

Inglewood Basketball and Entertainment Center

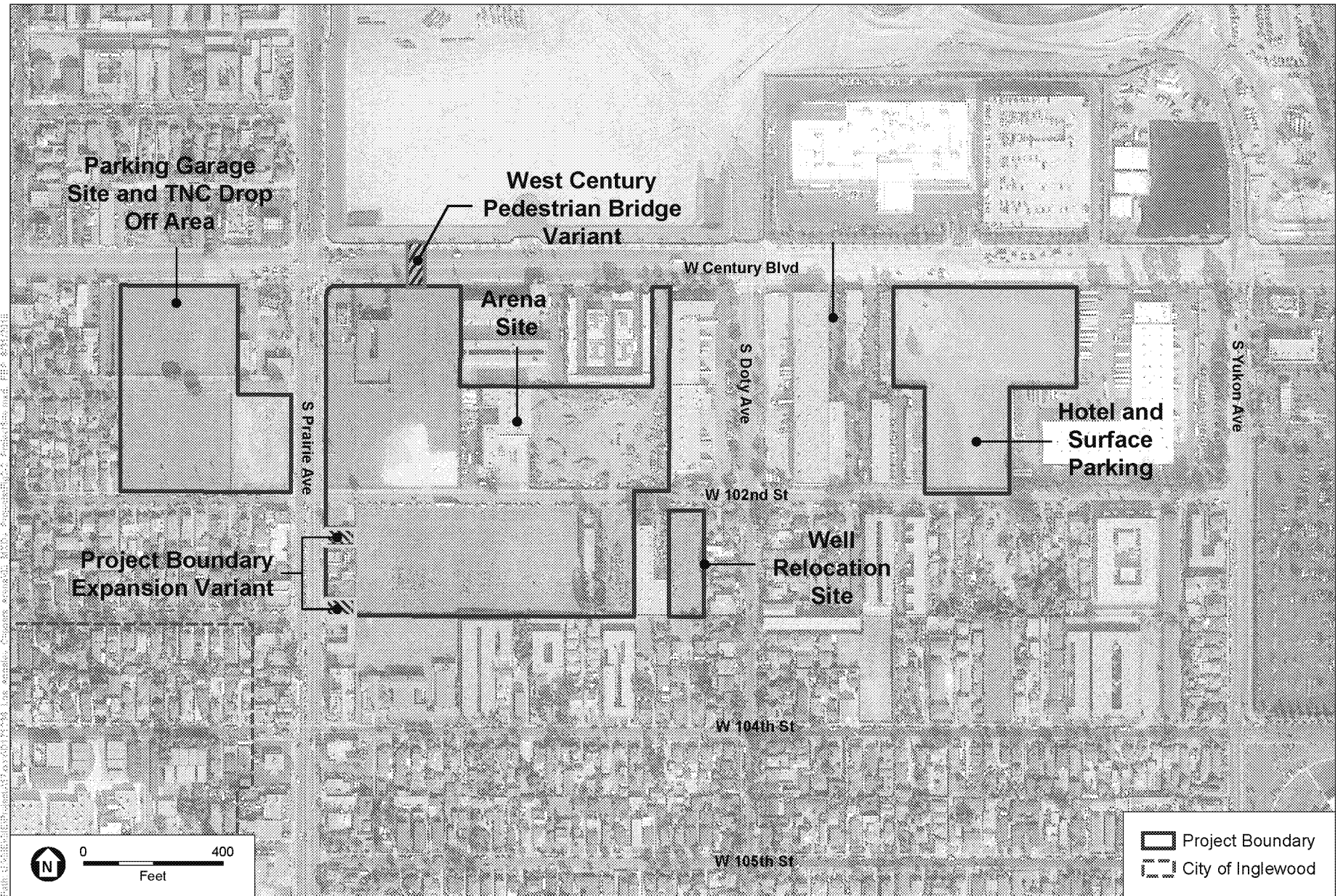
Figure 2-19
Temporary and Permanent Bus Stop Relocations



SOURCE: AECOM, September 2018

Inglewood Basketball and Entertainment Center

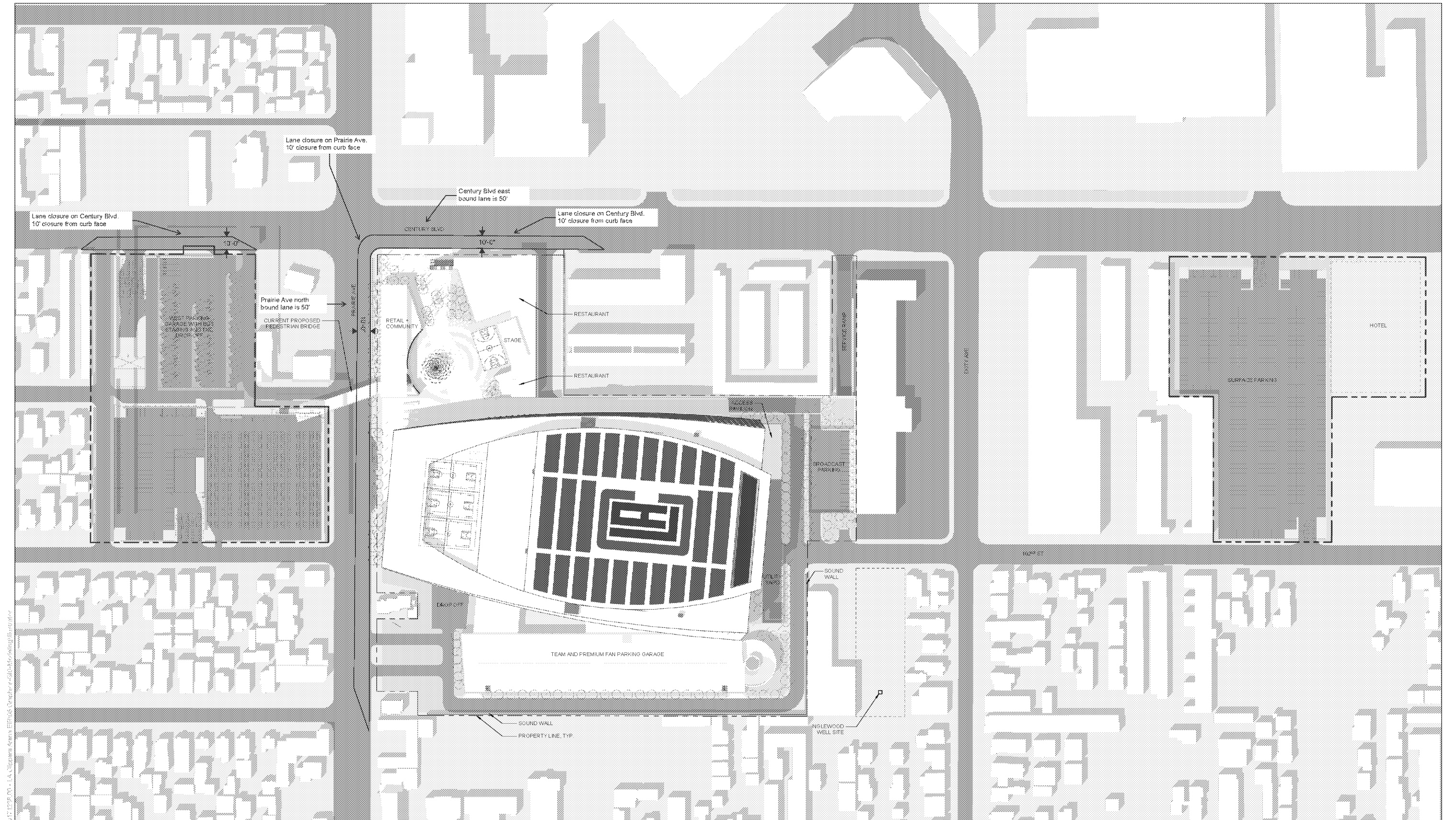
Figure 2-20
Bicycle and Electric Vehicle Parking



SOURCE: TerraServer, 2018; ESA, 2018

Inglewood Basketball and Entertainment Center

Figure 2-21
Project Variants



SOURCE: AECOM, September 2018

Ingleswood Basketball and Entertainment Center

Figure 2-22
Construction - Lane Closures