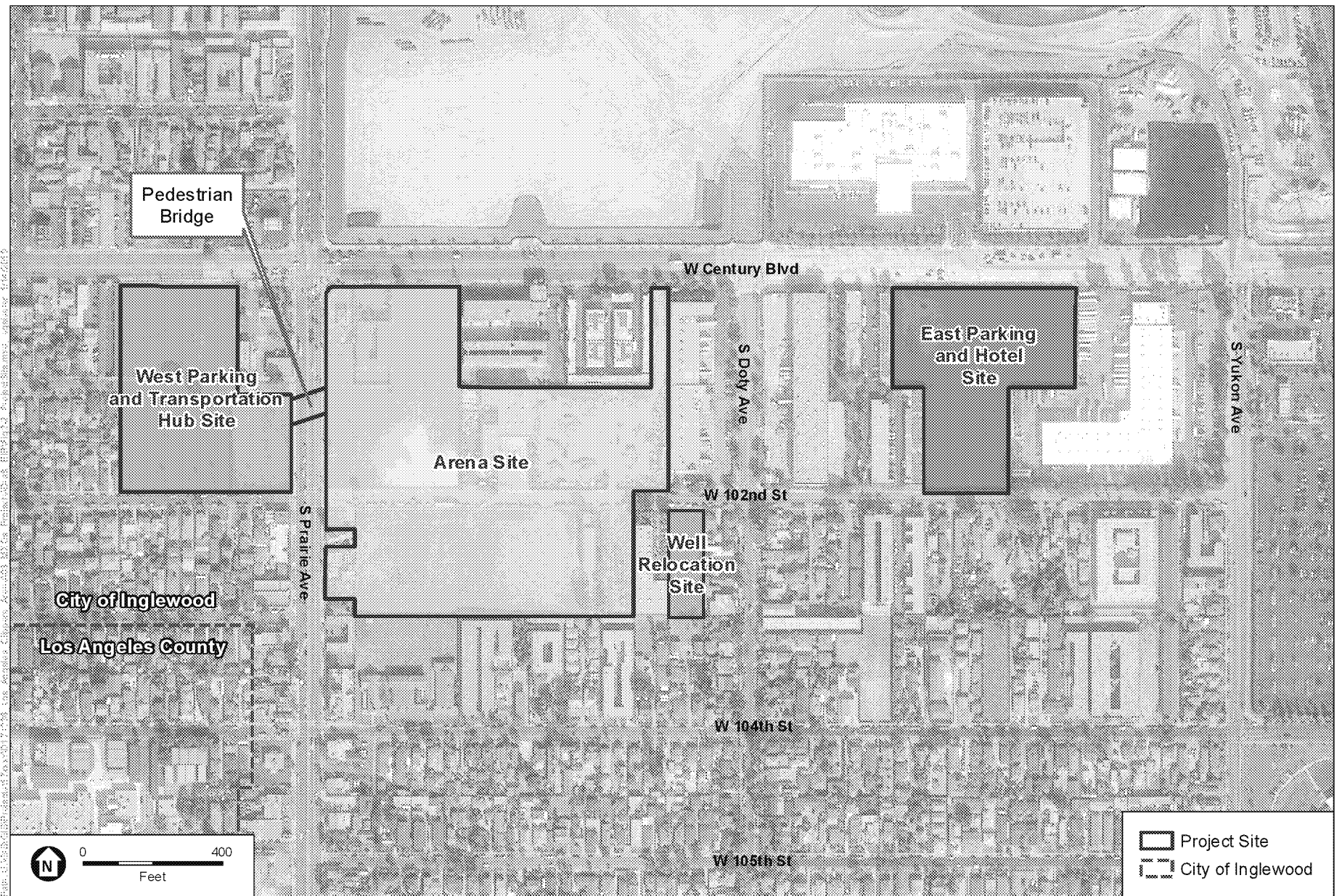


SOURCE: Open Streetmap, 2018; ESA, 2019.

Inglewood Basketball and Entertainment Center

**Figure 2-1**  
Regional Map

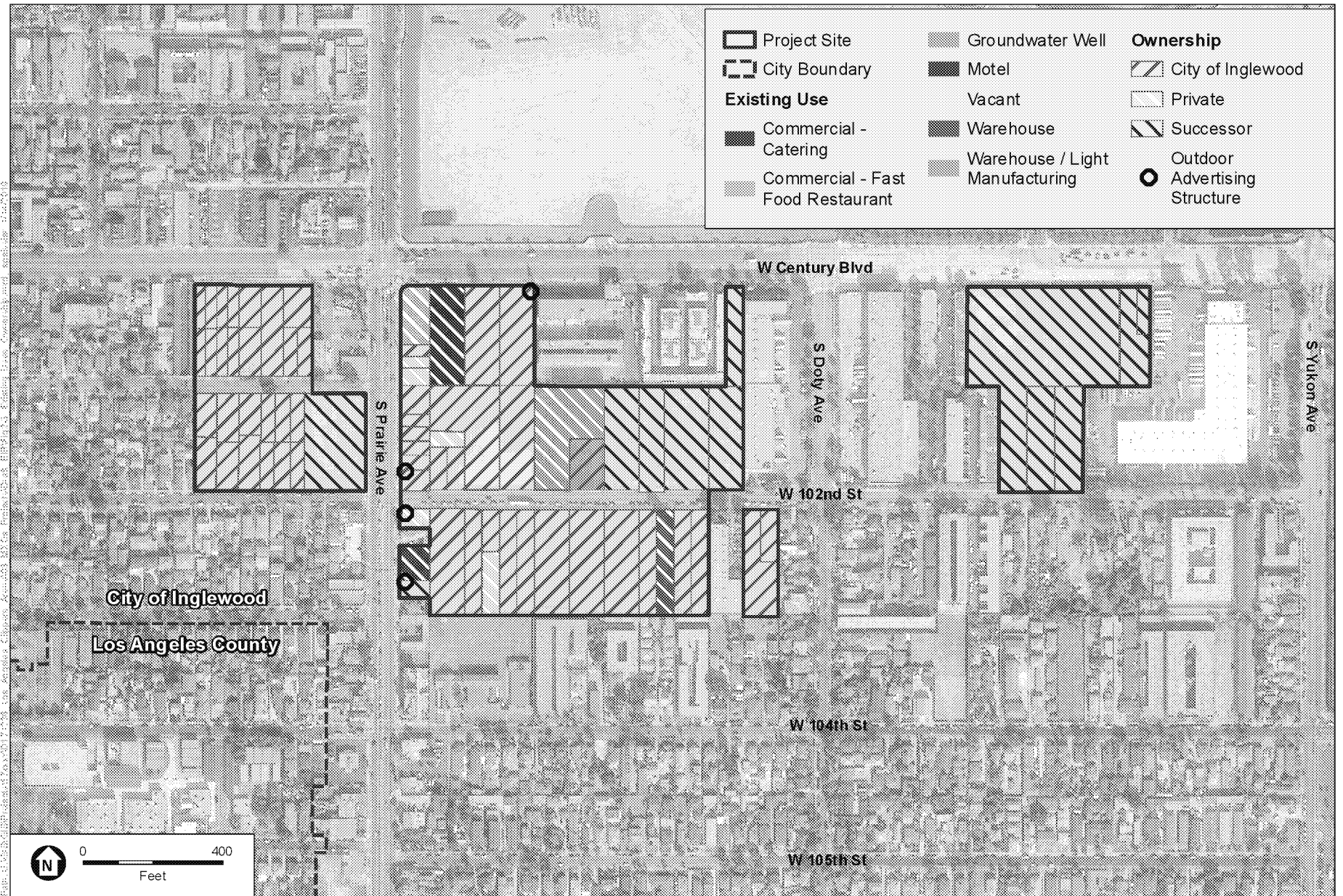




SOURCE: TerraServer, 2018; ESA, 2019.

Inglewood Basketball and Entertainment Center

**Figure 2-2**  
Project Site



SOURCE: TerraServer, 2018; City of Inglewood, 2017; ESA, 2019.

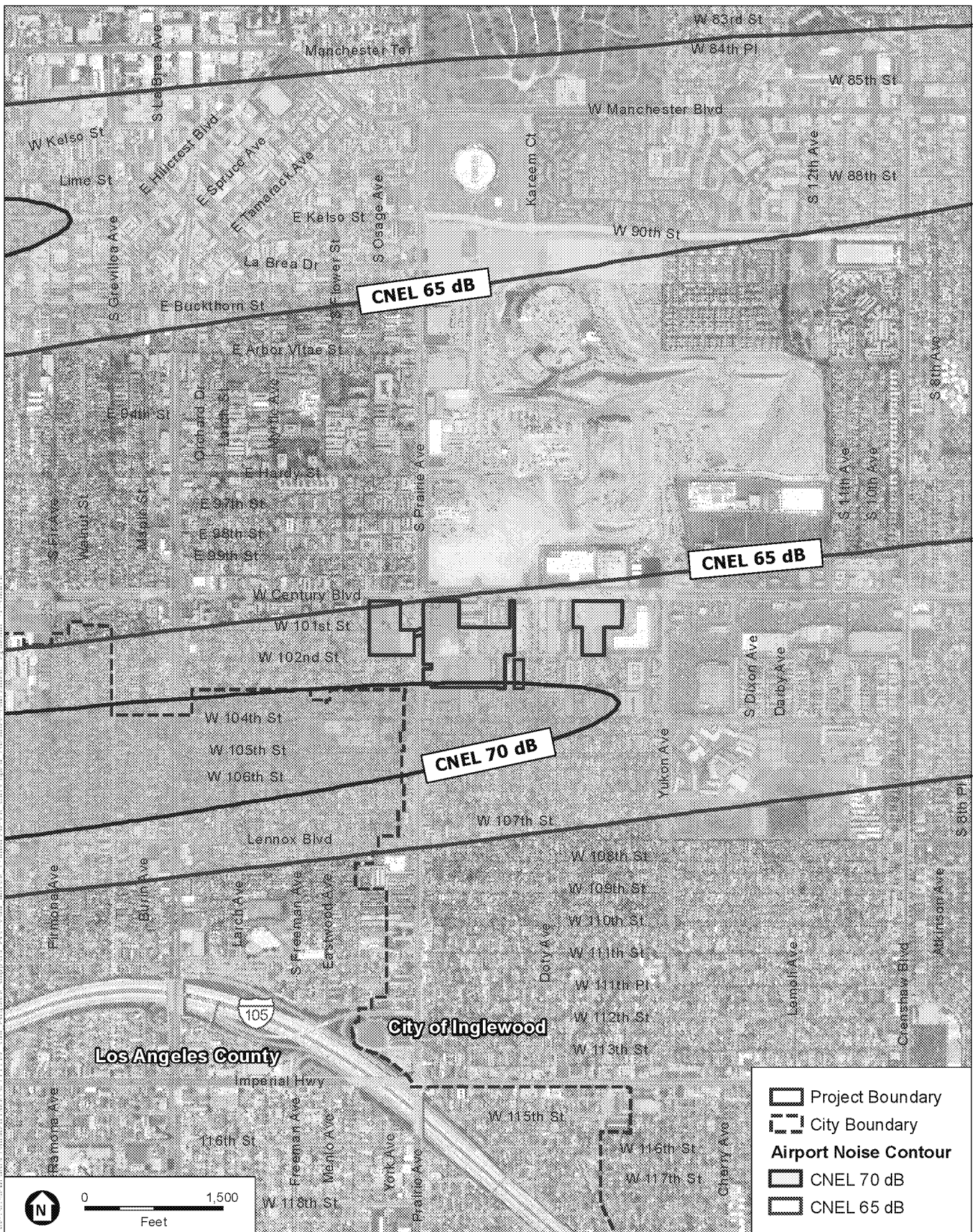
Inglewood Basketball and Entertainment Center

**Figure 2-3**  
Existing Uses and Ownership



SOURCE: TerraServer, 2018; City of Inglewood, 2017; ESA, 2019.

Inglewood Basketball and Entertainment Center  
**Figure 2-4**  
 City or Successor Agency Parcels

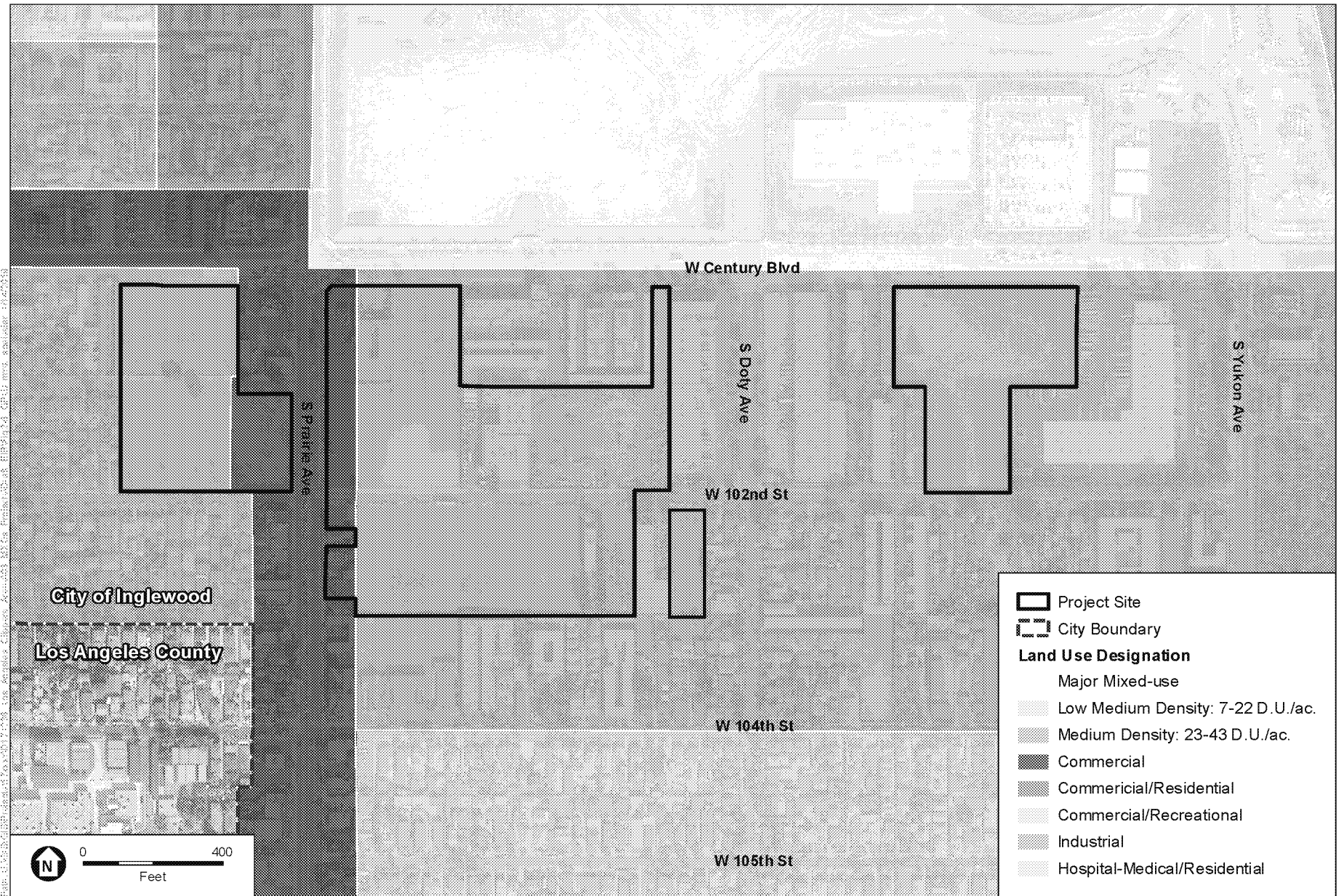


SOURCE: Open Streetmap, 2018; ESA, 2019.

Inglewood Basketball and Entertainment Center

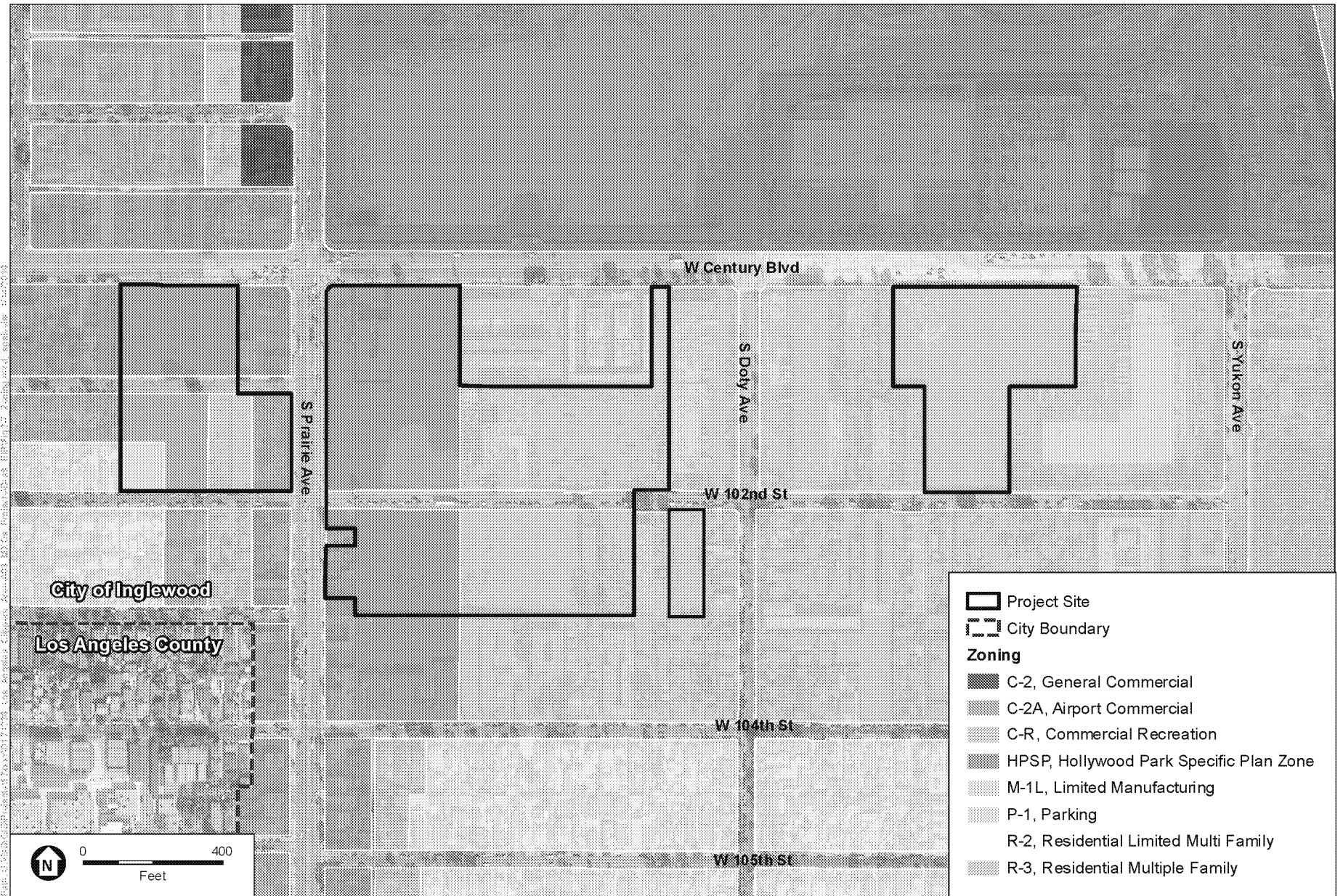
**Figure 2-5**  
LAX Noise Contours Map





SOURCE: TerraServer, 2018; City of Inglewood, 2017; ESA, 2019.

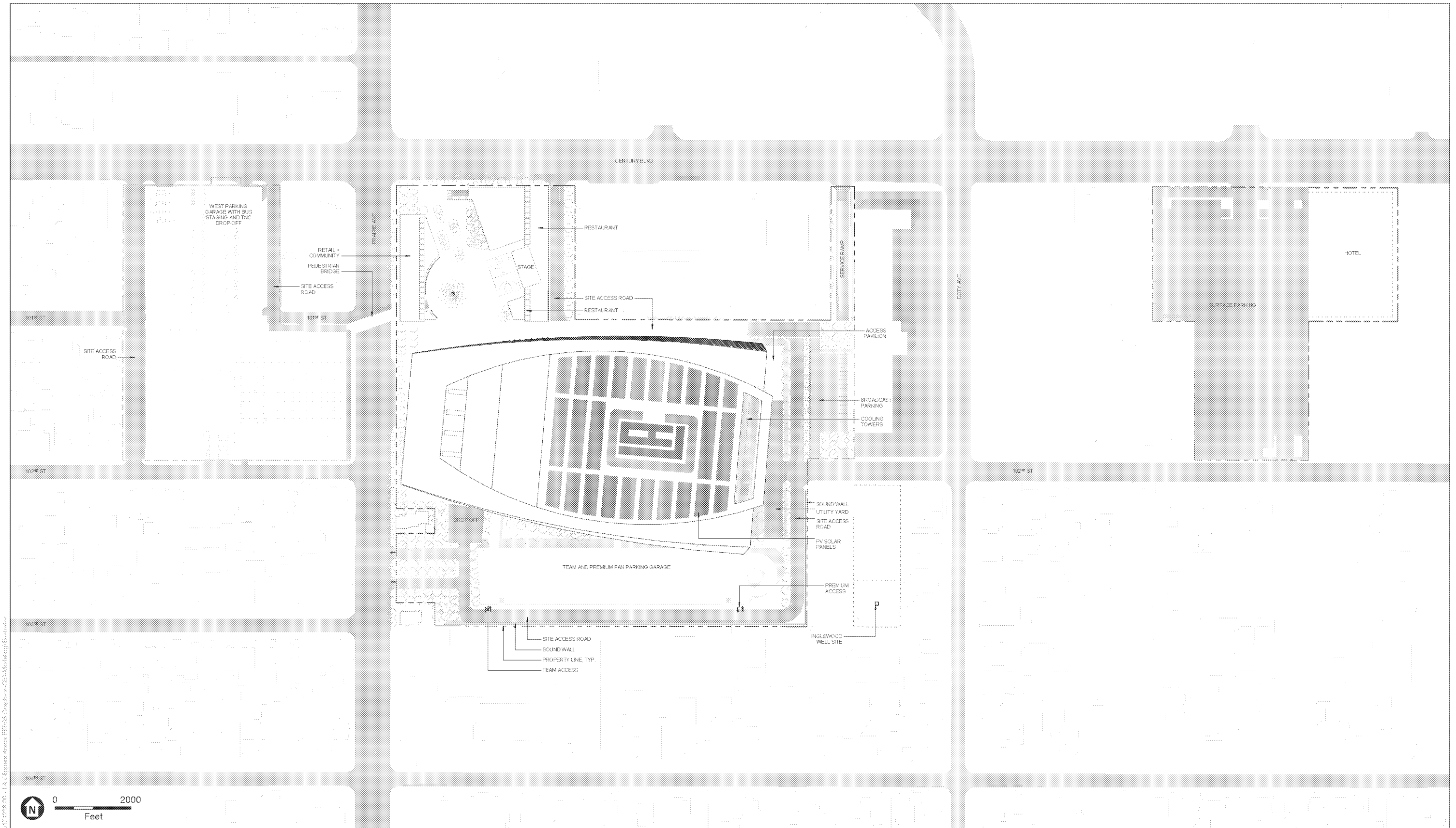
Inglewood Basketball and Entertainment Center  
**Figure 2-6**  
 General Plan Land Use Designations



SOURCE: TerraServer, 2018; City of Inglewood, 2017; ESA, 2019.

Inglewood Basketball and Entertainment Center

**Figure 2-7**  
Zoning Designations



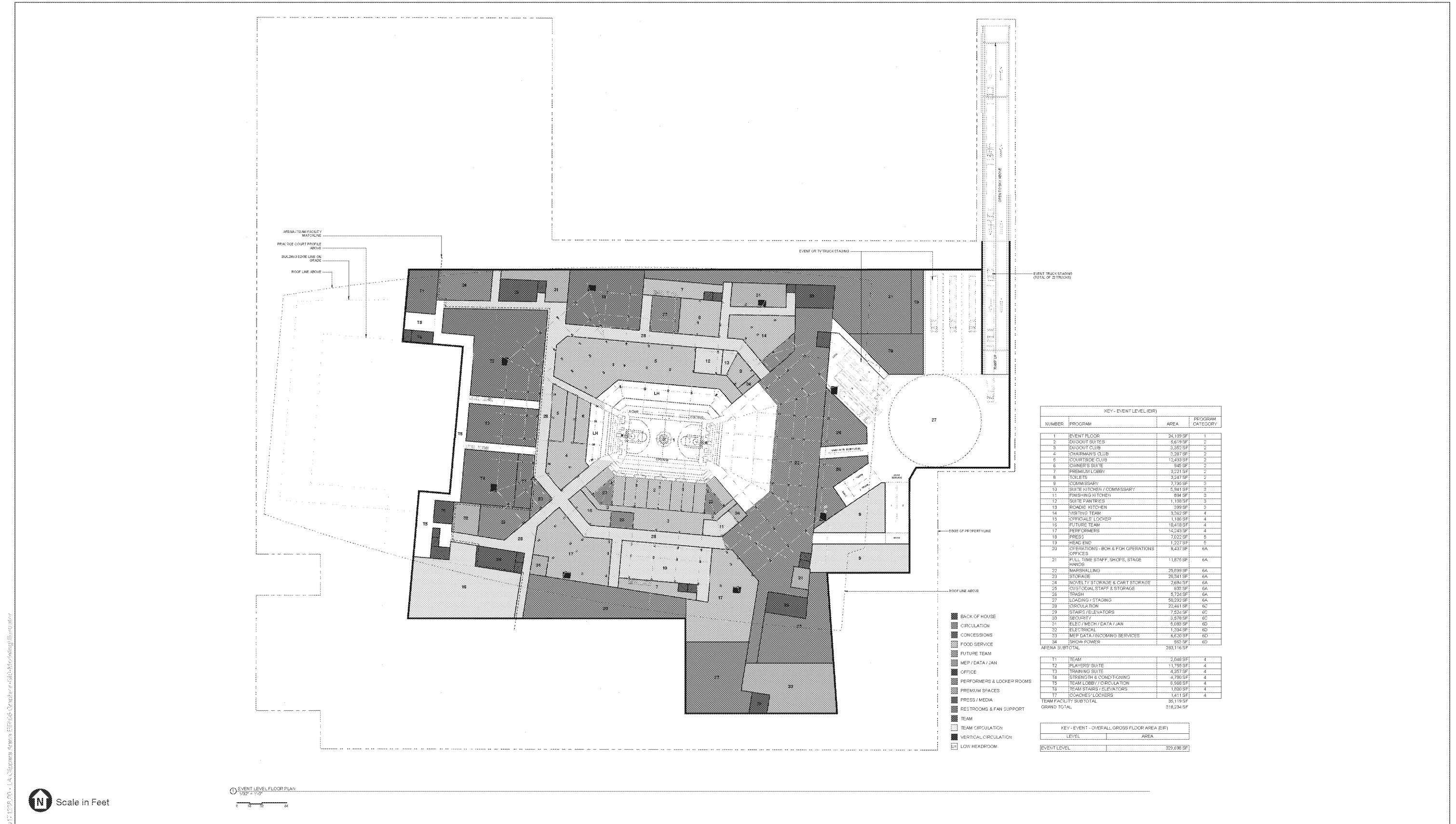
SOURCE: AECOM, September 2018

Inglewood Basketball and Entertainment Center

**Figure 2-8**  
Conceptual Site Plan





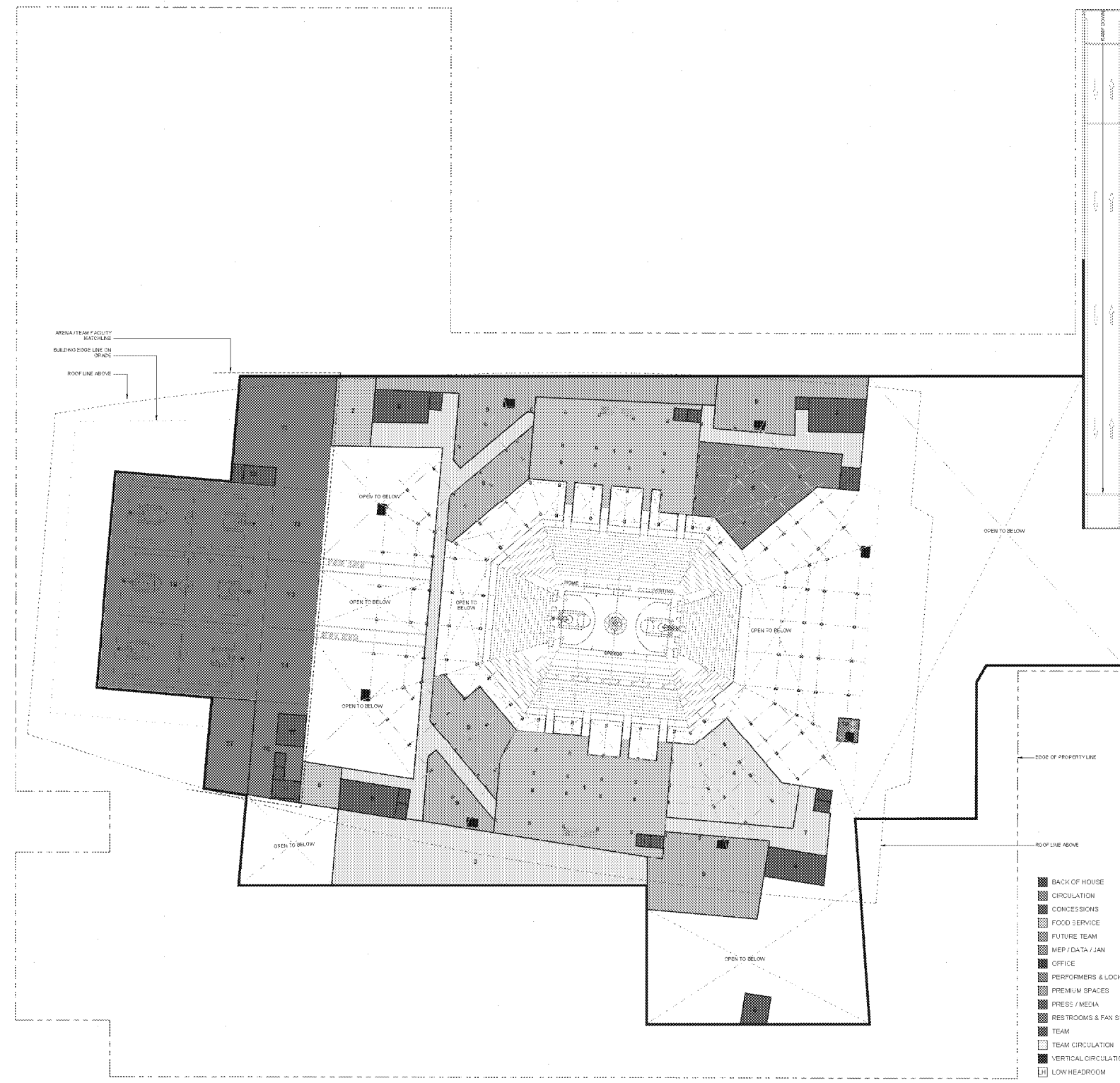


SOURCE: AECOM, September 2018

Ingleswood Basketball and Entertainment Center

**Figure 2-9**  
Conceptual Event Level Floor Plan





- BACK OF HOUSE
- CIRCULATION
- CONCESSIONS
- FOOD SERVICE
- FUTURE TEAM
- MEP / DATA / JAN
- OFFICE
- PERFORMERS & LOCKER ROOMS
- PREMIUM SPACES
- PRESS / MEDIA
- RESTROOMS & FAN SUPPORT
- TEAM
- TEAM CIRCULATION
- VERTICAL CIRCULATION
- LOW HEADROOM

KEY - CLUB LEVEL (EIR)			
NUMBER	PROGRAM	AREA	PROGRAM CATEGORY
1	1ST LEVEL CLUB W/ SUPPORT	22,742 SF	2
2	SMALL & MEDIUM MEETING ROOMS	2,931 SF	7
3	FOOD SERVICE ADMIN W/F & B	12,635 SF	3
4	LOCKERS	1,290 SF	3
5	CENTRAL KITCHEN	1,290 SF	3
6	FAMILY / RELATIVE AREA	1,290 SF	4
6	PART TIME EMPLOYEE LOCKER FACILITIES	7,613 SF	6A
7	CIRCULATION - HORIZONTAL	13,897 SF	6C
8	STAIRS / ELEVATORS	7,524 SF	6C
9	PAN ROOM / ELECT / DATA	26,896 SF	6D
10	TRASH	394 SF	6A
ARENA SUBTOTAL		106,278 SF	
11	SPORTS / ANCILLARY LOCKERS	7,538 SF	4
12	PLAYERS' SUITE	2,977 SF	4
13	TRAINING SUITE	2,792 SF	4
14	STRENGTH & CONDITIONING	2,993 SF	4
15	TEAM STAIRS / ELEVATORS	1,863 SF	4
16	TEAM LOBBY	2,475 SF	4
17	TEAM STORAGE	3,037 SF	4
18	PRACTICE COURTS	26,523 SF	4
TEAM FACILITY SUBTOTAL		30,138 SF	
GRAND TOTAL		136,416 SF	

KEY - CLUB - OVERALL GROSS FLOOR AREA (EIR)	
LEVEL	AREA
CLUB LEVEL	169,299 SF

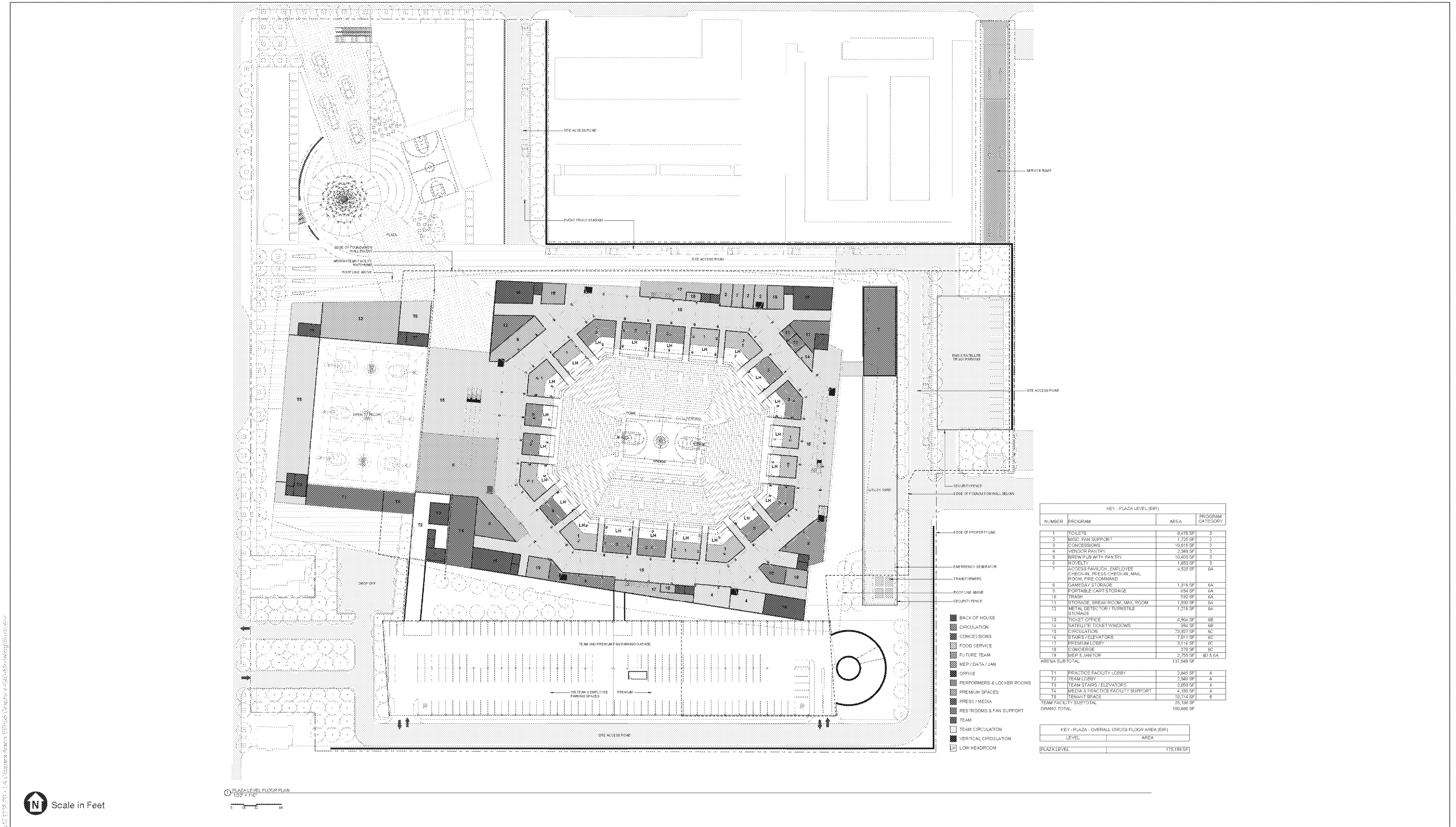
Scale in Feet  
 CLUB LEVEL FLOOR PLAN  
 1/2" = 1'-0"  
 0 10 20 40

SOURCE: AECOM, September 2018

Inglewood Basketball and Entertainment Center

**Figure 2-10**  
Conceptual Club Level Floor Plan



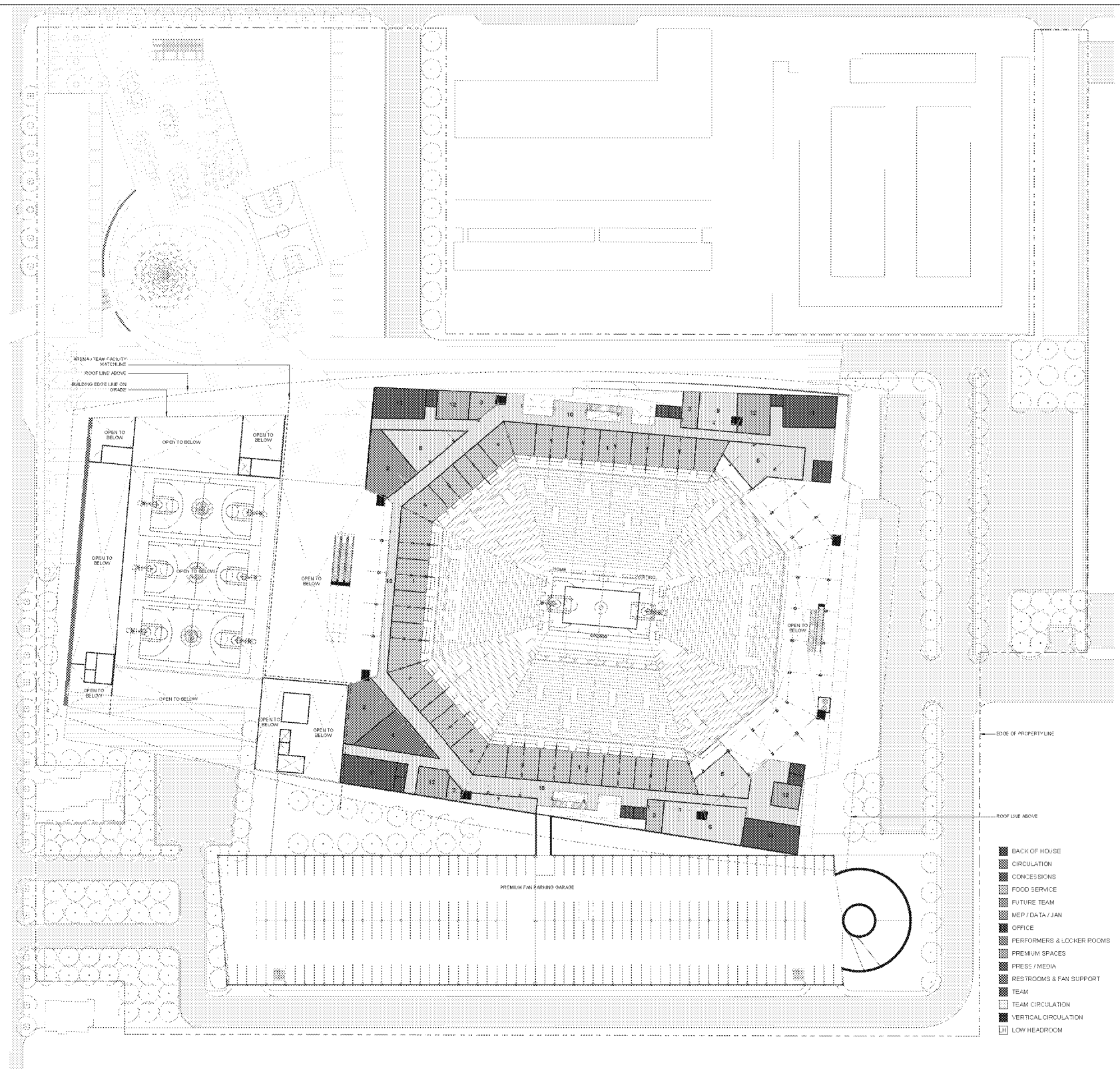


SOURCE: AECOM, September 2018

Ingleswood Basketball and Entertainment Center

**Figure 2-11**  
Conceptual Plaza Level Floor Plan





- BACK OF HOUSE
- CIRCULATION
- CONCESSIONS
- FOOD SERVICE
- FUTURE TEAM
- MEP / DATA / JAN
- OFFICE
- PERFORMERS & LOCKER ROOMS
- PREMIUM SPACES
- PRESS / MEDIA
- RESTROOMS & FAN SUPPORT
- TEAM
- TEAM CIRCULATION
- VERTICAL CIRCULATION
- LOW HEADROOM

KEY - SUITE LEVEL (EIR)			
NUMBER	PROGRAM	AREA	PROGRAM CATEGORY
1	TRADITIONAL SUITES & PARTY SUITES	22,518 SF	2
2	TRADITIONAL SUITE BAR & CONCESSION	3,618 SF	2
3	TOILETS	1,791 SF	2
4	SMALL & MEDIUM MEETING ROOMS	1,579 SF	2
5	PANTRIES	3,877 SF	3
6	SUITE KITCHEN	2,424 SF	3
7	FINISHING KITCHEN	775 SF	3
8	CATERING CART STORAGE	1,579 SF	3
9	SLEEP AND WINE VAULT	1,293 SF	3
10	CIRCULATION	17,223 SF	6C
11	STAIRS / ELEVATORS	6,980 SF	6C
12	MEP & JANITOR	3,177 SF	6D & BA
ARENA SUB-TOTAL		65,569 SF	
GRAND TOTAL		65,569 SF	

KEY - SUITE - OVERALL GROSS FLOOR AREA (EIR)		
LEVEL	AREA	
SUITE LEVEL	70,365 SF	

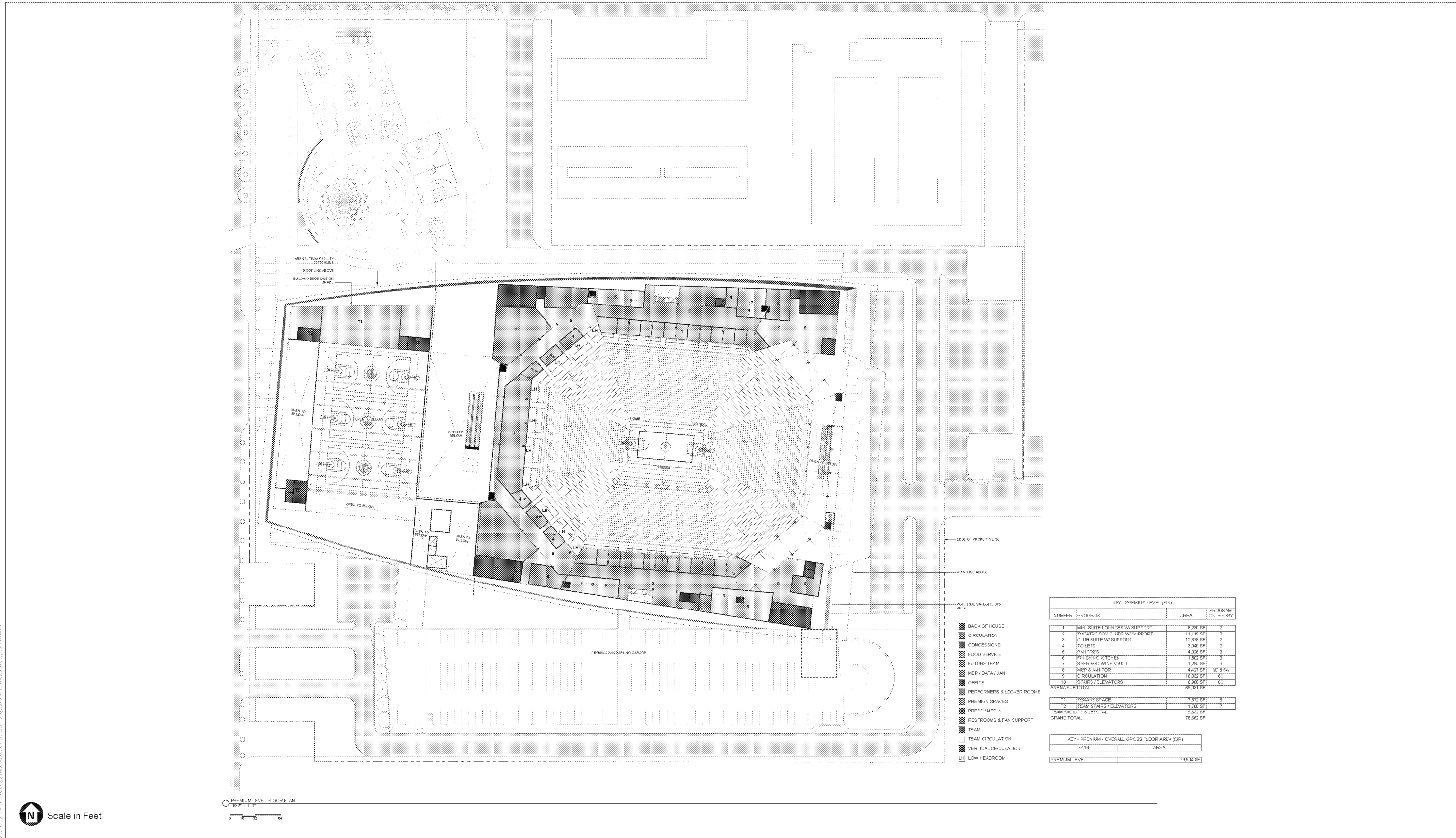
Scale in Feet

SUITE LEVEL FLOOR PLAN  
1/32" = 1'-0"

5/17/17 2:06:00 - 1.4.03 Response Report EIR 06/26/2017 - 4/28/2018/164683/164683.dwg

**Figure 2-12**  
Conceptual Suite Level Floor Plan

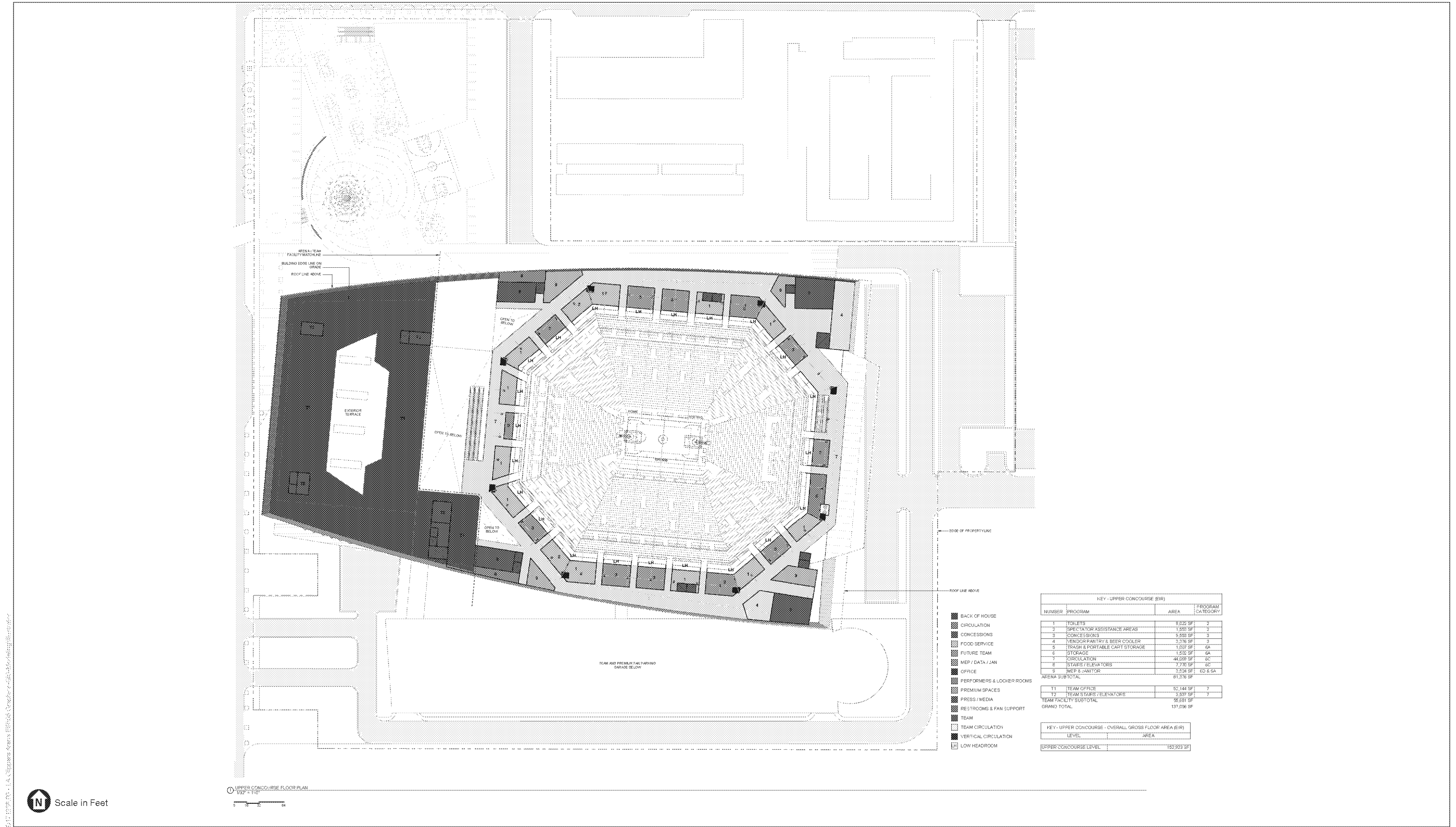




SOURCE: AECOM, September 2018

Inglewood Basketball and Entertainment Center

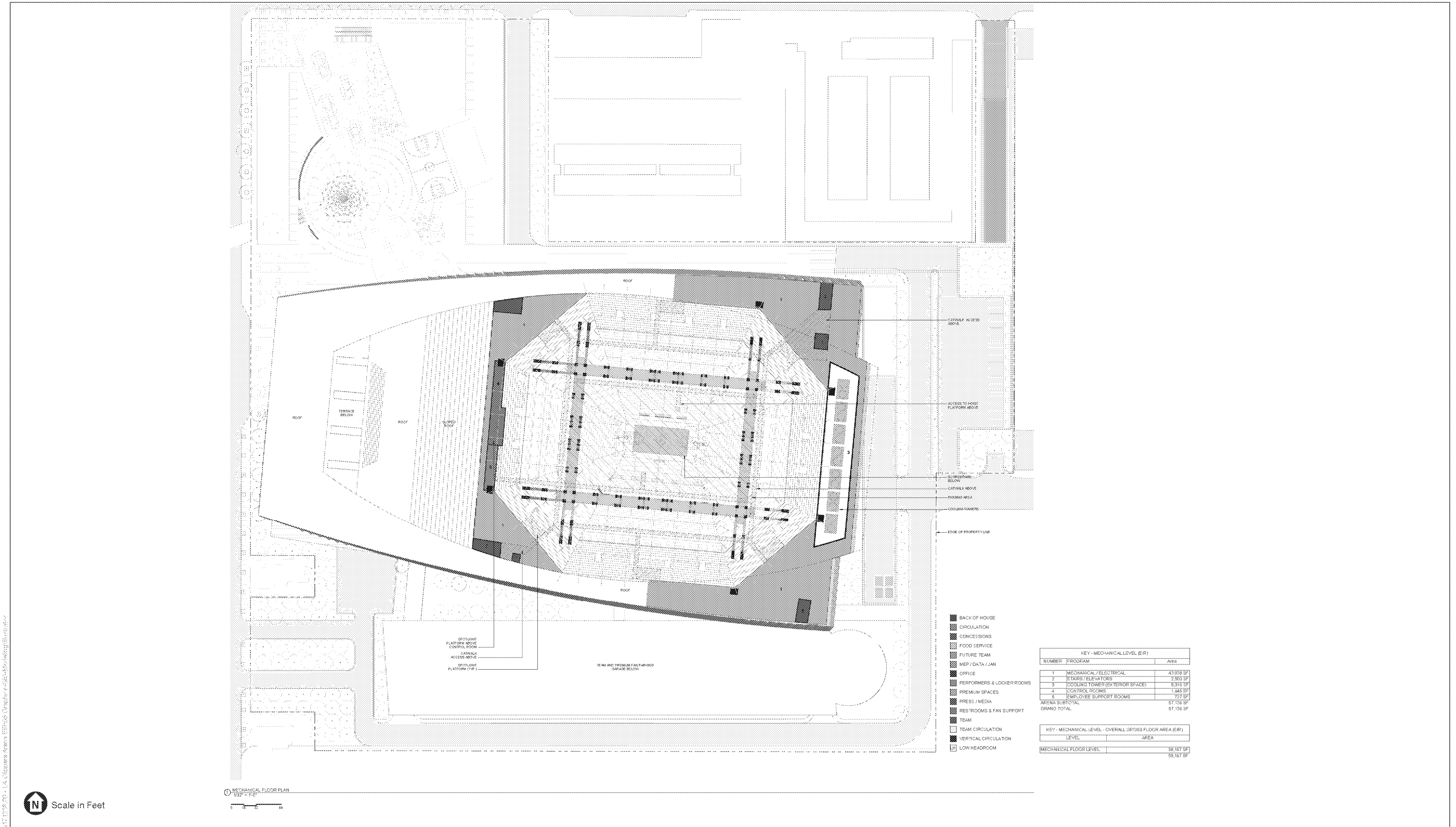
**Figure 2-13**  
Conceptual Premium Level Floor Plan



SOURCE: AECOM, September 2018

Ingleswood Basketball and Entertainment Center

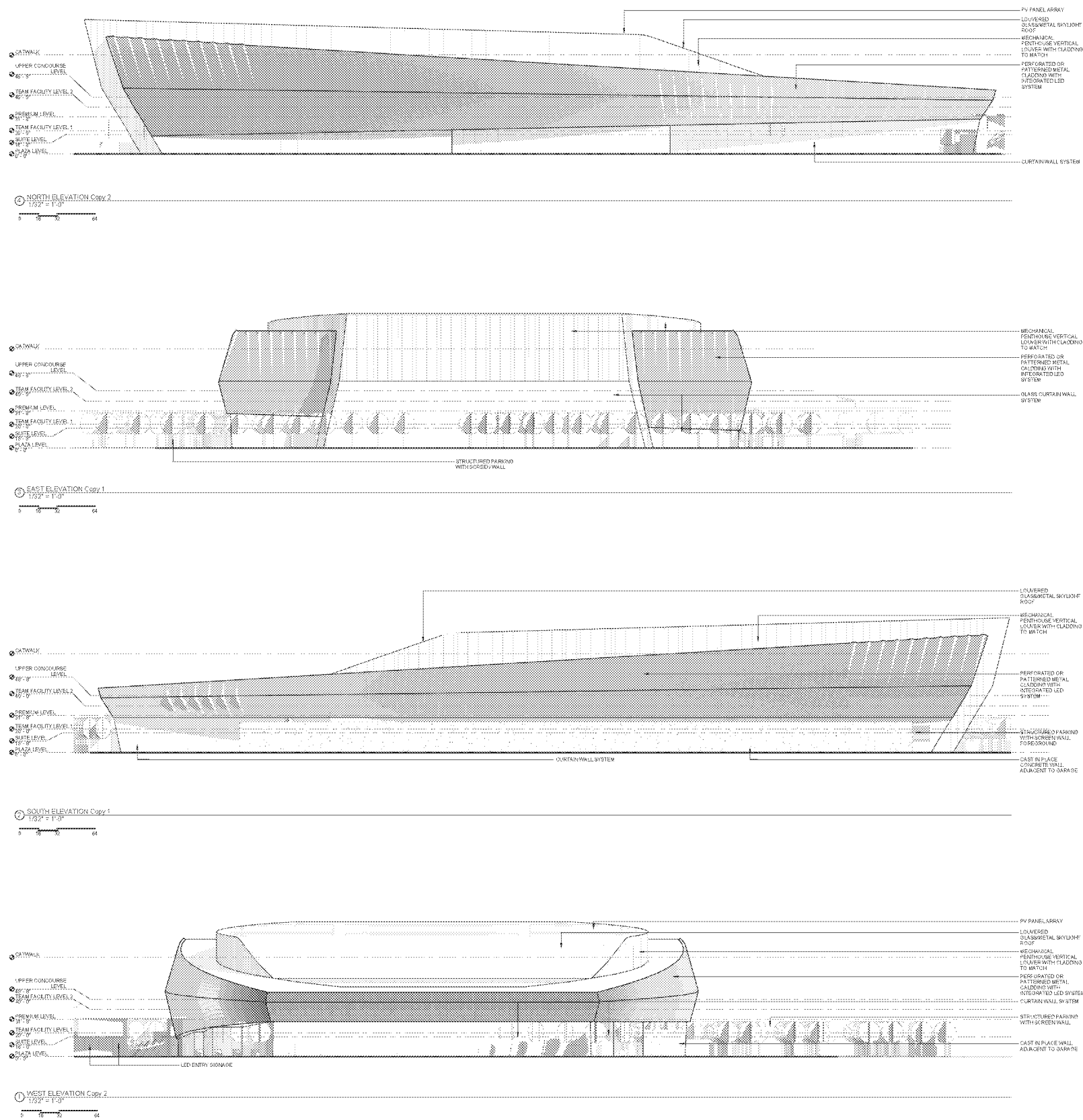
**Figure 2-14**  
Conceptual Upper Concourse Floor Plan



SOURCE: AECOM, September 2018

Ingleswood Basketball and Entertainment Center

**Figure 2-15**  
Conceptual Mechanical Floor Plan



5/17/17 09:00 - 1.4 - 03290000 - 00000000 - 00000000 - 00000000 - 00000000 - 00000000 - 00000000 - 00000000 - 00000000 - 00000000

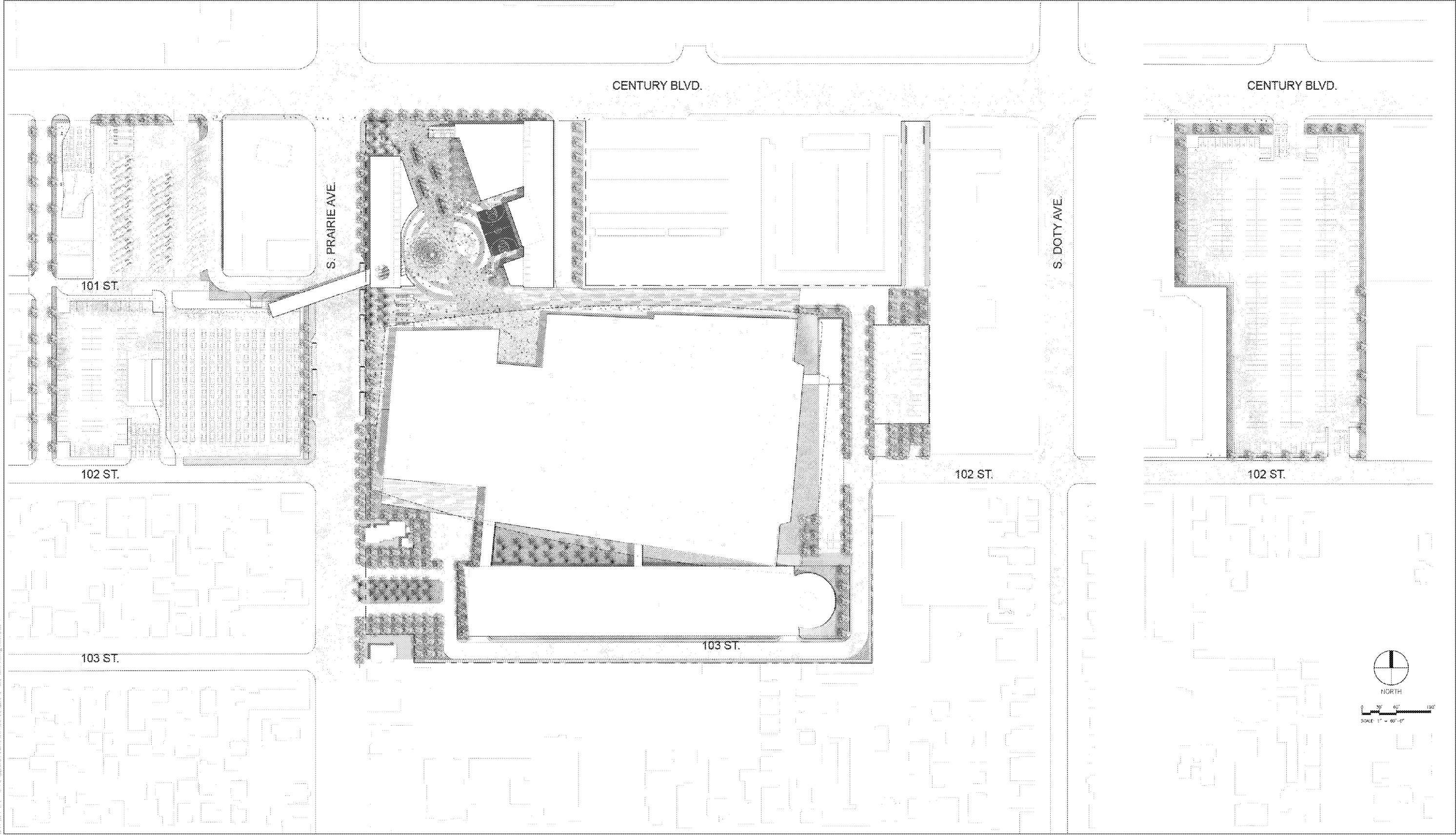
SOURCE: AECOM, September 2018

Ingleswood Basketball and Entertainment Center

**Figure 2-16**  
Conceptual Arena Building Elevations





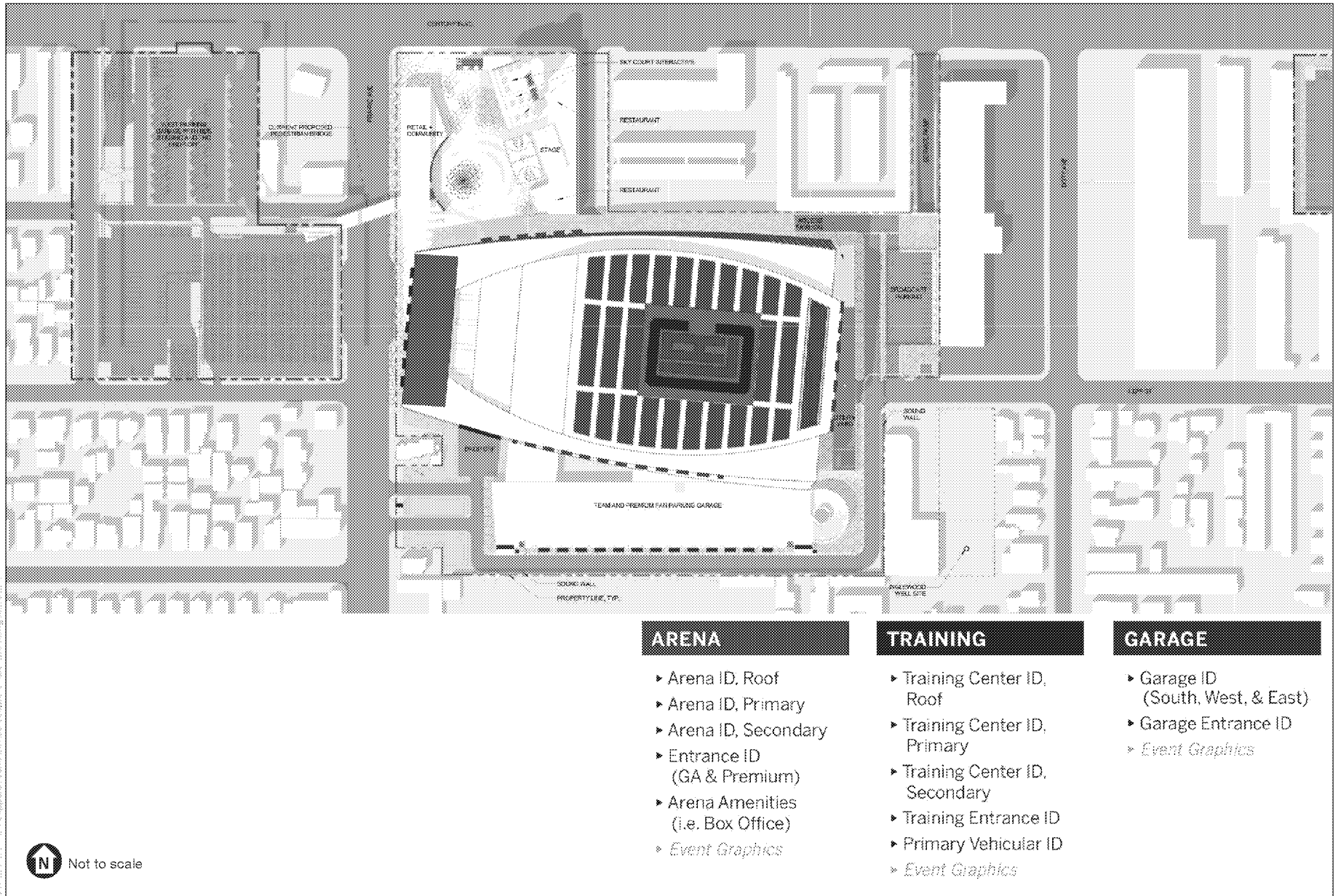


SOURCE: AECOM, September 2018

Inglewood Basketball and Entertainment Center

**Figure 2-17**  
Preliminary Landscaping Plan

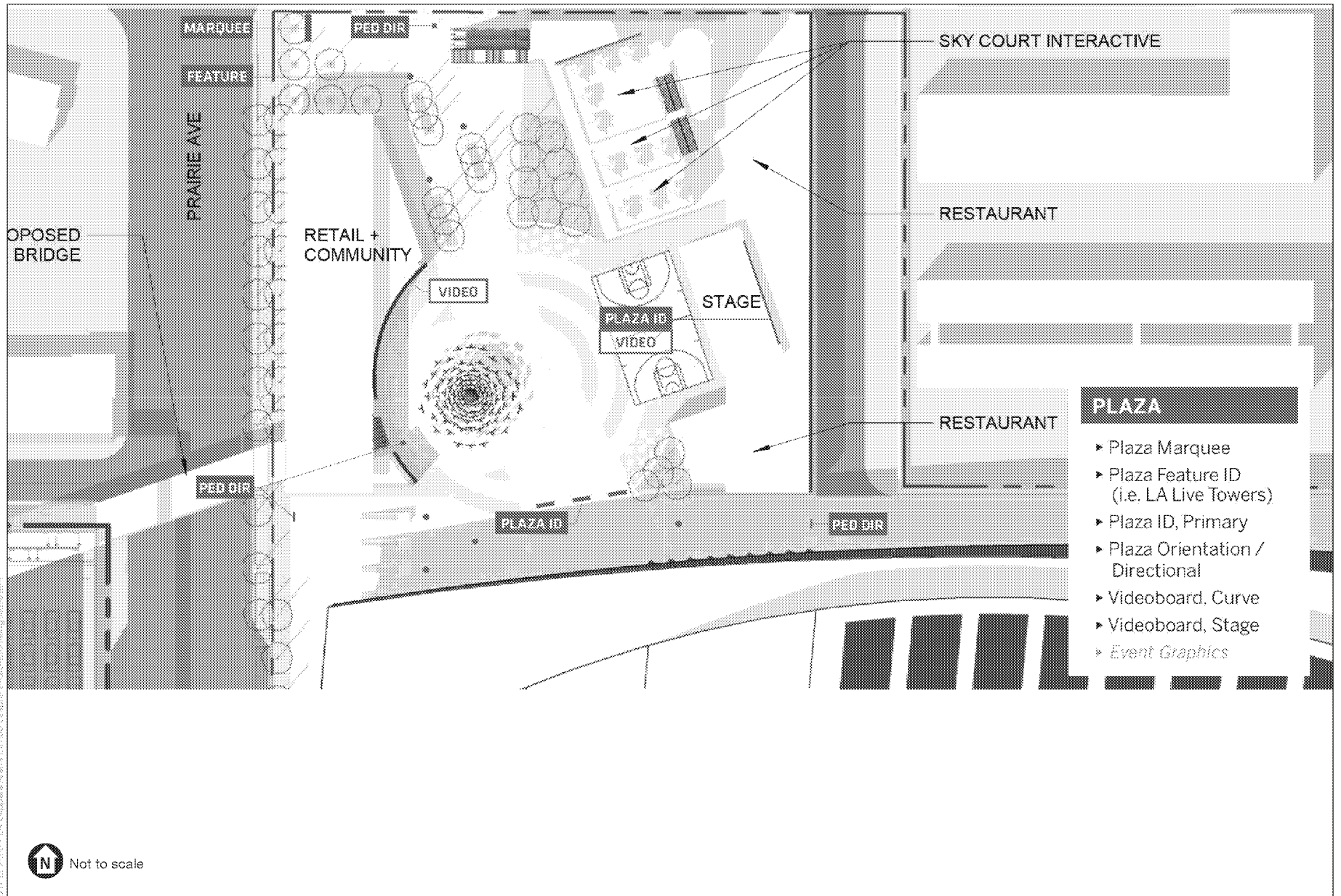




SOURCE: AECOM, September 2018

Inglewood Basketball and Entertainment Center

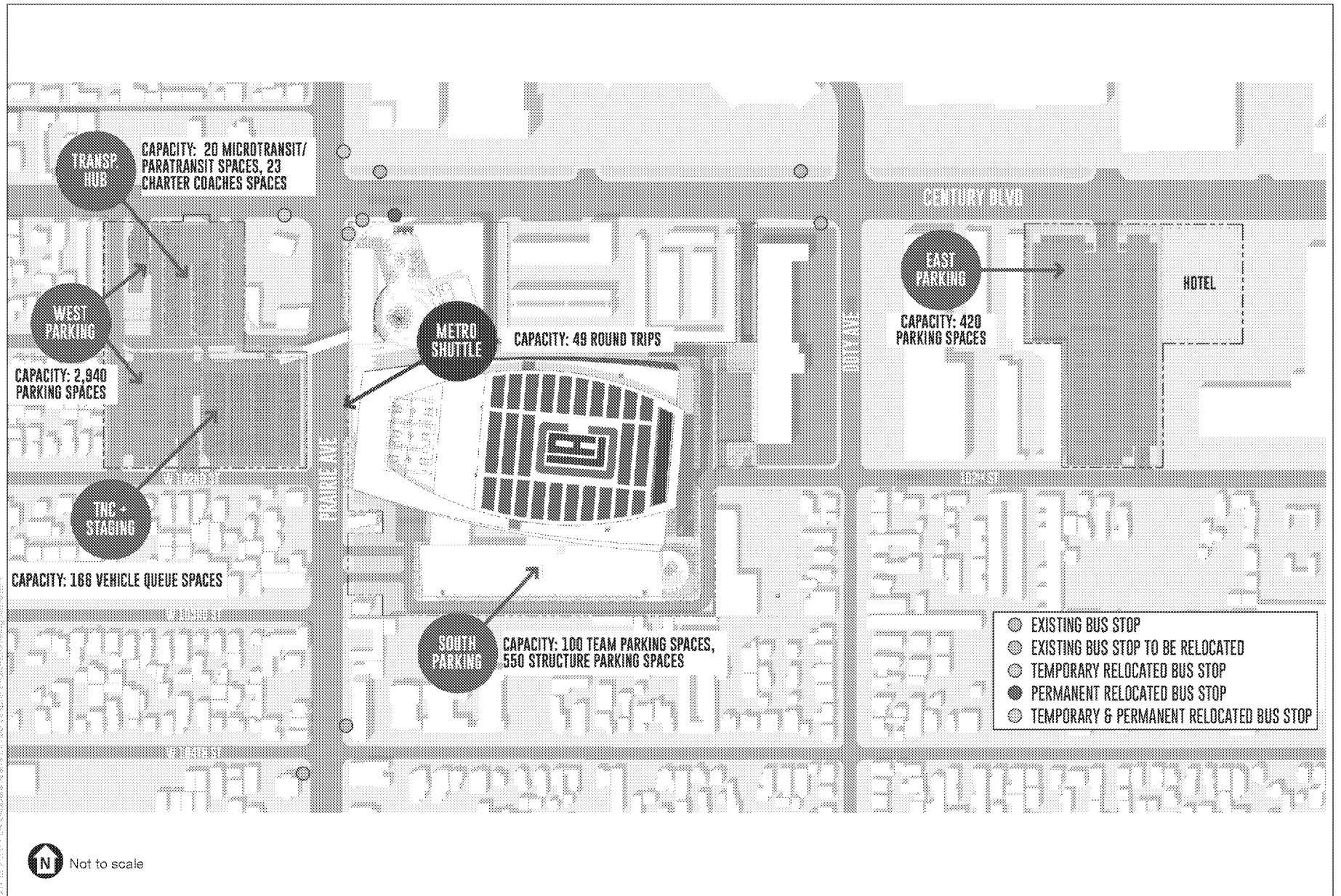
**Figure 2-18**  
Conceptual Sign Locations - Arena, Training Facility, Southern Parking Garage



SOURCE: AECOM, September 2018

Inglewood Basketball and Entertainment Center

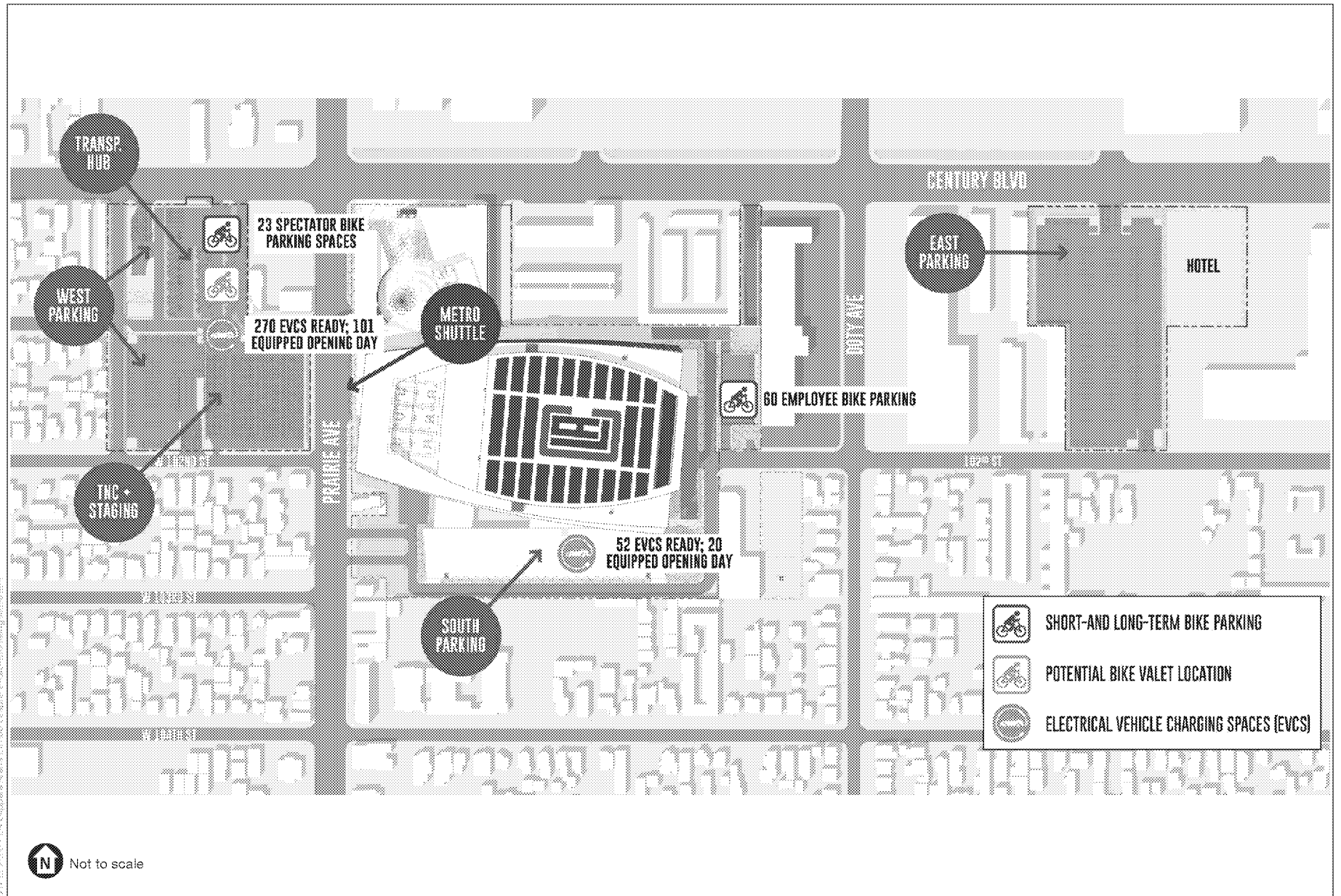
**Figure 2-19**  
Conceptual Sign Locations - Plaza



SOURCE: AECOM, September 2018

Inglewood Basketball and Entertainment Center

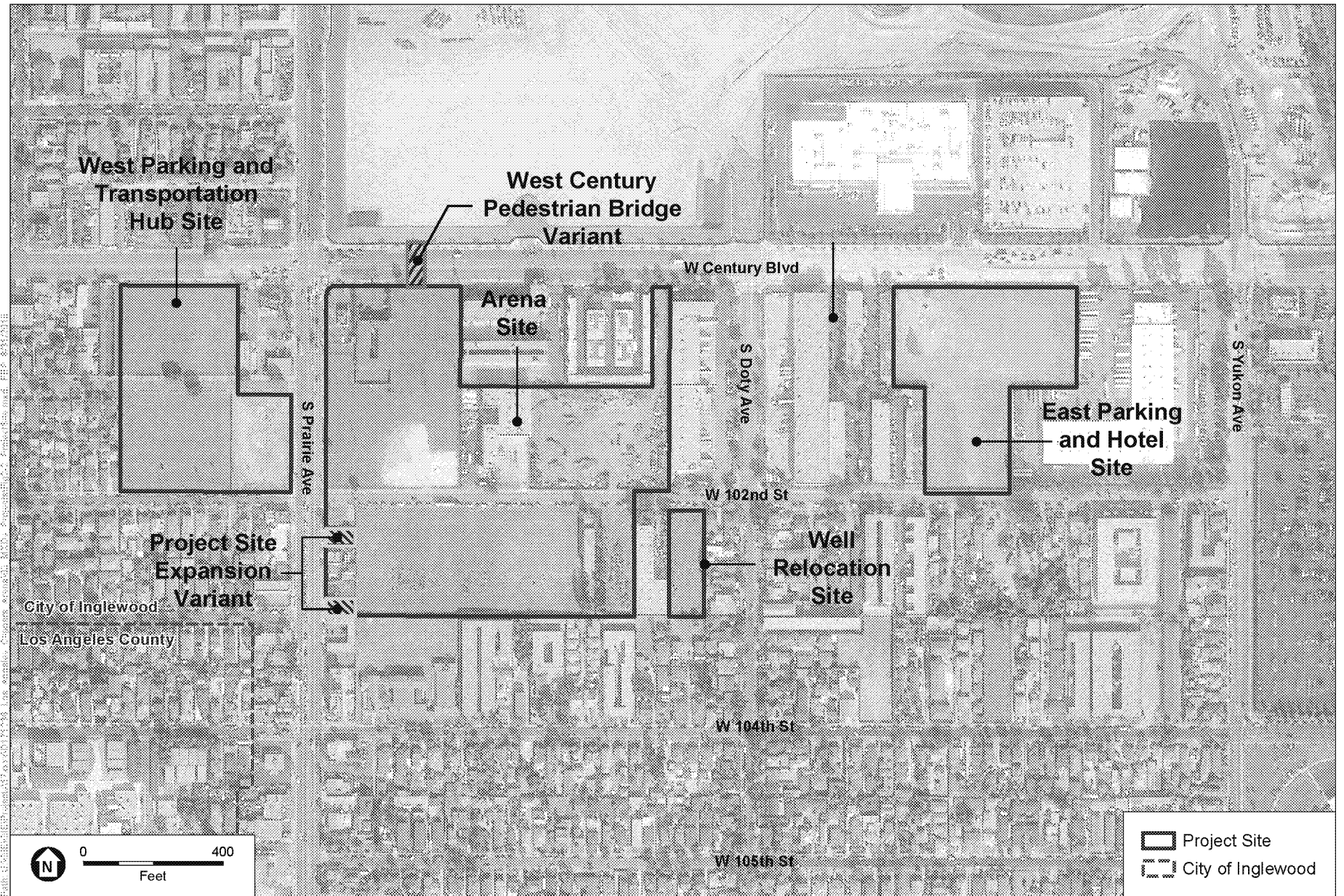
**Figure 2-20**  
Temporary and Permanent Bus Stop Relocations



SOURCE: AECOM, September 2018

Inglewood Basketball and Entertainment Center

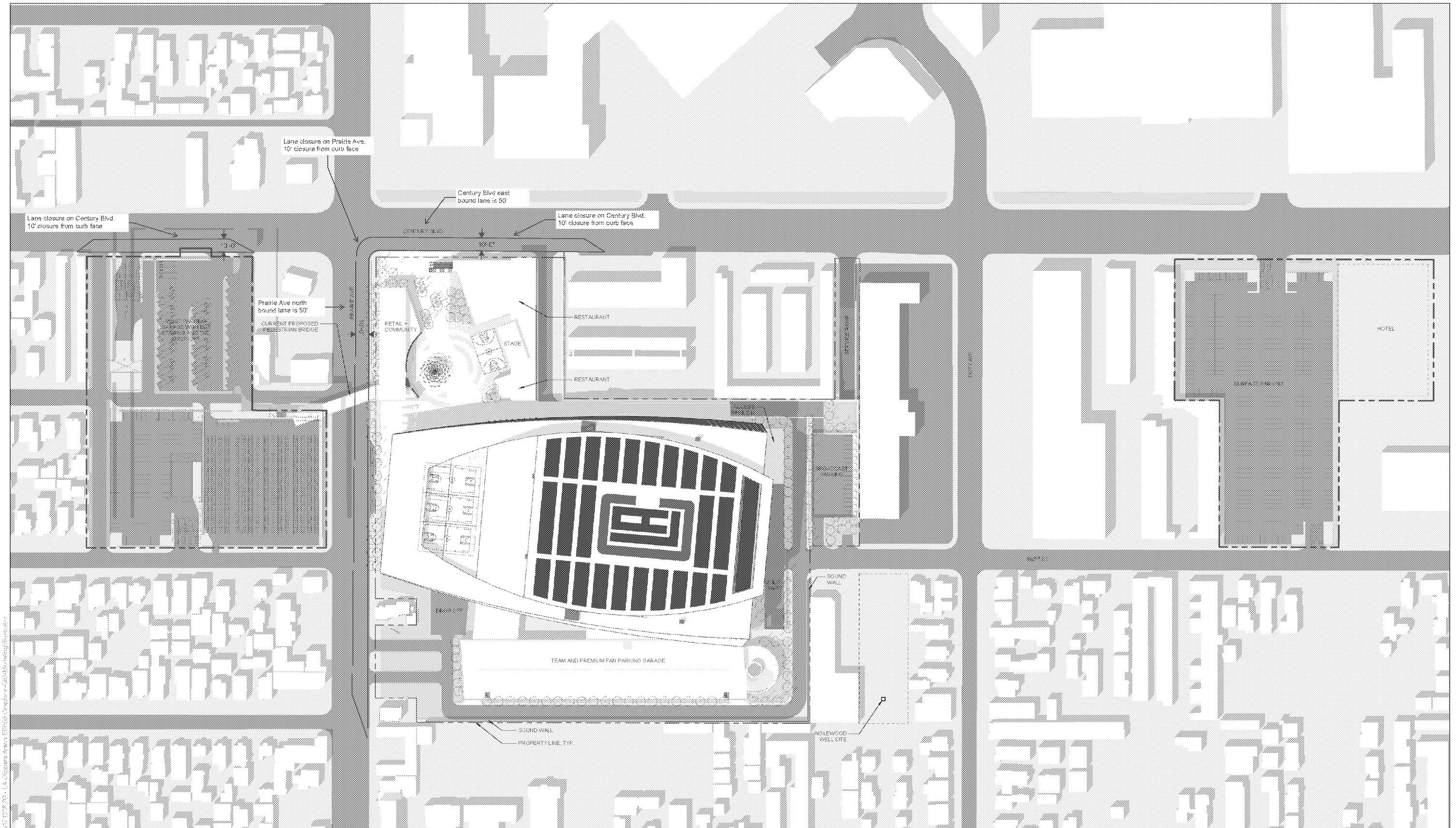
**Figure 2-21**  
Bicycle and Electric Vehicle Parking



SOURCE: TerraServer, 2018; ESA, 2019

Inglewood Basketball and Entertainment Center

**Figure 2-22**  
Project Variants



SOURCE: AECOM, September 2018

Ingleswood Basketball and Entertainment Center

**Figure 2-23**  
Construction - Lane Closures