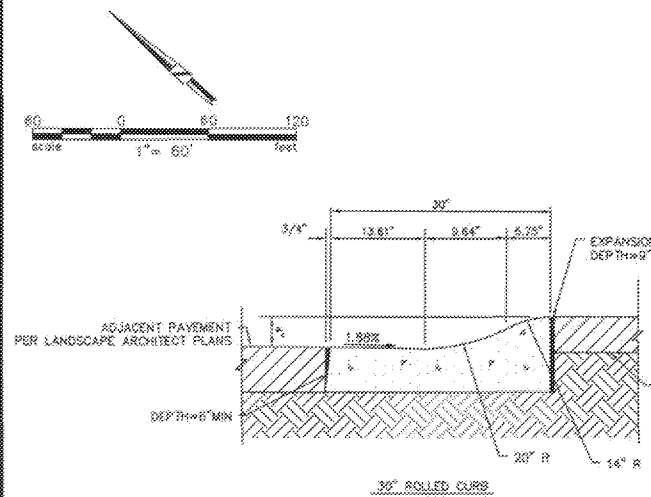
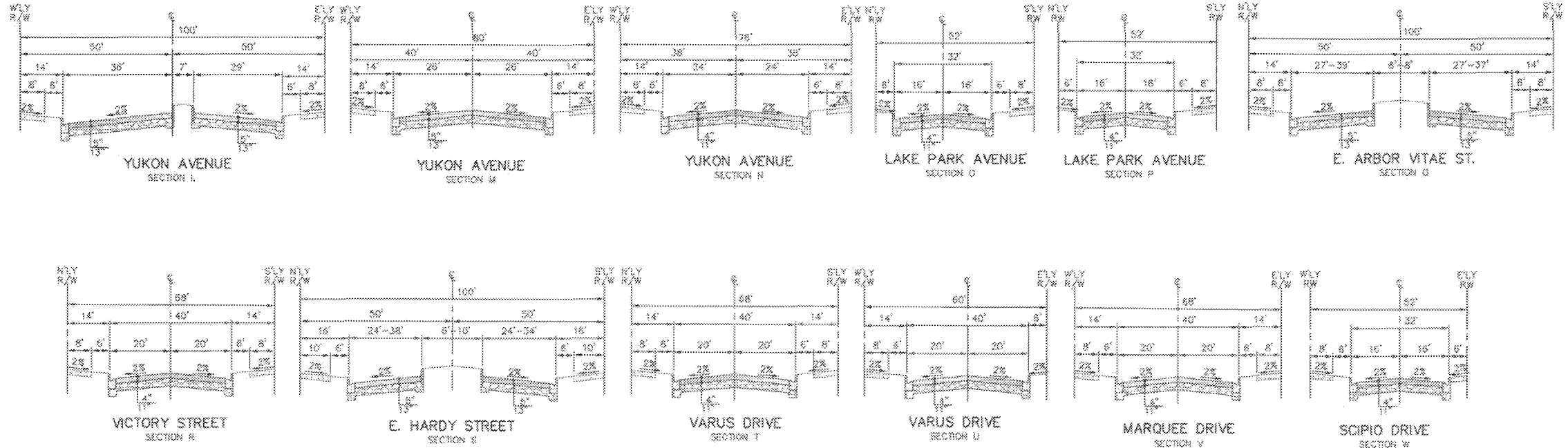
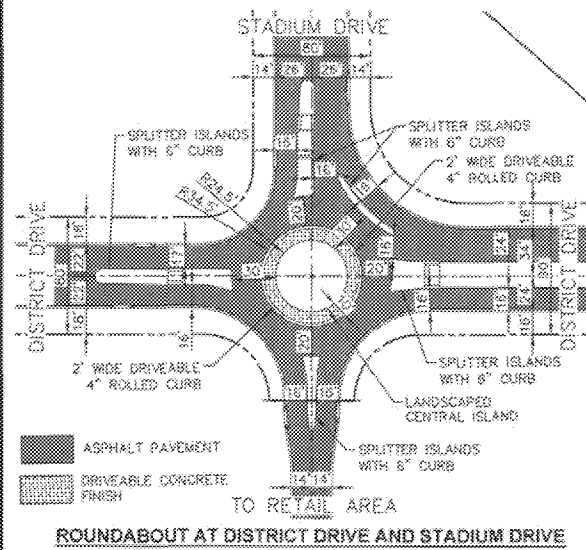
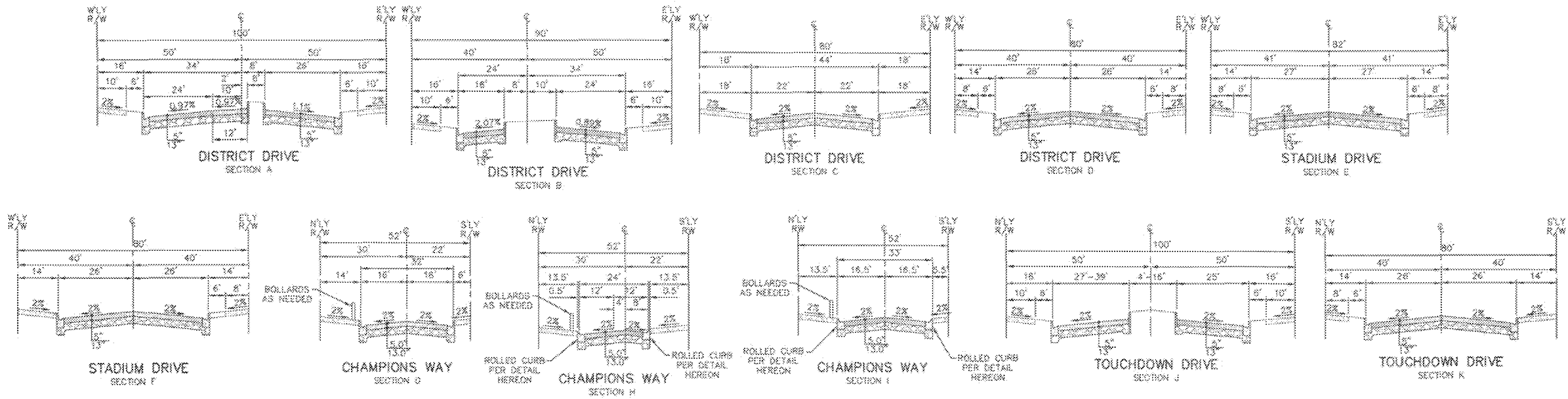
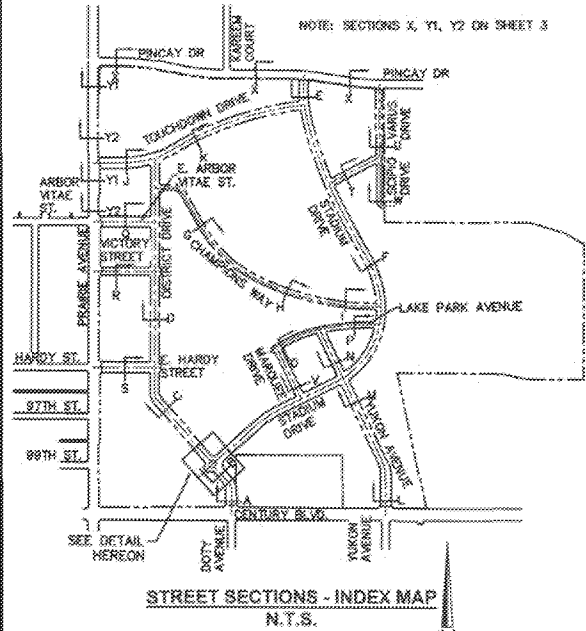


VESTING TENTATIVE TRACT MAP NO. 80314

IN THE CITY OF INGLEWOOD, CA

FOR MERGER, RESUBDIVISION AND CONDOMINIUM PURPOSES



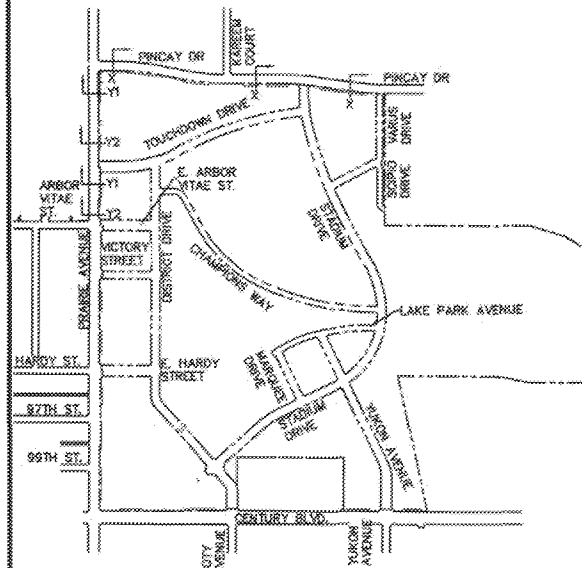
08/28/18

	DAVID EVANS AND ASSOCIATES INC. 201 S. FIDELITY STREET, SUITE 240 LOS ANGELES, CA 90012 Phone: 213.337.9990	HOLLYWOOD PARK LAND CO., LLC L.A. STADIUM AND ENTERTAINMENT DISTRICT AT HOLLYWOOD PARK	
	PREPARED UNDER THE SUPERVISION OF: KARL WALLUCK, R.E.C.E. 42529		VESTING TENTATIVE TRACT MAP MAP NO. 80314
DATE: _____		DATE: 9-18-18	
SCALE: N.T.S.		SHEET NO. 02 OF 25	

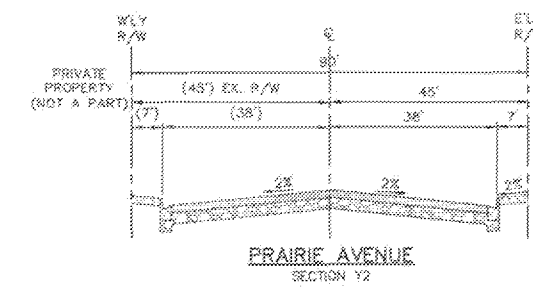
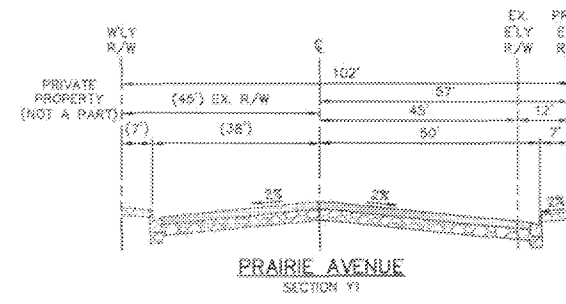
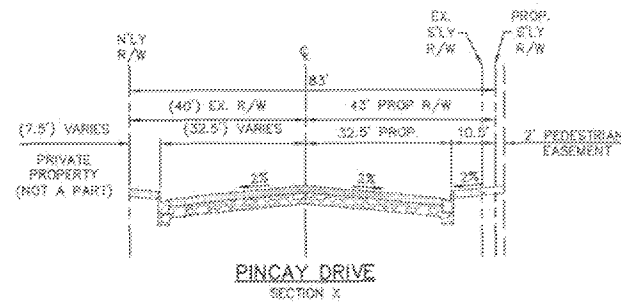
VESTING TENTATIVE TRACT MAP NO. 80314

IN THE CITY OF INGLEWOOD, CA

FOR MERGER, RESUBDIVISION AND CONDOMINIUM PURPOSES



STREET SECTIONS - INDEX MAP
N.T.S.



Parcel #	Area	Area	Land Use
LOT 1	94,770 SF	1.49 AC.	MIXED USE
LOT 2	45,000 SF	1.03 AC.	MIXED USE
LOT 3	35,034 SF	0.80 AC.	MIXED USE
LOT 4	18,200 SF	0.42 AC.	MIXED USE
LOT 5	23,629 SF	0.54 AC.	MIXED USE
LOT 6	9,791 SF	0.22 AC.	MIXED USE
LOT 7	31,911 SF	0.73 AC.	MIXED USE
LOT 8	20,394 SF	0.47 AC.	MIXED USE
LOT 9	16,800 SF	0.39 AC.	MIXED USE
LOT 10	8,000 SF	0.18 AC.	MIXED USE
LOT 11	94,580 SF	2.17 AC.	MIXED USE
LOT 12	87,021 SF	1.99 AC.	MIXED USE
LOT 13	49,646 SF	1.14 AC.	MIXED USE
LOT 14	40,722 SF	0.93 AC.	MIXED USE
LOT 15	139,080 SF	3.19 AC.	MIXED USE
LOT 16	53,469 SF	1.23 AC.	MIXED USE
LOT 17	10,748 SF	0.25 AC.	MIXED USE
LOT 18	29,550 SF	0.68 AC.	MIXED USE
LOT 19	8,237 SF	0.21 AC.	MIXED USE
LOT 20	5,906 SF	0.14 AC.	MIXED USE
LOT 21	20,157 SF	0.46 AC.	MIXED USE
LOT 22	60,021 SF	1.42 AC.	MIXED USE
LOT 23	32,354 SF	0.74 AC.	MIXED USE

Parcel #	Area	Area	Land Use
LOT 24	44,400 SF	1.02 AC.	MIXED USE
LOT 25	41,523 SF	0.95 AC.	MIXED USE
LOT 26	76,161 SF	1.75 AC.	MIXED USE
LOT 27	84,244 SF	1.93 AC.	MIXED USE
LOT 28	78,370 SF	1.79 AC.	MIXED USE
LOT 29	12,388 SF	0.28 AC.	MIXED USE
LOT 30	33,455 SF	0.77 AC.	MIXED USE
LOT 31	6,498 SF	0.15 AC.	MIXED USE
LOT 32	160,172 SF	3.68 AC.	MIXED USE
LOT 33	80,229 SF	1.84 AC.	MIXED USE
LOT 34	20,616 SF	0.47 AC.	MIXED USE
LOT 35	13,371 SF	0.31 AC.	MIXED USE
LOT 36	28,352 SF	0.65 AC.	MIXED USE
LOT 37	87,212 SF	2.00 AC.	MIXED USE
LOT 38	71,518 SF	1.64 AC.	MIXED USE
LOT 39	111,838 SF	2.57 AC.	MIXED USE
LOT 40	58,000 SF	1.33 AC.	MIXED USE
LOT 41	60,900 SF	1.40 AC.	MIXED USE
LOT 42	116,106 SF	2.67 AC.	MIXED USE
LOT 43	23,272 SF	0.53 AC.	MIXED USE
LOT 44	77,072 SF	1.77 AC.	MIXED USE
LOT 45	80,374 SF	1.85 AC.	MIXED USE
LOT 46	85,253 SF	1.96 AC.	MIXED USE

Parcel #	Area	Area	Land Use
LOT 47	54,627 SF	1.25 AC.	MIXED USE
LOT 48	58,590 SF	1.35 AC.	MIXED USE
LOT 49	56,287 SF	1.27 AC.	MIXED USE
LOT 50	42,059 SF	0.96 AC.	MIXED USE
LOT 51	71,467 SF	1.64 AC.	MIXED USE
LOT 52	41,579 SF	0.94 AC.	MIXED USE
LOT 53	24,188 SF	0.55 AC.	MIXED USE
LOT 54	28,241 SF	0.65 AC.	MIXED USE
LOT 55	27,312 SF	0.63 AC.	MIXED USE
LOT 56	46,960 SF	1.08 AC.	MIXED USE
LOT 57	26,258 SF	0.60 AC.	MIXED USE
LOT 58	28,222 SF	0.65 AC.	MIXED USE
LOT 59	28,827 SF	0.66 AC.	MIXED USE
LOT 60	28,808 SF	0.66 AC.	MIXED USE
LOT 61	29,600 SF	0.68 AC.	MIXED USE
LOT 62	22,757 SF	0.52 AC.	MIXED USE
LOT 63	28,669 SF	0.66 AC.	MIXED USE
LOT 64	19,822 SF	0.46 AC.	MIXED USE
LOT 65	98,380 SF	2.26 AC.	MIXED USE
LOT 66	32,281 SF	0.74 AC.	MIXED USE
LOT 67	35,577 SF	0.82 AC.	MIXED USE
LOT 68	30,309 SF	0.70 AC.	MIXED USE
LOT 69	34,889 SF	0.80 AC.	MIXED USE

Parcel #	Area	Area	Land Use
LOT 70	21,063 SF	0.48 AC.	MIXED USE
LOT 71	64,994 SF	1.49 AC.	MIXED USE
LOT 72	61,265 SF	1.41 AC.	MIXED USE
LOT 73	64,759 SF	1.48 AC.	MIXED USE
LOT 74	16,948 SF	0.39 AC.	MIXED USE
LOT 75	81,859 SF	1.87 AC.	MIXED USE
LOT 76	78,220 SF	1.80 AC.	MIXED USE
LOT 77	68,769 SF	1.58 AC.	MIXED USE
LOT 78	63,548 SF	1.46 AC.	MIXED USE
LOT 79	38,956 SF	0.89 AC.	MIXED USE
LOT 80	94,090 SF	2.16 AC.	MIXED USE
LOT 81	22,803 SF	0.52 AC.	MIXED USE
LOT 82	28,397 SF	0.65 AC.	MIXED USE
LOT 83	36,230 SF	0.83 AC.	MIXED USE
LOT 84	77,252 SF	1.77 AC.	MIXED USE
LOT 85	86,345 SF	1.98 AC.	MIXED USE
LOT 86	29,591 SF	0.68 AC.	MIXED USE
LOT 87	24,580 SF	0.56 AC.	RESIDENTIAL
LOT 88	28,379 SF	0.65 AC.	RESIDENTIAL
LOT 89	78,439 SF	1.80 AC.	RESIDENTIAL
LOT 90	42,770 SF	0.98 AC.	RESIDENTIAL
LOT 91	41,893 SF	0.96 AC.	RESIDENTIAL
LOT 92	11,069 SF	0.25 AC.	RESIDENTIAL

Parcel #	Area	Area	Land Use
LOT 93	8,571 SF	0.20 AC.	RESIDENTIAL
LOT 94	15,217 SF	0.35 AC.	RESIDENTIAL
LOT 95	13,082 SF	0.30 AC.	RESIDENTIAL
LOT 96	11,160 SF	0.26 AC.	RESIDENTIAL
LOT 97	21,371 SF	0.49 AC.	RESIDENTIAL
LOT 98	16,448 SF	0.38 AC.	RESIDENTIAL
LOT 99	7,126 SF	0.16 AC.	RESIDENTIAL
LOT 100	9,747 SF	0.22 AC.	RESIDENTIAL
LOT 101	21,153 SF	0.49 AC.	RESIDENTIAL
LOT 102	4,484 SF	0.10 AC.	RESIDENTIAL
LOT 103	3,357 SF	0.08 AC.	RESIDENTIAL
LOT 104	3,314 SF	0.08 AC.	RESIDENTIAL
LOT 105	3,389 SF	0.08 AC.	RESIDENTIAL
LOT 106	4,284 SF	0.10 AC.	RESIDENTIAL
LOT 107	3,249 SF	0.12 AC.	RESIDENTIAL
LOT 108	28,261 SF	0.65 AC.	RESIDENTIAL
LOT 109	3,440 SF	0.08 AC.	RESIDENTIAL
LOT 110	2,399 SF	0.06 AC.	RESIDENTIAL
LOT 111	3,035 SF	0.07 AC.	RESIDENTIAL
LOT 112	6,089 SF	0.14 AC.	RESIDENTIAL
LOT 113	3,921 SF	0.09 AC.	RESIDENTIAL
LOT 114	2,911 SF	0.07 AC.	RESIDENTIAL
LOT 115	2,334 SF	0.05 AC.	RESIDENTIAL

Parcel #	Area	Area	Land Use
LOT 116	3,702 SF	0.08 AC.	RESIDENTIAL
LOT 117	3,063 SF	0.07 AC.	RESIDENTIAL
LOT 118	3,586 SF	0.08 AC.	RESIDENTIAL
LOT 119	3,309 SF	0.08 AC.	RESIDENTIAL
LOT 120	3,089 SF	0.07 AC.	RESIDENTIAL
LOT 121	2,713 SF	0.06 AC.	RESIDENTIAL
LOT 122	3,480 SF	0.08 AC.	RESIDENTIAL
LOT 123	3,463 SF	0.08 AC.	RESIDENTIAL
LOT 124	2,916 SF	0.07 AC.	RESIDENTIAL
LOT 125	3,485 SF	0.08 AC.	RESIDENTIAL
LOT 126	4,315 SF	0.10 AC.	RESIDENTIAL
LOT 127	4,296 SF	0.10 AC.	RESIDENTIAL
LOT 128	3,486 SF	0.08 AC.	RESIDENTIAL
LOT 129	11,840 SF	0.27 AC.	RESIDENTIAL
LOT 130	10,969 SF	0.25 AC.	RESIDENTIAL
LOT 131	17,910 SF	0.41 AC.	RESIDENTIAL
LOT 132	6,641 SF	0.15 AC.	RESIDENTIAL
LOT 133	5,046 SF	0.12 AC.	RESIDENTIAL
LOT 134	8,963 SF	0.21 AC.	RESIDENTIAL
LOT 135	9,674 SF	0.22 AC.	RESIDENTIAL
LOT 136	55,927 SF	1.28 AC.	RESIDENTIAL
LOT 137	53,160 SF	1.22 AC.	RESIDENTIAL
LOT 138	5,192 SF	0.12 AC.	RESIDENTIAL

Parcel #	Area	Area	Land Use
LOT 139	4,259 SF	0.10 AC.	RESIDENTIAL
LOT 140	4,451 SF	0.10 AC.	RESIDENTIAL
LOT 141	5,071 SF	0.12 AC.	RESIDENTIAL
LOT 142	12,861 SF	0.41 AC.	RESIDENTIAL
LOT 143	20,437 SF	0.47 AC.	RESIDENTIAL
LOT 144	18,239 SF	0.42 AC.	RESIDENTIAL
LOT 145	5,033 SF	0.12 AC.	RESIDENTIAL
LOT 146	8,184 SF	0.19 AC.	RESIDENTIAL
LOT 147	4,244 SF	0.10 AC.	RESIDENTIAL
LOT 148	3,623 SF	0.08 AC.	RESIDENTIAL
LOT 149	5,102 SF	0.12 AC.	RESIDENTIAL
LOT 150	18,173 SF	0.42 AC.	RESIDENTIAL
LOT 151	58,038 SF	1.33 AC.	RESIDENTIAL
LOT 152	20,808 SF	0.48 AC.	RESIDENTIAL
LOT 153	41,911 SF	0.96 AC.	RESIDENTIAL
LOT 154	42,474 SF	0.97 AC.	RESIDENTIAL
LOT 155	34,076 SF	0.78 AC.	RESIDENTIAL
LOT 156	31,254 SF	0.72 AC.	MIXED USE
LOT 157	58,812 SF	1.34 AC.	RESIDENTIAL
LOT 158	52,016 SF	1.19 AC.	MIXED USE
LOT 159	11,581 SF	0.27 AC.	MIXED USE
LOT 160	8,943 SF	0.21 AC.	RESIDENTIAL
LOT 161	4,921 SF	0.11 AC.	RESIDENTIAL

PROPOSED LOT SIZE TABLES

Parcel #	Area	Area	Land Use
LOT 162	5,536 SF	0.13 AC.	RESIDENTIAL
LOT 163	7,438 SF	0.17 AC.	RESIDENTIAL
LOT 164	4,094 SF	0.09 AC.	RESIDENTIAL
LOT 165	4,124 SF	0.09 AC.	RESIDENTIAL
LOT 166	3,000 SF	0.07 AC.	RESIDENTIAL
LOT 167	3,000 SF	0.07 AC.	RESIDENTIAL
LOT 168	4,624 SF	0.11 AC.	RESIDENTIAL
LOT 169	4,125 SF	0.09 AC.	RESIDENTIAL
LOT 170	3,000 SF	0.07 AC.	RESIDENTIAL
LOT 171	3,000 SF	0.07 AC.	RESIDENTIAL
LOT 172	4,844 SF	0.11 AC.	RESIDENTIAL
LOT 173	4,125 SF	0.09 AC.	RESIDENTIAL
LOT 174	3,000 SF	0.07 AC.	RESIDENTIAL
LOT 175	3,000 SF	0.07 AC.	RESIDENTIAL
LOT 176	4,964 SF	0.11 AC.	RESIDENTIAL
LOT 177	4,125 SF	0.09 AC.	RESIDENTIAL
LOT 178	3,000 SF	0.07 AC.	RESIDENTIAL
LOT 179	3,000 SF	0.07 AC.	RESIDENTIAL
LOT 180	4,884 SF	0.11 AC.	RESIDENTIAL
LOT 181	4,125 SF	0.09 AC.	RESIDENTIAL
LOT 182	3,000 SF	0.07 AC.	RESIDENTIAL
LOT 183	3,000 SF	0.07 AC.	RESIDENTIAL
LOT 184	4,904 SF	0.11 AC.	RESIDENTIAL

Parcel #	Area	Area	Land Use
LOT 185	4,125 SF	0.09 AC.	RESIDENTIAL
LOT 186	3,000 SF	0.07 AC.	RESIDENTIAL
LOT 187	3,000 SF	0.07 AC.	RESIDENTIAL
LOT 188	4,927 SF	0.11 AC.	RESIDENTIAL
LOT 189	4,100 SF	0.10 AC.	RESIDENTIAL
LOT 190	3,000 SF	0.07 AC.	RESIDENTIAL
LOT 191	3,000 SF	0.07 AC.	RESIDENTIAL
LOT 192	5,385 SF	0.12 AC.	RESIDENTIAL
LOT 193	8,951 SF	0.21 AC.	RESIDENTIAL
LOT 194	3,960 SF	0.09 AC.	RESIDENTIAL
LOT 195	3,960 SF	0.09 AC.	RESIDENTIAL
LOT 196	5,004 SF	0.12 AC.	RESIDENTIAL
LOT 197	18,934 SF	0.43 AC.	RESIDENTIAL
LOT 198	21,817 SF	0.50 AC.	RESIDENTIAL
LOT 199	24,329 SF	0.56 AC.	RESIDENTIAL
LOT 200	26,598 SF	0.61 AC.	RESIDENTIAL
LOT 201	12,007 SF	0.28 AC.	RESIDENTIAL
LOT 202	51,214 SF	1.18 AC.	RESIDENTIAL
LOT 203	13,454 SF	0.31 AC.	RESIDENTIAL
LOT 204	23,846 SF	0.55 AC.	RESIDENTIAL
LOT 205	47,859 SF	1.09 AC.	MIXED USE
LOT 206	26,188 SF	0.60 AC.	MIXED USE
LOT 207	14,229 SF	0.33 AC.	RESIDENTIAL

Parcel #	Area	Area	Land Use
LOT 208	22,457 SF	0.52 AC.	INTERIM USE
LOT 209	421,756 SF	9.68 AC.	INTERIM USE
LOT 210	178,937 SF	4.06 AC.	INTERIM USE
LOT 211	456,365 SF	10.39 AC.	INTERIM USE
LOT 212	301,974 SF	6.93 AC.	INTERIM USE
LOT 213	207,169 SF	4.76 AC.	INTERIM USE
LOT 214	1,907,821 SF	43.80 AC.	SPORTS AND ENTERTAINMENT
LOT A	517,737 SF	11.88 AC.	OPEN SPACE
LOT B	49,335 SF	1.04 AC.	OPEN SPACE
LOT C	30,861 SF	0.70 AC.	OPEN SPACE
LOT D	32,774 SF	0.75 AC.	OPEN SPACE
LOT E	480,340 SF	10.97 AC.	OPEN SPACE
LOT F	17,205 SF	0.39 AC.	OPEN SPACE
LOT G	94,993 SF	2.18 AC.	PRIVATE ROAD
LOT H	306,898 SF	7.09 AC.	PRIVATE ROAD
LOT J	27,478 SF	0.63 AC.	PRIVATE ROAD
LOT K	14,525 SF	0.33 AC.	PRIVATE ROAD
LOT L	4,478 SF	0.10 AC.	PRIVATE ROAD
LOT M	4,476 SF	0.10 AC.	PRIVATE ROAD
LOT N	4,476 SF	0.10 AC.	PRIVATE ROAD
LOT P	4,468 SF	0.10 AC.	PRIVATE ROAD

Parcel #	Volume	Location
LOT 214-A	13,627,632 CF	PERFORMANCE VENUE
LOT 214-B	2,976,850 CF	STADIUM DRIVE
LOT 214-C	710,581 CF	CHAMPIONS WAY
LOT 214-D	2,405,498 CF	TOUCHDOWN DRIVE

PROPOSED AIRSPACE LOT SIZE TABLES



DAVID EVANS AND ASSOCIATES INC.
201 S. FIGUEROA STREET, SUITE 240
LOS ANGELES, CA 90012
Phone: 213 337 3880

PREPARED UNDER THE SUPERVISION OF:

KARL WALLUCK, P.E. #22529

HOLLYWOOD PARK LAND CO., LLC		L.A. STADIUM AND ENTERTAINMENT DISTRICT	
AT HOLLYWOOD PARK		VESTING TENTATIVE TRACT MAP	
MAP NO. 80314		SCALE: N.T.S.	
DESIGNED BY: LR	DATE: 08/28/18	CHECKED BY: KM	DATE: 9-12-18
APPROVED BY: [Signature]	DATE: 9-12-18	03 of 25	

VESTING TENTATIVE TRACT MAP NO. 80314

IN THE CITY OF INGLEWOOD, CA

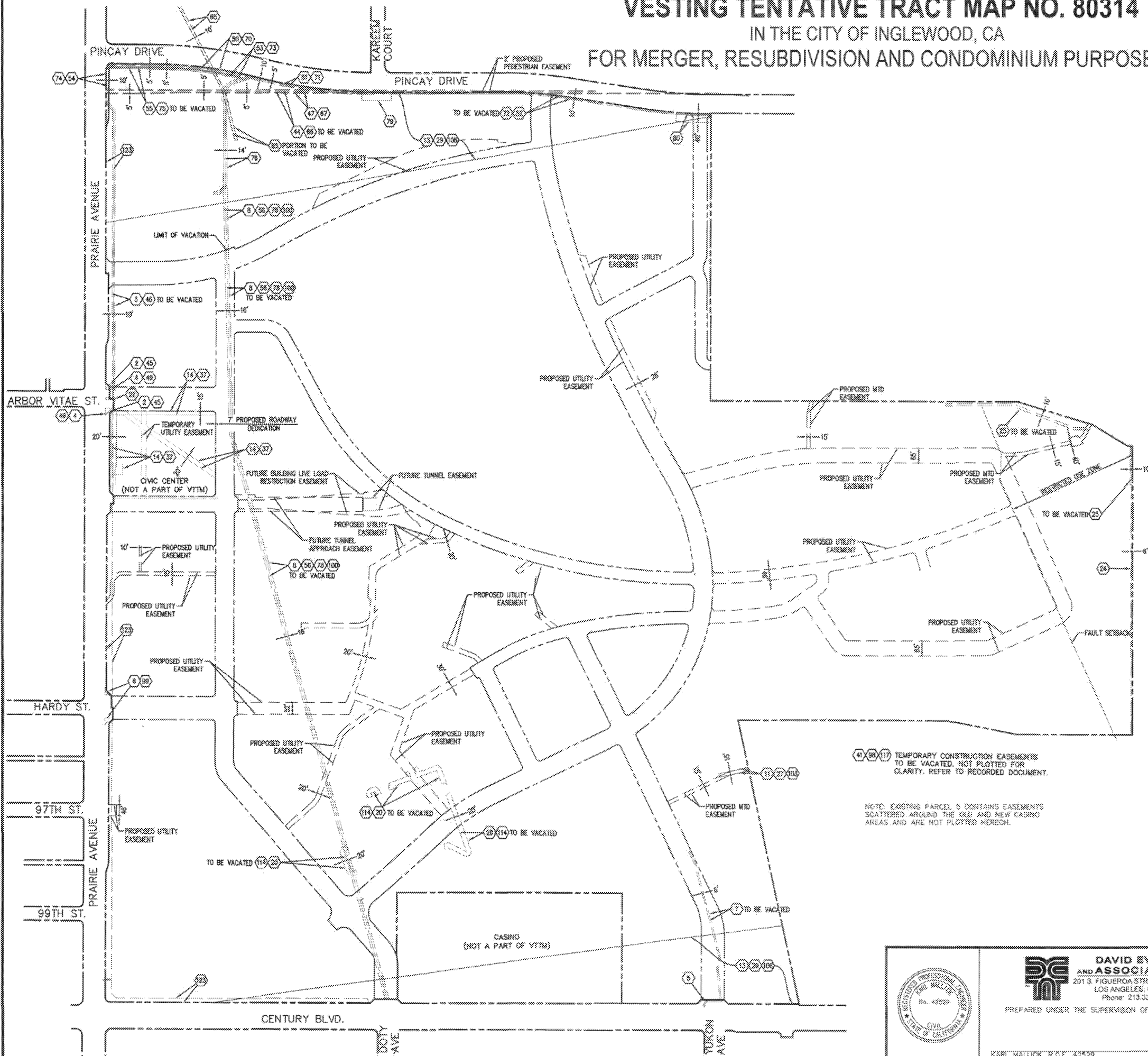
FOR MERGER, RESUBDIVISION AND CONDOMINIUM PURPOSES

EASEMENTS OF RECORD
 NUMBERING PER FIDELITY NATIONAL TITLE COMPANY PRELIMINARY TITLE REPORT NO. 996-25002498-A-MLS
 DATE: MARCH 5, 2016

1. NOT USED
2. EASEMENT(S) FOR THE PURPOSE(S) SHOWN BELOW AND RIGHTS INCIDENTAL THERETO, AS GRANTED IN A DOCUMENT:
 GRANTED TO: THE CITY OF INGLEWOOD
 PURPOSE: TRAFFIC CONTROL SIGNALS
 RECORDED: JANUARY 13, 1948, INSTRUMENT NO. 1590, BOOK 2816G, PAGE 306 OF OFFICIAL RECORDS
 AFFECTS: A PORTION OF PARCEL 1 AS MORE PARTICULARLY DESCRIBED THEREIN
3. EASEMENT(S) FOR THE PURPOSE(S) SHOWN BELOW AND RIGHTS INCIDENTAL THERETO, AS GRANTED IN A DOCUMENT:
 GRANTED TO: L.A. COUNTY SANITATION DISTRICT NO. 5
 PURPOSE: SEWER
 RECORDED: APRIL 10, 1951, INSTRUMENT NO. 3434, BOOK 3501S, PAGE 410 OF OFFICIAL RECORDS
 AFFECTS: A PORTION OF PARCEL 1 AS MORE PARTICULARLY DESCRIBED THEREIN
 A PORTION OF SAID EASEMENT HAS BEEN OUTCLAIMED BY DEED RECORDED NOVEMBER 08, 2016 AS INSTRUMENT NO. 20161391419 OF OFFICIAL RECORDS.
- MATTERS CONTAINED IN THAT CERTAIN DOCUMENT ENTITLED "SEWER ABANDONMENT AGREEMENT", EXECUTED BY AND BETWEEN COUNTY SANITATION DISTRICT NO. 5 OF LOS ANGELES COUNTY AND HOLLYWOOD PARK RESIDENTIAL INVESTORS, L.L.C. AND PINCAY RE, L.L.C. RECORDED MARCH 21, 2017, INSTRUMENT NO. 2017-0316734 OF OFFICIAL RECORDS
4. EASEMENT(S) FOR THE PURPOSE(S) SHOWN BELOW AND RIGHTS INCIDENTAL THERETO, AS GRANTED IN A DOCUMENT:
 GRANTED TO: THE CITY OF INGLEWOOD
 PURPOSE: TRAFFIC CONTROL SIGNALS
 RECORDED: SEPTEMBER 26, 1980, INSTRUMENT NO. 2813, BOOK D-886, PAGE 145 OF OFFICIAL RECORDS
 AFFECTS: A PORTION OF PARCEL 1 AS MORE PARTICULARLY DESCRIBED THEREIN
5. EASEMENT(S) FOR THE PURPOSE(S) SHOWN BELOW AND RIGHTS INCIDENTAL THERETO, AS GRANTED IN A DOCUMENT:
 GRANTED TO: PACIFIC TELEPHONE AND TELEGRAPH COMPANY
 PURPOSE: CABLES, CONDUITS, MANHOLES, MARKERS AND NECESSARY FIXTURES AND APPURTENANCES
 RECORDED: JANUARY 20, 1951, INSTRUMENT NO. 4602, BOOK D-1099, PAGE 598 OF OFFICIAL RECORDS
 AFFECTS: A PORTION OF PARCEL 2 AS MORE PARTICULARLY DESCRIBED THEREIN
6. EASEMENT(S) FOR THE PURPOSE(S) SHOWN BELOW AND RIGHTS INCIDENTAL THERETO, AS GRANTED IN A DOCUMENT:
 GRANTED TO: THE CITY OF INGLEWOOD
 PURPOSE: TRAFFIC CONTROL SIGNALS, DEVICES AND FACILITIES FOR THE CONTROL, DIRECTION AND REGULATION OF PEDESTRIAN AND VEHICULAR TRAFFIC
 RECORDED: MARCH 21, 1963, INSTRUMENT NO. 4622, BOOK D-1982, PAGE 75 OF OFFICIAL RECORDS
 AFFECTS: A PORTION OF PARCEL 1 AS MORE PARTICULARLY DESCRIBED THEREIN
7. EASEMENT(S) FOR THE PURPOSE(S) SHOWN BELOW AND RIGHTS INCIDENTAL THERETO, AS GRANTED IN A DOCUMENT:
 GRANTED TO: SOUTHERN CALIFORNIA EDISON COMPANY
 PURPOSE: WIRES, UNDERGROUND CONDUITS, CABLES, VAULTS, MANHOLES, AND INCLUDING ABOVE-GROUND ENCLOSURES, MARKERS AND CONCRETE PADS AND OTHER APPURTENANT FIXTURES
 RECORDED: MARCH 01, 1972, INSTRUMENT NO. 4967, BOOK D-5373, PAGE 907 OF OFFICIAL RECORDS
 AFFECTS: A PORTION OF PARCEL 1 AS MORE PARTICULARLY DESCRIBED THEREIN
8. EASEMENT(S) FOR THE PURPOSE(S) SHOWN BELOW AND RIGHTS INCIDENTAL THERETO, AS GRANTED IN A DOCUMENT:
 GRANTED TO: L.A. COUNTY FLOOD CONTROL DISTRICT
 PURPOSE: COVERED STORM DRAIN
 RECORDED: NOVEMBER 30, 1978, INSTRUMENT NO. 3581, BOOK D-7338, PAGE 142 OF OFFICIAL RECORDS
 AFFECTS: A PORTION OF PARCEL 1 AS MORE PARTICULARLY DESCRIBED THEREIN
11. MATTERS CONTAINED IN THAT CERTAIN DOCUMENT ENTITLED "STORM DRAIN AGREEMENT" DATED OCTOBER 16, 2000, EXECUTED BY AND BETWEEN HOME DEPOT U.S.A., INC., A DELAWARE CORPORATION, AND TARGET CORPORATION, A MINNESOTA CORPORATION RECORDED OCTOBER 20, 2000, INSTRUMENT NO. 00-1643133 OF OFFICIAL RECORDS
13. AN IRREVOCABLE OFFER TO DEDICATE AN EASEMENT OVER A PORTION OF SAID LAND FOR AVIGATION:
 RECORDED: JULY 07, 2009, INSTRUMENT NO. 20091018044 OF OFFICIAL RECORDS
 AFFECTS: THOSE PORTIONS OF PARCELS 2 AND 3 AS MORE PARTICULARLY DESCRIBED THEREIN
14. MATTERS CONTAINED IN THAT CERTAIN DOCUMENT ENTITLED "GRANT DEED AND IRREVOCABLE OFFER OF DEDICATION" DATED JUNE 23, 2010, AS INSTRUMENT NO. 2010088821 OF OFFICIAL RECORDS, AMONG OTHER THINGS, SAID DOCUMENT PROVIDES VARIOUS RESERVED EASEMENTS IN FAVOR OF GRANTOR, AND A CONSTRUCTION AND SLOPE EASEMENT IN FAVOR OF THE CITY OF INGLEWOOD. THE CITY EASEMENT AFFECTS THAT PORTION OF PARCEL 1 AS MORE PARTICULARLY DESCRIBED THEREIN
20. MATTERS CONTAINED IN THAT CERTAIN DOCUMENT ENTITLED "CARD CLUB ENCROACHMENT EASEMENT AGREEMENT" DATED JUNE 04, 2014, EXECUTED BY AND BETWEEN HOLLYWOOD PARK RESIDENTIAL INVESTORS, L.L.C. A DELAWARE LIMITED LIABILITY COMPANY, HOLLYWOOD PARK RETAIL/COMMERCIAL INVESTORS, L.L.C. A DELAWARE LIMITED LIABILITY COMPANY, AND HOLLYWOOD PARK CARD CLUB INVESTORS, L.L.C. A DELAWARE LIMITED LIABILITY COMPANY, RECORDED JUNE 05, 2014, INSTRUMENT NO. 2014082862 OF OFFICIAL RECORDS
21. EASEMENT(S) FOR THE PURPOSE(S) SHOWN BELOW AND RIGHTS INCIDENTAL THERETO, AS GRANTED IN A DOCUMENT:
 GRANTED TO: SOUTHERN CALIFORNIA EDISON COMPANY
 PURPOSE: UNDERGROUND ELECTRICAL SUPPLY SYSTEMS AND COMMUNICATION SYSTEMS
 RECORDED: MARCH 31, 2015, INSTRUMENT NO. 2015048911 OF OFFICIAL RECORDS
 AFFECTS: A PORTION OF PARCELS 2 AND 3 AS MORE PARTICULARLY DESCRIBED THEREIN
22. EASEMENT(S) FOR THE PURPOSE(S) SHOWN BELOW AND RIGHTS INCIDENTAL THERETO, AS GRANTED IN A DOCUMENT:
 GRANTED TO: COUNTY SANITATION DISTRICT NO. 5 OF LOS ANGELES COUNTY
 PURPOSE: SEWER
 RECORDED: JULY 06, 2016, INSTRUMENT NO. 20160781187 OF OFFICIAL RECORDS
 AFFECTS: A PORTION OF PARCEL 1 AS MORE PARTICULARLY DESCRIBED THEREIN

SEE NEXT SHEET FOR CONTINUATION

08/28/18



NOTE: EXISTING PARCEL 5 CONTAINS EASEMENTS SCATTERED AROUND THE OLD AND NEW CASINO AREAS AND ARE NOT PLOTTED HEREON.

14, 15, 16, 17 TEMPORARY CONSTRUCTION EASEMENTS TO BE VACATED, NOT PLOTTED FOR CLARITY. REFER TO RECORDED DOCUMENT.



DAVID EVANS AND ASSOCIATES, INC.
 201 S FIGUEROA STREET, SUITE 240
 LOS ANGELES, CA 90012
 Phone: 213.337.3880

PREPARED UNDER THE SUPERVISION OF:
 KARL WALLICK, R.C.E. 43529

HOLLYWOOD PARK LAND CO., LLC		L.A. STADIUM AND ENTERTAINMENT DISTRICT	
AT HOLLYWOOD PARK		VESTING TENTATIVE TRACT MAP	
MAP NO. 80314		EASEMENTS	
DRAWN BY: LP	DESIGNED BY: KJM	APPROVED BY: <i>[Signature]</i>	SCALE: N.T.S.
ORDERED BY: KJM	DATE: 9-18-18	DATE: 08/28/18	SHEET NO.:
		04 of 25	

VESTING TENTATIVE TRACT MAP NO. 80314 IN THE CITY OF INGLEWOOD, CA FOR MERGER, RESUBDIVISION AND CONDOMINIUM PURPOSES

EASEMENTS OF RECORD (CONT.)

NUMBERING PER FIDELITY NATIONAL TITLE COMPANY PRELIMINARY TITLE REPORT NO. 986-25002488-A-4612
DATE: MARCH 5, 2016

24. EASEMENT(S) FOR THE PURPOSE(S) SHOWN BELOW AND RIGHTS INCIDENTAL THERETO, AS GRANTED IN A DOCUMENT:
GRANTED TO: SOUTHERN CALIFORNIA EDISON COMPANY
PURPOSE: PUBLIC UTILITIES
RECORDED: JANUARY 31, 1951, INSTRUMENT NO. 2502, BOOK 37930, PAGE 180 OF OFFICIAL RECORDS
AFFECTS: A PORTION OF PARCEL 4 AS MORE PARTICULARLY DESCRIBED THEREIN

25. EASEMENT(S) FOR THE PURPOSE(S) SHOWN BELOW AND RIGHTS INCIDENTAL THERETO, AS GRANTED IN A DOCUMENT:
GRANTED TO: THE CITY OF INGLEWOOD
PURPOSE: STORM DRAIN
RECORDED: JULY 06, 1934, INSTRUMENT NO. 2788, BOOK 45074, PAGE 38 OF OFFICIAL RECORDS
AFFECTS: A PORTION OF PARCEL 4 AS MORE PARTICULARLY DESCRIBED THEREIN

27. MATTERS CONTAINED IN THAT CERTAIN DOCUMENT ENTITLED "STORM DRAIN EASEMENT AGREEMENT" DATED OCTOBER 16, 2003, EXECUTED BY AND BETWEEN HOME DEPOT U.S.A., INC., A DELAWARE CORPORATION, AND TARGET CORPORATION, A MINNESOTA CORPORATION, RECORDED OCTOBER 20, 2003, INSTRUMENT NO. 00-1643133 OF OFFICIAL RECORDS

28. AN IRREVOCABLE OFFER TO DEDICATE AN EASEMENT OVER A PORTION OF SAID LAND FOR AVIATION:
RECORDED: JULY 07, 2009, INSTRUMENT NO. 200901004 OF OFFICIAL RECORDS
AFFECTS: A PORTION OF PARCEL 4 AS MORE PARTICULARLY DESCRIBED THEREIN

37. MATTERS CONTAINED IN THAT CERTAIN DOCUMENT ENTITLED "ASSIGNMENT AND ASSUMPTION OF RESERVED EASEMENTS (CIVIC SITE)" DATED JUNE 04, 2014, EXECUTED BY AND BETWEEN HOLLYWOOD PARK RESIDENTIAL INVESTORS, LLC, A DELAWARE LIMITED LIABILITY COMPANY, AND HOLLYWOOD PARK RETAIL/COMMERCIAL INVESTORS, LLC, A DELAWARE LIMITED LIABILITY COMPANY, RECORDED JUNE 05, 2014, INSTRUMENT NO. 2014050284 OF OFFICIAL RECORDS

41. MATTERS CONTAINED IN THAT CERTAIN DOCUMENT ENTITLED "RECIPROCAL EASEMENT AGREEMENT" DATED APRIL 28, 2015, EXECUTED BY AND BETWEEN HOLLYWOOD PARK RESIDENTIAL INVESTORS, LLC, A DELAWARE LIMITED LIABILITY COMPANY, HOLLYWOOD PARK RETAIL/COMMERCIAL INVESTORS, LLC, A DELAWARE LIMITED LIABILITY COMPANY, AND HOLLYWOOD PARK CARD CLUB INVESTORS, LLC, A DELAWARE LIMITED LIABILITY COMPANY, RECORDED MAY 01, 2015, INSTRUMENT NO. 2015050025 OF OFFICIAL RECORDS

45. EASEMENT(S) FOR THE PURPOSE(S) SHOWN BELOW AND RIGHTS INCIDENTAL THERETO, AS GRANTED IN A DOCUMENT:
GRANTED TO: THE CITY OF INGLEWOOD
PURPOSE: TRAFFIC CONTROL SIGNALS
RECORDED: JANUARY 13, 1941, INSTRUMENT NO. 1580, BOOK 29163, PAGE 306 OF OFFICIAL RECORDS
AFFECTS: A PORTION OF PARCEL 7 AS MORE PARTICULARLY DESCRIBED THEREIN

46. EASEMENT(S) FOR THE PURPOSE(S) SHOWN BELOW AND RIGHTS INCIDENTAL THERETO, AS GRANTED IN A DOCUMENT:
GRANTED TO: LOS ANGELES COUNTY SANITATION DISTRICT NO. 5
PURPOSE: SEWER, AND THE RIGHT TO LAY, CONSTRUCT, MAINTAIN, RECONSTRUCT, USE AND OPERATE SEWER PIPELINE
RECORDED: JANUARY 10, 1951, INSTRUMENT NO. 3434, BOOK 36015, PAGE 410 OF OFFICIAL RECORDS
AFFECTS: A 10 FOOT WIDE STRIP AS THEREIN DESCRIBED

MATTERS CONTAINED IN THAT CERTAIN DOCUMENT ENTITLED "SEWER MANAGEMENT AGREEMENT" EXECUTED BY AND BETWEEN COUNTY SANITATION DISTRICT NO. 5 OF LOS ANGELES COUNTY AND HOLLYWOOD PARK RESIDENTIAL INVESTORS, LLC AND PINKY RE, LLC RECORDED MARCH 21, 2017, INSTRUMENT NO. 2017-0315154 OF OFFICIAL RECORDS

47. EASEMENT(S) FOR THE PURPOSE(S) SHOWN BELOW AND RIGHTS INCIDENTAL THERETO, AS GRANTED IN A DOCUMENT:
GRANTED TO: THE CITY OF INGLEWOOD
PURPOSE: PIPELINES
RECORDED: MAY 07, 1953, INSTRUMENT NO. 2232, BOOK 41884, PAGE 422 OF OFFICIAL RECORDS
AFFECTS: A 5 FOOT WIDE STRIP AS THEREIN DESCRIBED

48. EASEMENT(S) FOR THE PURPOSE(S) SHOWN BELOW AND RIGHTS INCIDENTAL THERETO, AS GRANTED IN A DOCUMENT:
GRANTED TO: THE CITY OF INGLEWOOD
PURPOSE: TRAFFIC CONTROL SIGNALS
RECORDED: SEPTEMBER 26, 1960, INSTRUMENT NO. 2813, BOOK 0-986, PAGE 145 OF OFFICIAL RECORDS
AFFECTS: A PORTION OF PARCEL 7 AS MORE PARTICULARLY DESCRIBED THEREIN

50. EASEMENT(S) FOR THE PURPOSE(S) SHOWN BELOW AND RIGHTS INCIDENTAL THERETO, AS GRANTED IN A DOCUMENT:
GRANTED TO: GETTY OIL COMPANY
PURPOSE: PIPELINES
RECORDED: JUNE 28, 1980, INSTRUMENT NO. 2718, BOOK 0-4876, PAGE 860 OF OFFICIAL RECORDS
AFFECTS: A PORTION OF PARCEL 7 AS MORE PARTICULARLY DESCRIBED THEREIN

51. EASEMENT(S) FOR THE PURPOSE(S) SHOWN BELOW AND RIGHTS INCIDENTAL THERETO, AS GRANTED IN A DOCUMENT:
GRANTED TO: THE CITY OF INGLEWOOD
PURPOSE: WATER PIPELINES
RECORDED: NOVEMBER 24, 1971, INSTRUMENT NO. 3294, BOOK 0-5268, PAGE 393 OF OFFICIAL RECORDS
AFFECTS: A PORTION OF PARCEL 7 AS MORE PARTICULARLY DESCRIBED THEREIN

52. EASEMENT(S) FOR THE PURPOSE(S) SHOWN BELOW AND RIGHTS INCIDENTAL THERETO, AS GRANTED IN A DOCUMENT:
GRANTED TO: SOUTHERN CALIFORNIA EDISON COMPANY
PURPOSE: PUBLIC UTILITIES
RECORDED: MARCH 29, 1972, INSTRUMENT NO. 3076, BOOK 0-5403, PAGE 572 OF OFFICIAL RECORDS
AFFECTS: A 10 FOOT STRIP OF LAND AS THEREIN DESCRIBED

53. EASEMENT(S) FOR THE PURPOSE(S) SHOWN BELOW AND RIGHTS INCIDENTAL THERETO, AS GRANTED IN A DOCUMENT:
GRANTED TO: SOUTHERN CALIFORNIA GAS COMPANY
PURPOSE: GAS PIPELINES
RECORDED: JUNE 19, 1972, INSTRUMENT NO. 2943, BOOK 0-6489, PAGE 861 OF OFFICIAL RECORDS
AFFECTS: A 10 FOOT STRIP OF LAND AS THEREIN DESCRIBED

54. EASEMENT(S) FOR THE PURPOSE(S) SHOWN BELOW AND RIGHTS INCIDENTAL THERETO, AS GRANTED IN A DOCUMENT:
GRANTED TO: GETTY OIL COMPANY
PURPOSE: GAS PIPELINES
RECORDED: AUGUST 03, 1970, INSTRUMENT NO. 3346 OF OFFICIAL RECORDS
AFFECTS: A 10 FOOT STRIP OF LAND AS THEREIN DESCRIBED

55. EASEMENT(S) FOR THE PURPOSE(S) SHOWN BELOW AND RIGHTS INCIDENTAL THERETO, AS GRANTED IN A DOCUMENT:
GRANTED TO: PACIFIC TELEPHONE AND TELEGRAPH COMPANY
PURPOSE: CABLES, CONDUITS AND MANHOLES, MARKERS, PEDESTRIANS, AND NECESSARY FEATURES AND
RECORDED: AUGUST 10, 1970, INSTRUMENT NO. 4103, BOOK 0-5386, PAGE 632 OF OFFICIAL RECORDS
AFFECTS: A 5 FOOT STRIP OF LAND AS THEREIN DESCRIBED

56. EASEMENT(S) FOR THE PURPOSE(S) SHOWN BELOW AND RIGHTS INCIDENTAL THERETO, AS GRANTED IN A DOCUMENT:
GRANTED TO: LOS ANGELES COUNTY FLOOD CONTROL DISTRICT
PURPOSE: A COVERED STORM DRAIN
RECORDED: NOVEMBER 30, 1976, INSTRUMENT NO. 3081, BOOK 0-7336, PAGE 142 OF OFFICIAL RECORDS
AFFECTS: A PORTION OF PARCEL 8 AS MORE PARTICULARLY DESCRIBED THEREIN

58. EASEMENT(S) FOR THE PURPOSE(S) SHOWN BELOW AND RIGHTS INCIDENTAL THERETO, AS GRANTED IN A DOCUMENT:
GRANTED TO: LOS ANGELES COUNTY FLOOD CONTROL DISTRICT
PURPOSE: STORM DRAIN
RECORDED: FEBRUARY 19, 1932, BOOK 11481, PAGE 18 OF OFFICIAL RECORDS
AFFECTS: A PORTION OF PARCEL 8 AS MORE PARTICULARLY DESCRIBED THEREIN

EASEMENTS OF RECORD (CONT.)

NUMBERING PER FIDELITY NATIONAL TITLE COMPANY PRELIMINARY TITLE REPORT NO. 986-25002488-A-4612
DATE: MARCH 5, 2016

67. EASEMENT(S) FOR THE PURPOSE(S) SHOWN BELOW AND RIGHTS INCIDENTAL THERETO, AS GRANTED IN A DOCUMENT:
GRANTED TO: THE CITY OF INGLEWOOD
PURPOSE: PIPE LINES
RECORDED: MAY 07, 1953, INSTRUMENT NO. 2521, BOOK 37930, PAGE 182 OF OFFICIAL RECORDS
AFFECTS: A 5 FOOT WIDE STRIP AS MORE PARTICULARLY DESCRIBED THEREIN

70. EASEMENT(S) FOR THE PURPOSE(S) SHOWN BELOW AND RIGHTS INCIDENTAL THERETO, AS GRANTED IN A DOCUMENT:
GRANTED TO: GETTY OIL COMPANY
PURPOSE: PIPELINES
RECORDED: AUGUST 25, 1984, INSTRUMENT NO. 2718, BOOK 0-4876, PAGE 860 OF OFFICIAL RECORDS
AFFECTS: A 10 FOOT WIDE STRIP AS MORE PARTICULARLY DESCRIBED THEREIN

71. EASEMENT(S) FOR THE PURPOSE(S) SHOWN BELOW AND RIGHTS INCIDENTAL THERETO, AS GRANTED IN A DOCUMENT:
GRANTED TO: THE CITY OF INGLEWOOD
PURPOSE: WATER PIPELINES
RECORDED: NOVEMBER 24, 1971, INSTRUMENT NO. 3294, BOOK 0-5268, PAGE 393 OF OFFICIAL RECORDS
AFFECTS: A PORTION OF PARCEL 8 AS MORE PARTICULARLY DESCRIBED THEREIN

72. EASEMENT(S) FOR THE PURPOSE(S) SHOWN BELOW AND RIGHTS INCIDENTAL THERETO, AS GRANTED IN A DOCUMENT:
GRANTED TO: SOUTHERN CALIFORNIA EDISON COMPANY
PURPOSE: PUBLIC UTILITIES
RECORDED: MARCH 29, 1972, INSTRUMENT NO. 3076, BOOK 0-5403, PAGE 572 OF OFFICIAL RECORDS
AFFECTS: A 10 FOOT WIDE STRIP AS MORE PARTICULARLY DESCRIBED THEREIN

73. EASEMENT(S) FOR THE PURPOSE(S) SHOWN BELOW AND RIGHTS INCIDENTAL THERETO, AS GRANTED IN A DOCUMENT:
GRANTED TO: SOUTHERN CALIFORNIA GAS COMPANY
PURPOSE: PIPELINES
RECORDED: JUNE 19, 1972, INSTRUMENT NO. 2943, BOOK 0-6489, PAGE 861 OF OFFICIAL RECORDS
AFFECTS: A 5 FOOT WIDE STRIP AS MORE PARTICULARLY DESCRIBED THEREIN

74. EASEMENT(S) FOR THE PURPOSE(S) SHOWN BELOW AND RIGHTS INCIDENTAL THERETO, AS GRANTED IN A DOCUMENT:
GRANTED TO: GETTY OIL COMPANY
PURPOSE: PIPELINES
RECORDED: AUGUST 03, 1970, INSTRUMENT NO. 3346 OF OFFICIAL RECORDS
AFFECTS: A PORTION OF PARCEL 8 AS MORE PARTICULARLY DESCRIBED THEREIN

75. EASEMENT(S) FOR THE PURPOSE(S) SHOWN BELOW AND RIGHTS INCIDENTAL THERETO, AS GRANTED IN A DOCUMENT:
GRANTED TO: PACIFIC TELEPHONE AND TELEGRAPH COMPANY
PURPOSE: CABLES, CONDUITS AND MANHOLES, MARKERS, PEDESTRIANS AND NECESSARY FEATURES AND
RECORDED: AUGUST 10, 1970, INSTRUMENT NO. 4103, BOOK 0-5386, PAGE 632 OF OFFICIAL RECORDS
AFFECTS: A 5 FOOT WIDE STRIP AS MORE PARTICULARLY DESCRIBED THEREIN

76. EASEMENT(S) FOR THE PURPOSE(S) SHOWN BELOW AND RIGHTS INCIDENTAL THERETO, AS GRANTED IN A DOCUMENT:
GRANTED TO: LOS ANGELES COUNTY FLOOD CONTROL DISTRICT
PURPOSE: A COVERED STORM DRAIN AND APPURTENANT STRUCTURES
RECORDED: NOVEMBER 30, 1976, INSTRUMENT NO. 3081, BOOK 0-7336, PAGE 280 OF OFFICIAL RECORDS
AFFECTS: A PORTION OF PARCEL 8 AS MORE PARTICULARLY DESCRIBED THEREIN

78. EASEMENT(S) FOR THE PURPOSE(S) SHOWN BELOW AND RIGHTS INCIDENTAL THERETO, AS GRANTED IN A DOCUMENT:
GRANTED TO: THE CITY OF INGLEWOOD
PURPOSE: TRAFFIC SIGNAL AND STREET LIGHTING
RECORDED: AUGUST 03, 1970, INSTRUMENT NO. 3346 OF OFFICIAL RECORDS
AFFECTS: A PORTION OF PARCEL 8 AS MORE PARTICULARLY DESCRIBED THEREIN

79. EASEMENT(S) FOR THE PURPOSE(S) SHOWN BELOW AND RIGHTS INCIDENTAL THERETO, AS GRANTED IN A DOCUMENT:
GRANTED TO: THE CITY OF INGLEWOOD
PURPOSE: TRAFFIC SIGNAL AND STREET LIGHTING
RECORDED: AUGUST 03, 1970, INSTRUMENT NO. 3346 OF OFFICIAL RECORDS
AFFECTS: A PORTION OF PARCEL 8 AS MORE PARTICULARLY DESCRIBED THEREIN

80. EASEMENT(S) FOR THE PURPOSE(S) SHOWN BELOW AND RIGHTS INCIDENTAL THERETO, AS GRANTED IN A DOCUMENT:
GRANTED TO: THE CITY OF INGLEWOOD
PURPOSE: TRAFFIC SIGNAL AND STREET LIGHTING
RECORDED: AUGUST 04, 1987, INSTRUMENT NO. 87-1234797 OF OFFICIAL RECORDS
AFFECTS: A PORTION OF PARCEL 8 AS MORE PARTICULARLY DESCRIBED THEREIN

88. MATTERS CONTAINED IN THAT CERTAIN DOCUMENT ENTITLED "RECIPROCAL EASEMENT AGREEMENT" DATED APRIL 28, 2015, EXECUTED BY AND BETWEEN HOLLYWOOD PARK RESIDENTIAL INVESTORS, LLC, A DELAWARE LIMITED LIABILITY COMPANY, HOLLYWOOD PARK RETAIL/COMMERCIAL INVESTORS, LLC, A DELAWARE LIMITED LIABILITY COMPANY, AND HOLLYWOOD PARK CARD CLUB INVESTORS, LLC, A DELAWARE LIMITED LIABILITY COMPANY, RECORDED MAY 01, 2015, INSTRUMENT NO. 2015050025 OF OFFICIAL RECORDS

89. EASEMENT(S) FOR THE PURPOSE(S) SHOWN BELOW AND RIGHTS INCIDENTAL THERETO, AS GRANTED IN A DOCUMENT:
GRANTED TO: THE CITY OF INGLEWOOD
PURPOSE: TRAFFIC CONTROL SIGNALS, BEWICKS AND FACILITIES FOR THE CONTROL, DIRECTION, AND REGULATION OF PEDESTRIAN AND VEHICULAR TRAFFIC
RECORDED: MARCH 21, 1983, INSTRUMENT NO. 4622, IN BOOK 0-1982, PAGE 75 OF OFFICIAL RECORDS
AFFECTS: A PORTION OF PARCEL 9 AS MORE PARTICULARLY DESCRIBED THEREIN

EASEMENTS OF RECORD (CONT.)

NUMBERING PER FIDELITY NATIONAL TITLE COMPANY PRELIMINARY TITLE REPORT NO. 986-25002488-A-4612
DATE: MARCH 5, 2016

100. EASEMENT(S) FOR THE PURPOSE(S) SHOWN BELOW AND RIGHTS INCIDENTAL THERETO, AS GRANTED IN A DOCUMENT:
GRANTED TO: LOS ANGELES COUNTY FLOOD CONTROL DISTRICT
PURPOSE: COVERED STORM DRAIN
RECORDED: NOVEMBER 30, 1976, INSTRUMENT NO. 3081, BOOK 0-7336, PAGE 142 OF OFFICIAL RECORDS
AFFECTS: A PORTION OF PARCEL 9 AS MORE PARTICULARLY DESCRIBED THEREIN

103. MATTERS CONTAINED IN THAT CERTAIN DOCUMENT ENTITLED "STORM DRAIN EASEMENT AGREEMENT" DATED OCTOBER 16, 2003, EXECUTED BY AND BETWEEN CHURCH & DWIGHT CALIFORNIA COMPANY, A MARYLAND CORPORATION, AND TARGET CORPORATION, A MINNESOTA CORPORATION, RECORDED OCTOBER 20, 2003, INSTRUMENT NO. 00-1643133 OF OFFICIAL RECORDS

106. AN IRREVOCABLE OFFER TO DEDICATE AN EASEMENT OVER A PORTION OF SAID LAND FOR AVIATION:
RECORDED: JULY 07, 2009, INSTRUMENT NO. 200901004 OF OFFICIAL RECORDS
AFFECTS: A PORTION OF PARCEL 9 AS MORE PARTICULARLY DESCRIBED THEREIN

114. MATTERS CONTAINED IN THAT CERTAIN DOCUMENT ENTITLED "CARD CLUB ENCROACHMENT EASEMENT AGREEMENT" DATED JUNE 04, 2014, EXECUTED BY AND BETWEEN HOLLYWOOD PARK RESIDENTIAL INVESTORS, LLC, A DELAWARE LIMITED LIABILITY COMPANY, HOLLYWOOD PARK RETAIL/COMMERCIAL INVESTORS, LLC, A DELAWARE LIMITED LIABILITY COMPANY, AND HOLLYWOOD PARK CARD CLUB INVESTORS, LLC, A DELAWARE LIMITED LIABILITY COMPANY, RECORDED JUNE 05, 2014, INSTRUMENT NO. 2014050284 OF OFFICIAL RECORDS

115. EASEMENT(S) FOR THE PURPOSE(S) SHOWN BELOW AND RIGHTS INCIDENTAL THERETO, AS GRANTED IN A DOCUMENT:
GRANTED TO: SOUTHERN CALIFORNIA EDISON COMPANY
PURPOSE: PUBLIC UTILITIES
RECORDED: MARCH 29, 1972, INSTRUMENT NO. 3076, BOOK 0-5403, PAGE 572 OF OFFICIAL RECORDS
AFFECTS: A PORTION OF SAID LAND AS MORE PARTICULARLY DESCRIBED THEREIN

117. MATTERS CONTAINED IN THAT CERTAIN DOCUMENT ENTITLED "RECIPROCAL EASEMENT AGREEMENT" DATED APRIL 28, 2015, EXECUTED BY AND BETWEEN HOLLYWOOD PARK RESIDENTIAL INVESTORS, LLC, A DELAWARE LIMITED LIABILITY COMPANY, HOLLYWOOD PARK RETAIL/COMMERCIAL INVESTORS, LLC, A DELAWARE LIMITED LIABILITY COMPANY, AND HOLLYWOOD PARK CARD CLUB INVESTORS, LLC, A DELAWARE LIMITED LIABILITY COMPANY, RECORDED MAY 01, 2015, INSTRUMENT NO. 2015050025 OF OFFICIAL RECORDS

122. EASEMENT(S) FOR THE PURPOSE(S) SHOWN BELOW AND RIGHTS INCIDENTAL THERETO, AS GRANTED IN A DOCUMENT:
GRANTED TO: THE CITY OF INGLEWOOD
PURPOSE: TELEPHONE OR TELEVISION LINES AND CONDUITS
RECORDED: JULY 09, 1937, IN BOOK 15128, PAGE 88 OF OFFICIAL RECORDS
AFFECTS: A PORTION OF PARCELS 7 AND 8 AS MORE PARTICULARLY DESCRIBED THEREIN

123. EASEMENT(S) FOR THE PURPOSE(S) SHOWN BELOW AND RIGHTS INCIDENTAL THERETO, AS GRANTED IN A DOCUMENT:
GRANTED TO: GENERAL PETROLEUM CORPORATION
PURPOSE: PIPE LINES
RECORDED: MARCH 19, 1948, IN BOOK 28740, PAGE 81 OF OFFICIAL RECORDS
AFFECTS: A PORTION OF PARCELS 1, 7 AND 9 AS MORE PARTICULARLY DESCRIBED THEREIN

08/28/18

HOLLYWOOD PARK LAND CO., LLC
L.A. STADIUM AND ENTERTAINMENT DISTRICT
AT HOLLYWOOD PARK

VESTING TENTATIVE TRACT MAP
MAP NO. 80314
EASEMENTS

DATE: 08/28/18

PREPARED UNDER THE SUPERVISION OF:
KARY MULLIK, R.C.E. 42929

DAVID EVANS AND ASSOCIATES, INC.
201 G. WASHINGTON STREET, SUITE 240
LOS ANGELES, CA 90012
PHONE: 213.877.8890

DATE: 05 of 25

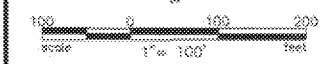
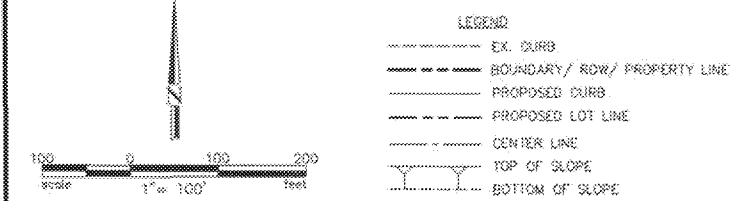
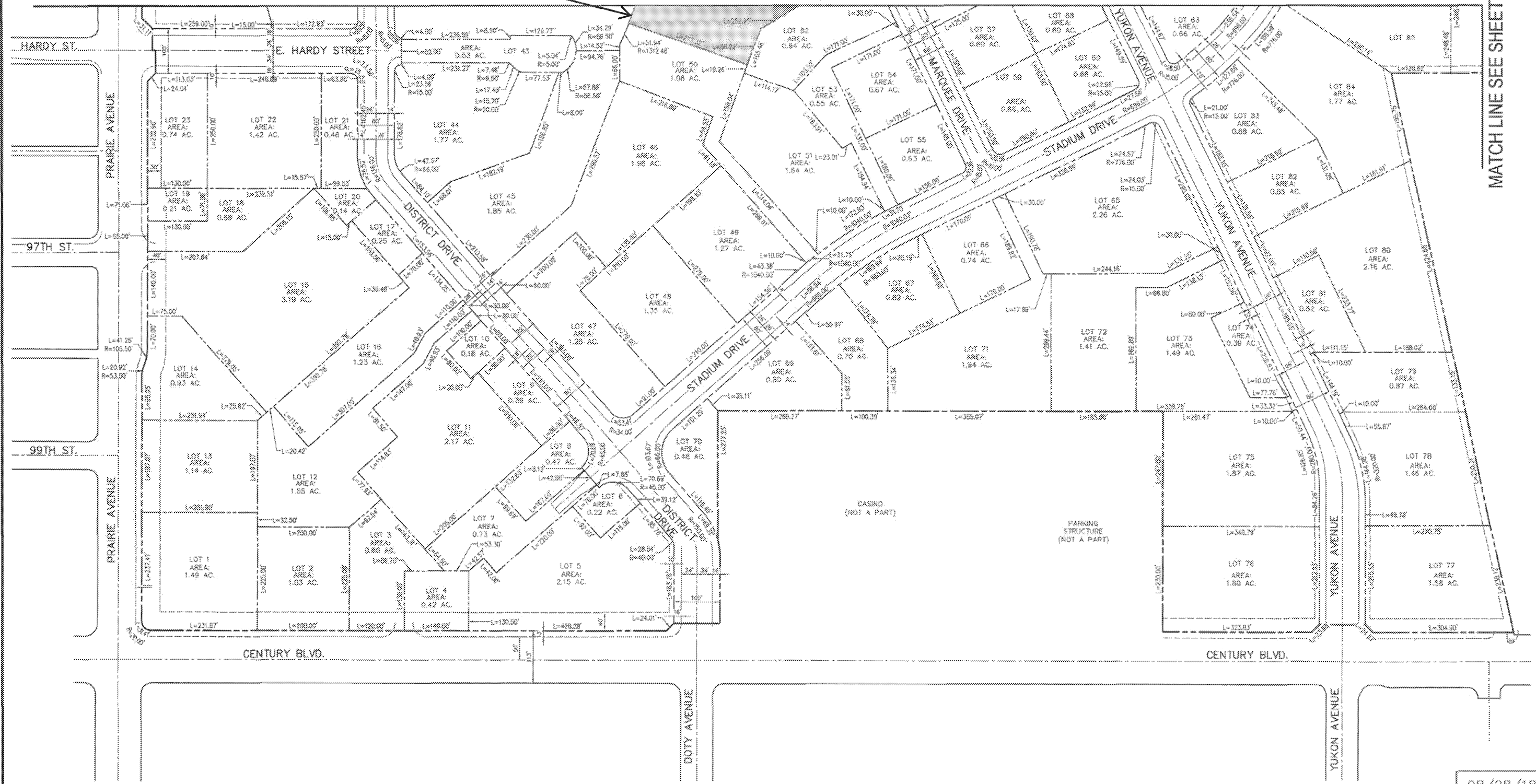
VESTING TENTATIVE TRACT MAP NO. 80314

IN THE CITY OF INGLEWOOD, CA
FOR MERGER, RESUBDIVISION AND CONDOMINIUM PURPOSES

Portion of Lake Park: Lot A

MATCH LINE SEE SHEET 08

MATCH LINE SEE SHEET 10



NOTE: SEE SHEET 11 FOR CURVE AND LENGTH TABLES

	<p>DAVID EVANS AND ASSOCIATES INC. 201 S. FIGUEROA STREET, SUITE 240 LOS ANGELES, CA 90012 Phone: 213.337.9890</p> <p>PREPARED UNDER THE SUPERVISION OF: KARL MALLICK, R.C.E. 42529</p>	<p>HOLLYWOOD PARK LAND CO., LLC L.A. STADIUM AND ENTERTAINMENT DISTRICT AT HOLLYWOOD PARK</p>
	<p>VESTING TENTATIVE TRACT MAP MAP NO. 80314 SITE PARCELS</p>	<p>SCALE: N.T.S. DATE: 08/28/18 SHEET: 07 of 25</p>

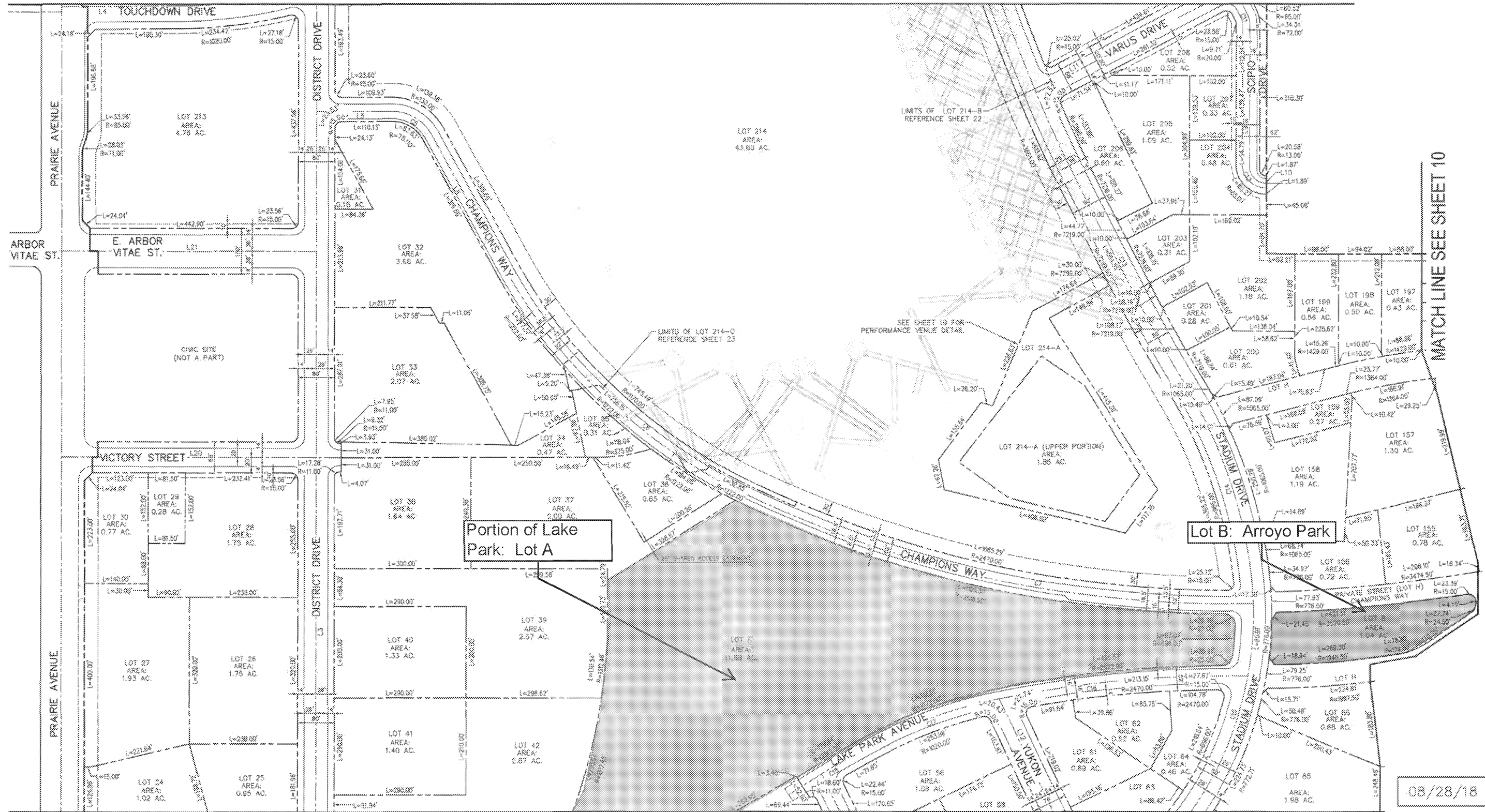
08/28/18

VESTING TENTATIVE TRACT MAP NO. 80314

IN THE CITY OF INGLEWOOD, CA

FOR MERGER, RESUBDIVISION AND CONDOMINIUM PURPOSES

MATCH LINE SEE SHEET 09



Portion of Lake Park: Lot A

Lot B: Arroyo Park

MATCH LINE SEE SHEET 10

MATCH LINE SEE SHEET 07

LEGEND

- EX. CURB
- BOUNDARY/ ROW/ PROPERTY LINE
- PROPOSED CURB
- PROPOSED LOT LINE
- CENTER LINE
- TOP OF SLOPE
- BOTTOM OF SLOPE

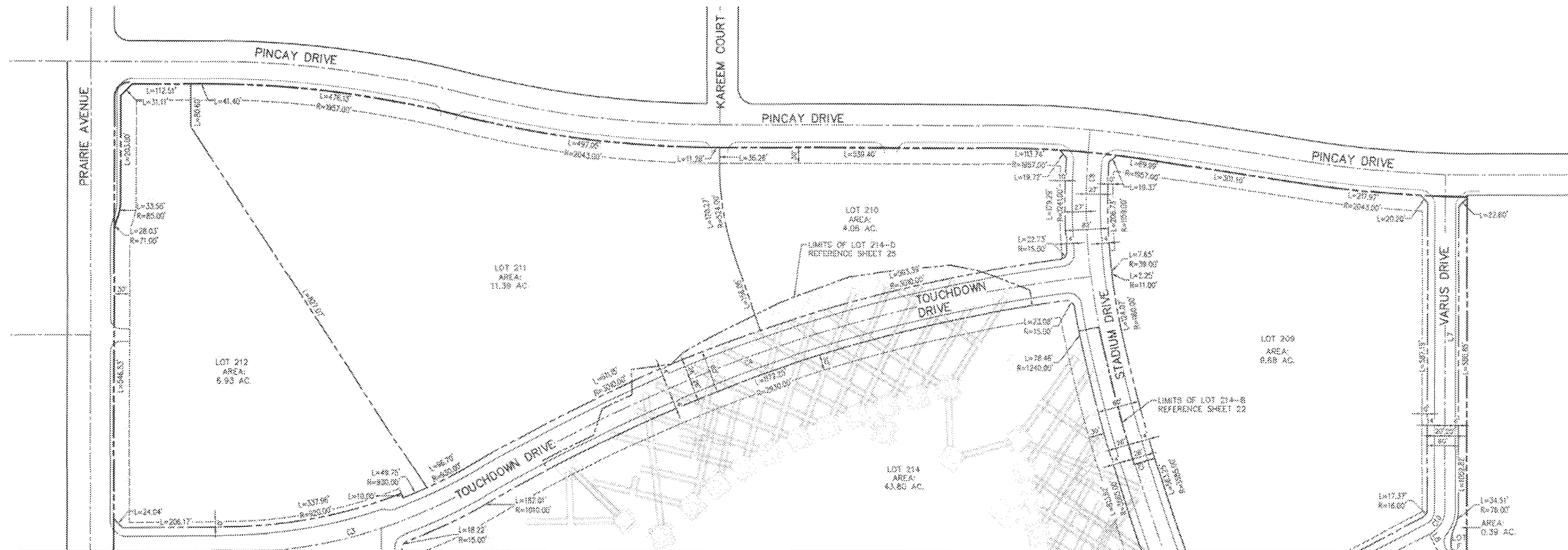
NOTE: SEE SHEET 11 FOR CURVES AND LENGTH TABLES

	<p>DAVID EVANS AND ASSOCIATES INC. 201 S. FIGUEROA STREET, SUITE 240 LOS ANGELES, CA 90012 Phone: 213.537.3880</p> <p>PREPARED UNDER THE SUPERVISION OF: KARL MALLICK, R.C.E. 42529</p>	<p>HOLLYWOOD PARK LAND CO., LLC L.A. STADIUM AND ENTERTAINMENT DISTRICT AT HOLLYWOOD PARK</p> <p>VESTING TENTATIVE TRACT MAP MAP NO. 80314 SITE PARCELS</p>
DRAWN BY: LR CHECKED BY: KM DATE: 08/28/18	APPROVED BY: <i>[Signature]</i> DATE: 7-18-18	SHEET NO.: 08 of 25 DATE: 08/28/18

08/28/18

VESTING TENTATIVE TRACT MAP NO. 80314

IN THE CITY OF INGLEWOOD, CA
FOR MERGER, RESUBDIVISION AND CONDOMINIUM PURPOSES



MATCH LINE SEE SHEET 08

08/28/18

LEGEND

- EX. CURB
- BOUNDARY/ ROW/ PROPERTY LINE
- PROPOSED CURB
- PROPOSED LOT LINE
- CENTER LINE
- TOP OF SLOPE
- BOTTOM OF SLOPE

NOTE: SEE SHEET 11 FOR CURVE AND LENGTH TABLES

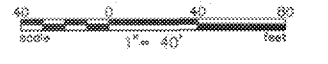
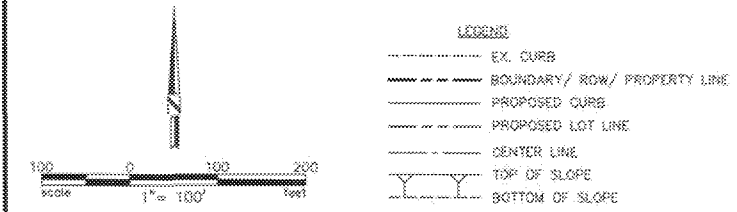
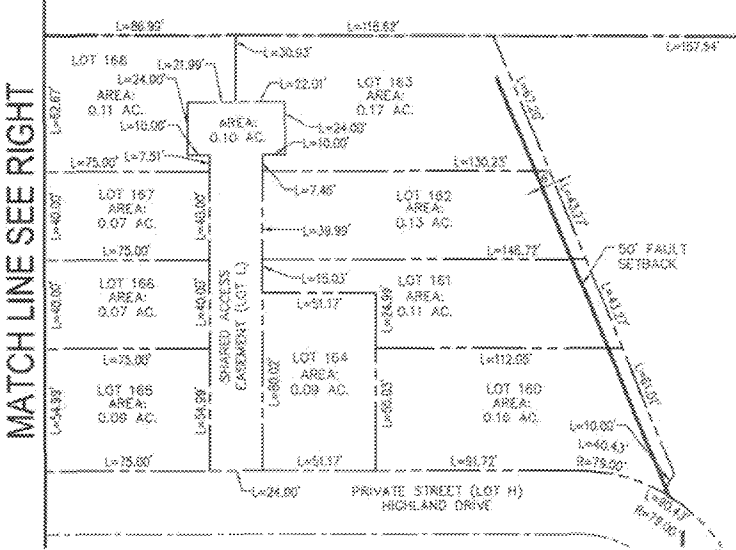
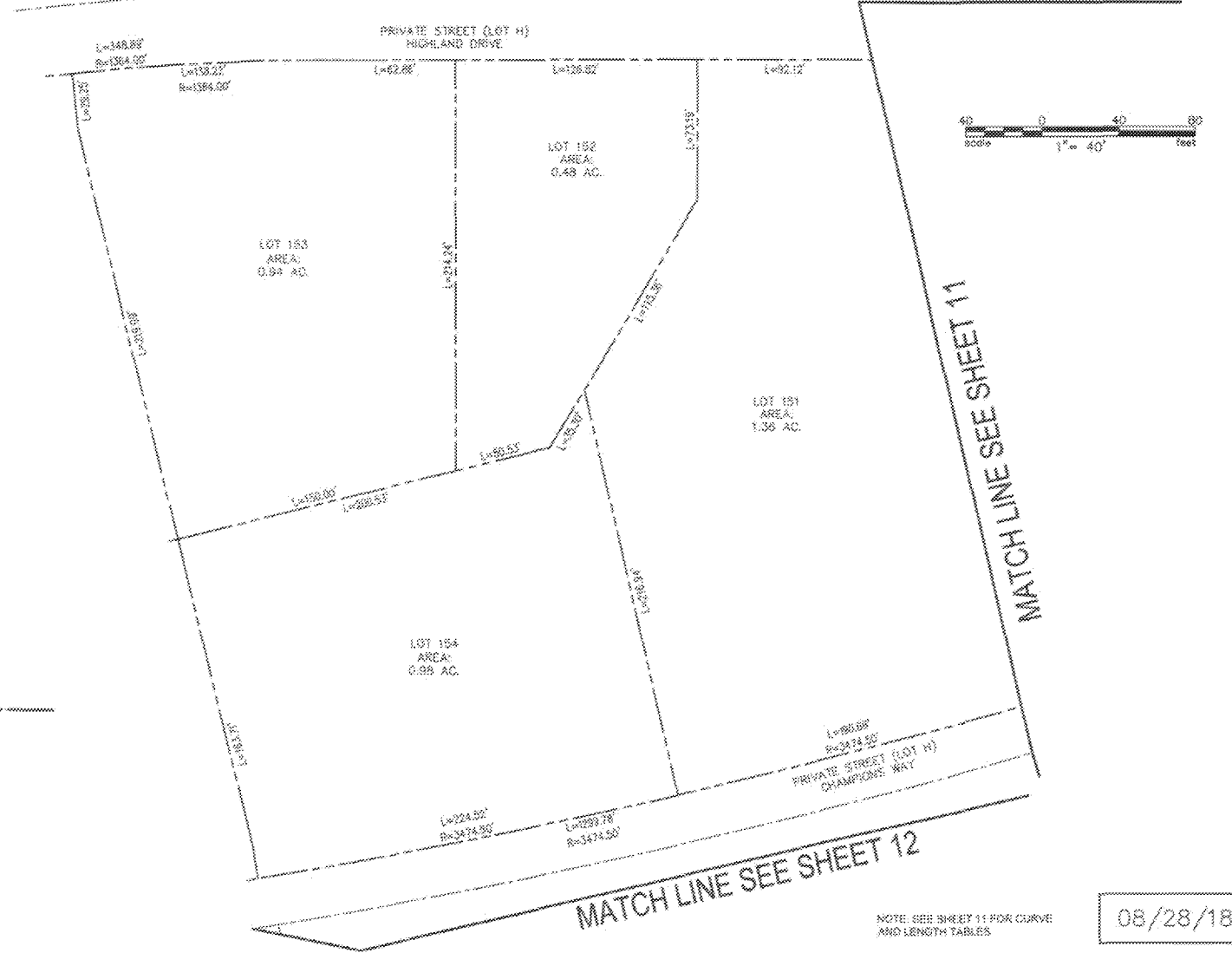
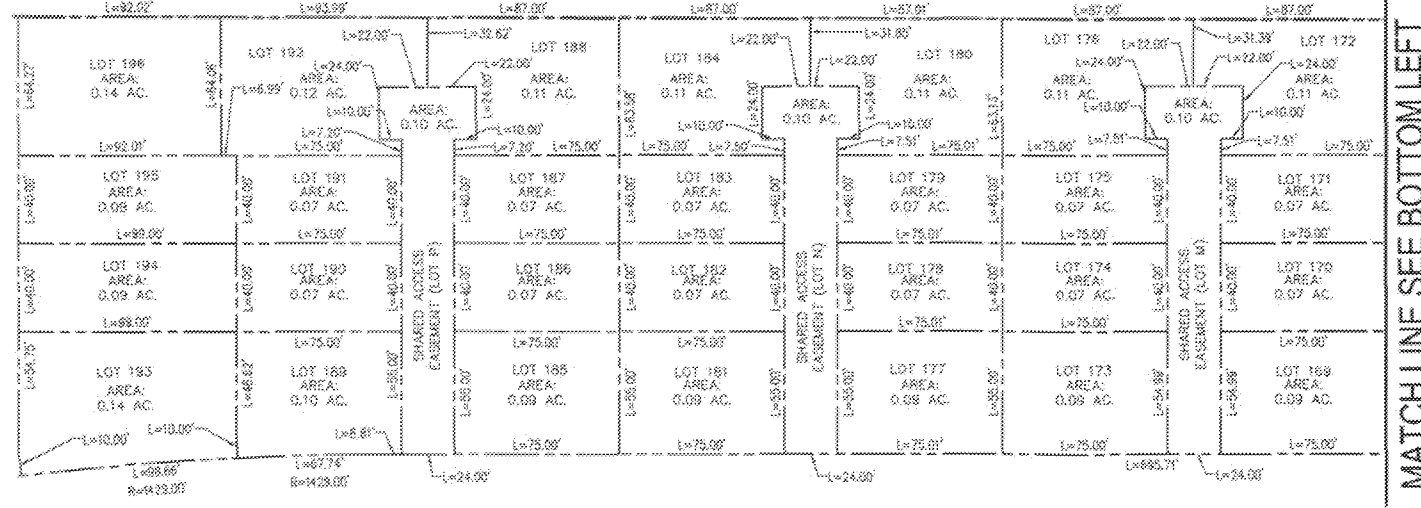
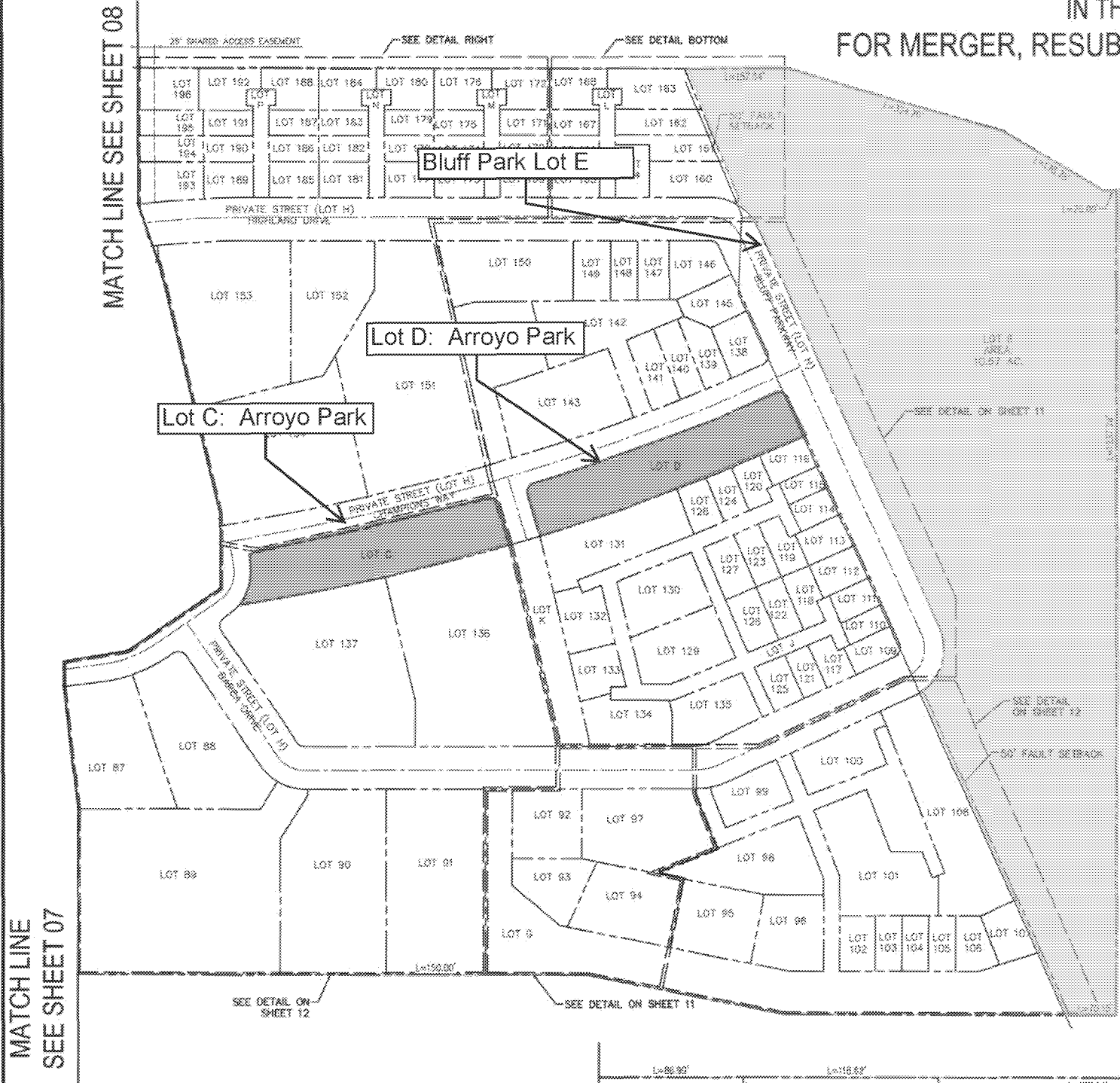
	<p>DAVID EVANS AND ASSOCIATES INC. 201 S. FIGUEROA STREET, SUITE 240 LOS ANGELES, CA 90012 Phone: 213.337.3660</p>	<p>HOLLYWOOD PARK LAND CO., LLC L.A. STADIUM AND ENTERTAINMENT DISTRICT AT HOLLYWOOD PARK</p>	
	<p>PREPARED UNDER THE SUPERVISION OF: RARL MALLICK, P.E. #42929</p>	<p>VESTING TENTATIVE TRACT MAP MAP NO. 80314 SITE PARCELS</p>	<p>DATE: 08/28/18</p>

City of Inglewood, August 28, 2018 - 11:12 AM (PST)

VESTING TENTATIVE TRACT MAP NO. 80314

IN THE CITY OF INGLEWOOD, CA

FOR MERGER, RESUBDIVISION AND CONDOMINIUM PURPOSES



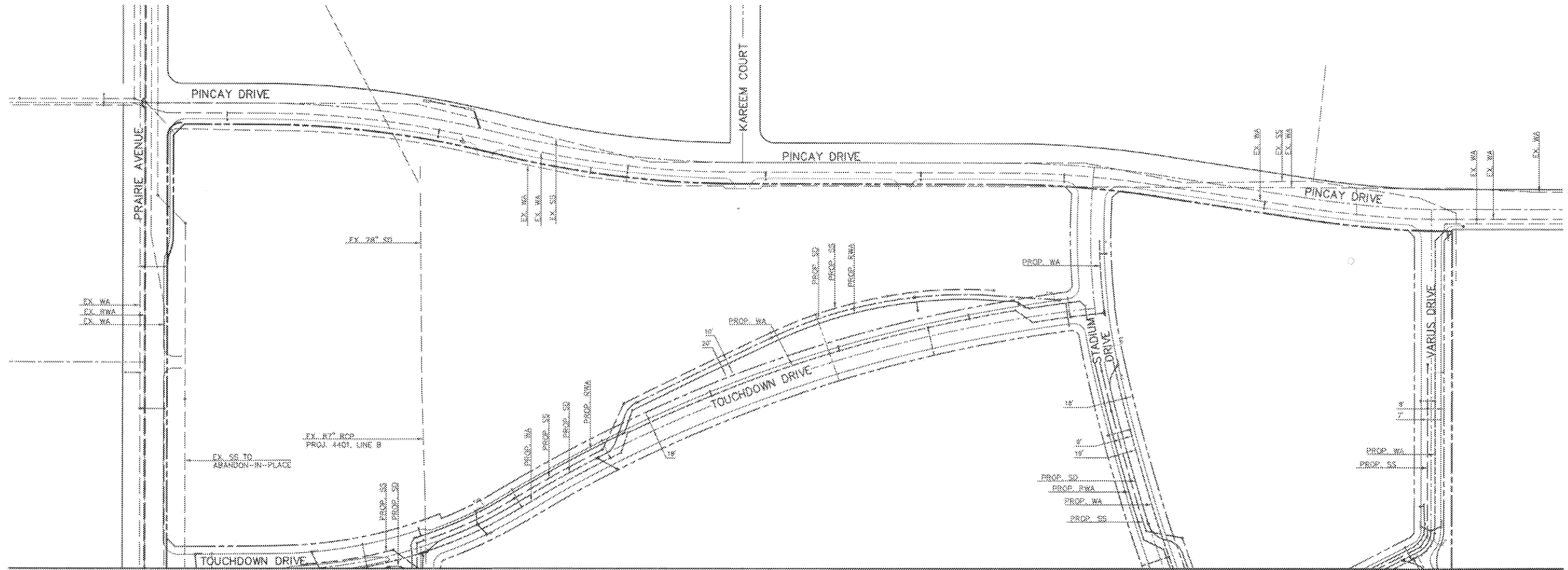
NOTE: SEE SHEET 11 FOR CURVE AND LENGTH TABLES

08/28/18

	DAVID EVANS AND ASSOCIATES, INC. 201 S. FIGUEROA STREET, SUITE 240 LOS ANGELES, CA 90012 Phone: 213.337.3880	HOLLYWOOD PARK LAND CO., LLC L.A. STADIUM AND ENTERTAINMENT DISTRICT AT HOLLYWOOD PARK	
	PREPARED UNDER THE SUPERVISION OF: KARL WALLICK, P.C.E. 42229	DATE:	VESTING TENTATIVE TRACT MAP MAP NO. 80314 SITE PARCELS

Copyright © 2018 David Evans and Associates, Inc. All rights reserved. No part of this document may be reproduced without the written permission of David Evans and Associates, Inc.

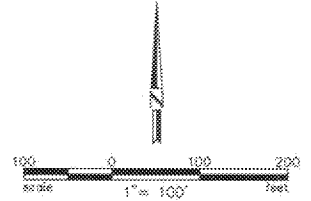
VESTING TENTATIVE TRACT MAP NO. 80314
 IN THE CITY OF INGLEWOOD, CA
 FOR MERGER, RESUBDIVISION AND CONDOMINIUM PURPOSES



MATCH LINE SEE SHEET 14

08/28/18

- LEGEND**
- | | |
|---------------------------------|-----------------------------------|
| --- EX. CURB | --- PROP. WATER (WA) |
| --- PROPOSED ROW/ PROPERTY LINE | --- PROP. RECYCLED WATER (RWA) |
| --- PROPOSED CURB | --- PROP. DBSITE STORM DRAIN (SD) |
| --- PROPOSED LOT LINE | --- PROP. SANITARY SEWER (SS) |
| --- EX. BOUNDARY | --- EXISTING OFFSITE UTILITIES |
| --- PROPOSED BOUNDARY | |
| --- CENTER LINE | |



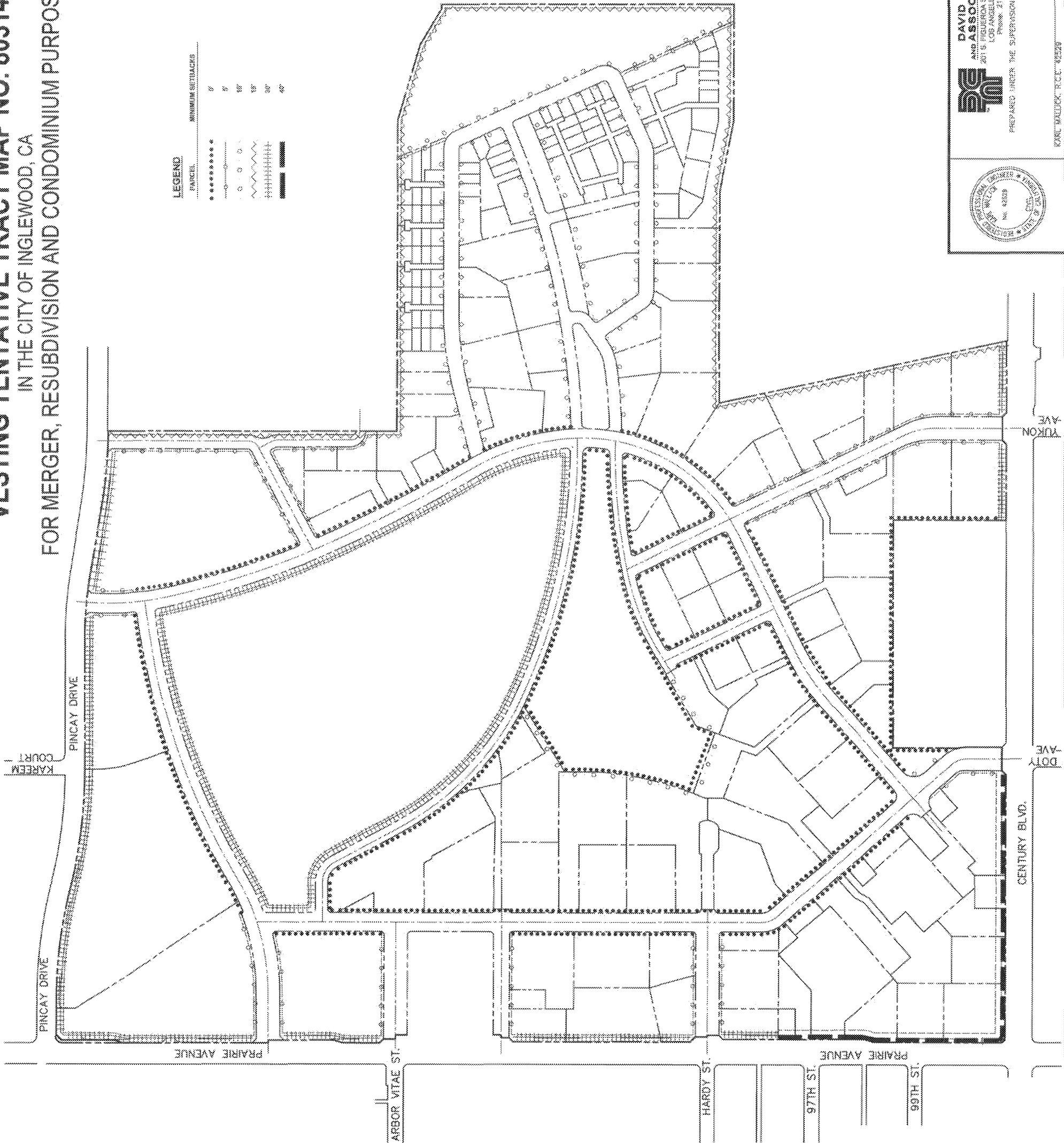
	DAVID EVANS AND ASSOCIATES INC. 201 S. FIGUEROA STREET, SUITE 240 LOS ANGELES, CA 90012 Phone: 213.337.3888	HOLLYWOOD PARK LAND CO., LLC L.A. STADIUM AND ENTERTAINMENT DISTRICT AT HOLLYWOOD PARK
	PREPARED UNDER THE SUPERVISION OF: KARL MALLIK, R.C.E. 42529	DATE: 9-18-18

Copyright © 2018 David Evans and Associates, Inc. All rights reserved. No part of this drawing may be reproduced without the written consent of David Evans and Associates, Inc.

VESTING TENTATIVE TRACT MAP NO. 80314

IN THE CITY OF INGLEWOOD, CA

FOR MERGER, RESUBDIVISION AND CONDOMINIUM PURPOSES



BUILDING SETBACK AREAS PAVING ARE TO BE PERMANENTLY LANDSCAPED, SUBJECT TO THE CITY OF INGLEWOOD'S OFFICIAL LANDSCAPE MAINTENANCE ORDINANCES OF THE HOLLYWOOD PARK STREET PLAN, FURTHER AMENDED FEBRUARY 24, 2016.

08/28/18

HOLLYWOOD PARK LAND CO., LLC
L.A. STADIUM AND ENTERTAINMENT DISTRICT
AT HOLLYWOOD PARK

DAVID EVANS
AND ASSOCIATES, INC.
201 S. FIDUCIARIA STREET, SUITE 240
LOS ANGELES, CA 90012
PHONE: 213.337.8800



VESTING TENTATIVE TRACT MAP
MAP NO 80314
SETBACKS

DATE: 8/28/18
DRAWN BY: [Signature]
CHECKED BY: [Signature]

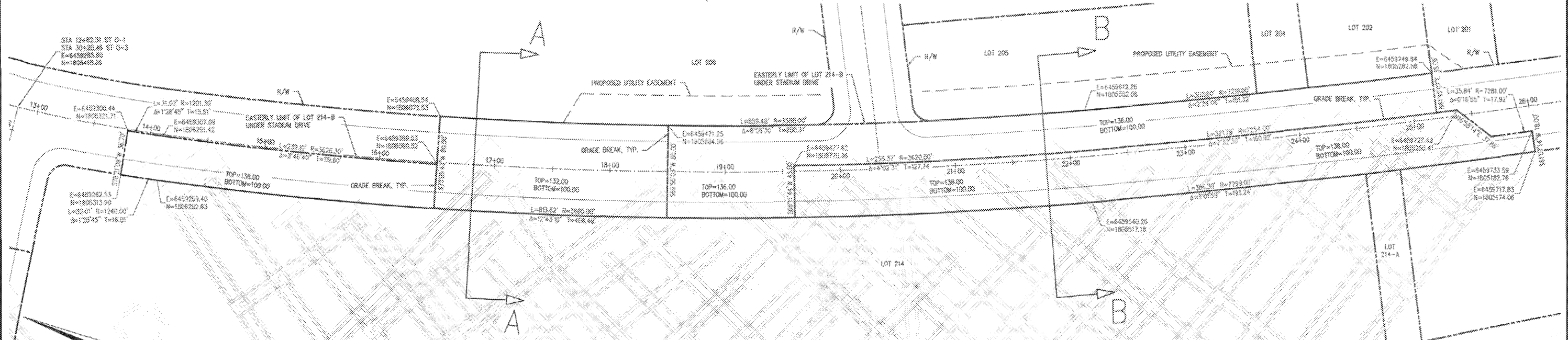
PREPARED UNDER THE SUPERVISION OF:
ERIC WALDECK, P.E., No. 42528

17 of 25

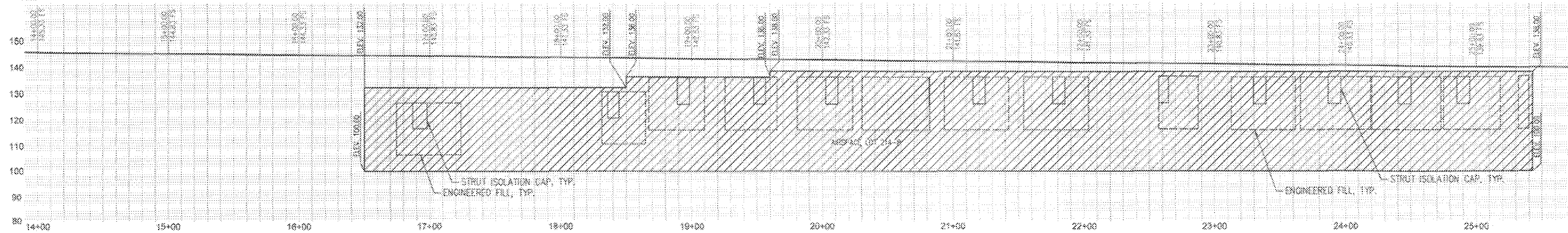
VESTING TENTATIVE TRACT MAP NO. 80314

IN THE CITY OF INGLEWOOD, CA

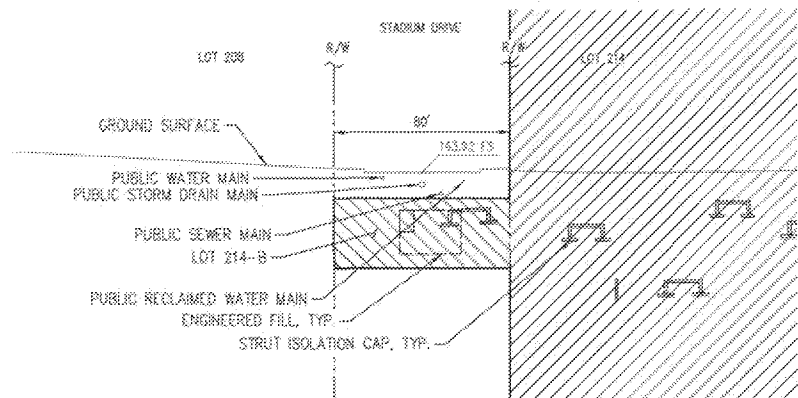
FOR MERGER, RESUBDIVISION AND CONDOMINIUM PURPOSES



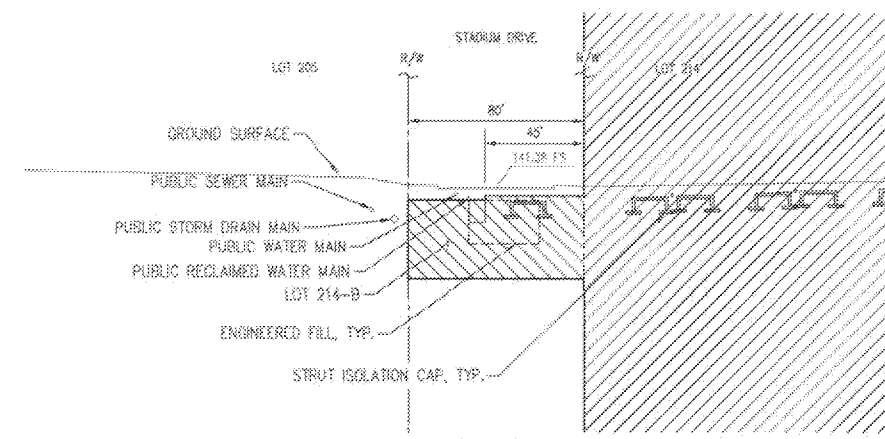
**AIRSPACE LOT 214-B ALONG STADIUM DRIVE
PLAN VIEW**



**AIRSPACE LOT 214-B ALONG STADIUM DRIVE CENTERLINE
PROFILE VIEW**



**CROSS SECTION A-A
(NOT TO SCALE)**



**CROSS SECTION B-B
(NOT TO SCALE)**

- LEGEND**
- EX. CURB
 - BOUNDARY/ ROW/ PROPERTY LINE
 - PROPOSED CURB
 - PROPOSED LOT LINE
 - CENTER LINE
 - TOP OF SLOPE
 - BOTTOM OF SLOPE

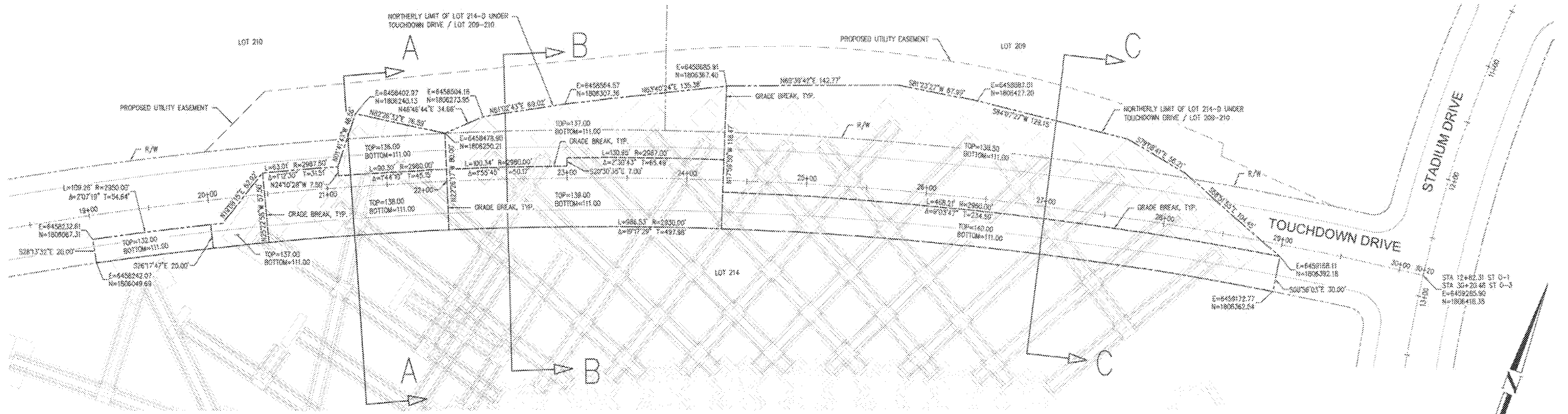
08/28/18

	DAVID EVANS AND ASSOCIATES, INC. 201 S. FIGUEROA STREET, SUITE 240 LOS ANGELES, CA 90012 Phone: 213.887.5880	HOLLYWOOD PARK LAND CO., LLC L.A. STADIUM AND ENTERTAINMENT DISTRICT AT HOLLYWOOD PARK	
	PREPARED UNDER THE SUPERVISION OF: KARL MALLICK, R.C.E. #2529	DATE:	VESTING TENTATIVE TRACT MAP MAP NO. 80314 STRUTS - STADIUM DRIVE

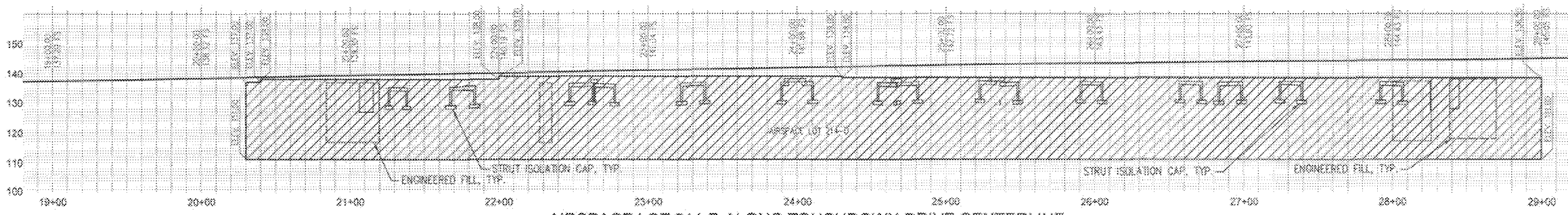
VESTING TENTATIVE TRACT MAP NO. 80314

IN THE CITY OF INGLEWOOD, CA

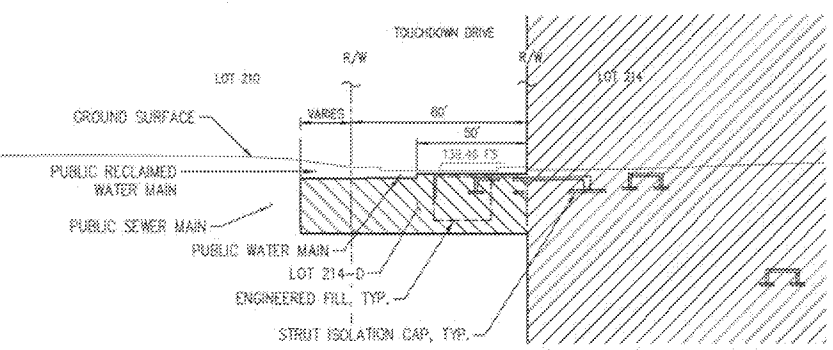
FOR MERGER, RESUBDIVISION AND CONDOMINIUM PURPOSES



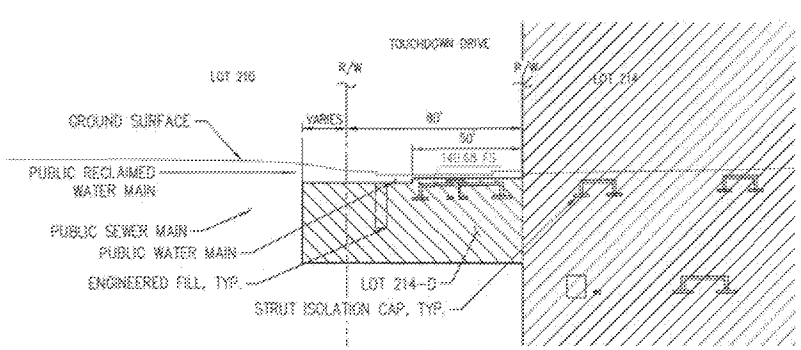
**AIRSPACE LOT 214-D ALONG TOUCHDOWN DRIVE
PLAN VIEW**



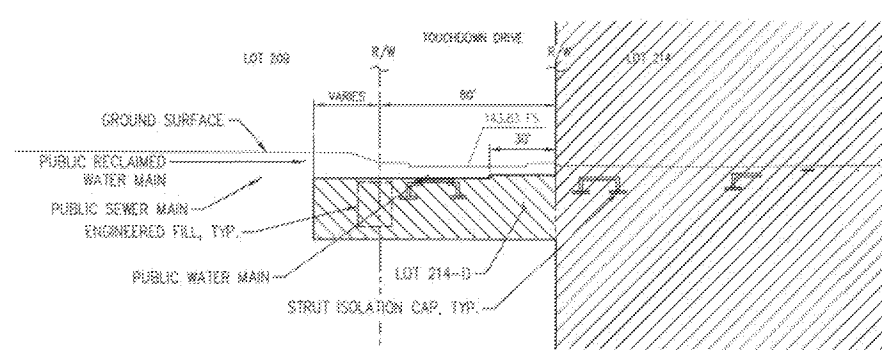
**AIRSPACE LOT 214-D ALONG TOUCHDOWN DRIVE CENTERLINE
PROFILE VIEW**



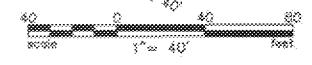
**CROSS SECTION A-A
(NOT TO SCALE)**



**CROSS SECTION B-B
(NOT TO SCALE)**



**CROSS SECTION C-C
(NOT TO SCALE)**



- LEGEND**
- EX. CURB
 - BOUNDARY/ ROW/ PROPERTY LINE
 - PROPOSED CURB
 - PROPOSED LOT LINE
 - CENTER LINE
 - TOP OF SLOPE
 - BOTTOM OF SLOPE

	DAVID EVANS AND ASSOCIATES INC. 201 S FIGUEROA STREET, SUITE 240 LOS ANGELES, CA 90012 Phone: 213.397.3990	HOLLYWOOD PARK LAND CO., LLC L.A. STADIUM AND ENTERTAINMENT DISTRICT AT HOLLYWOOD PARK
	PREPARED UNDER THE SUPERVISION OF: KARL MALLICK, R.C.S.E. 42529	VESTING TENTATIVE TRACT MAP MAP NO. 80314 STRUTS - TOUCHDOWN DRIVE

08/28/18