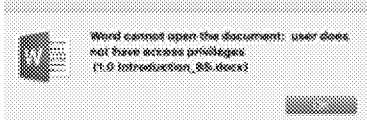


Message

**From:** Dennis Kanuk [dennis@mcadvise.com]  
**Sent:** 5/28/2019 5:31:40 PM  
**To:** Christina Erwin [/o=ExchangeLabs/ou=Exchange Administrative Group (FYDIBOHF23SPDLT)/cn=Recipients/cn=4dddfff2e8414460abdcaefc2d500dd-Christina E]  
**Subject:** Re: IBEC: Bundle 5B Sections, part 2

Hi, Christina,

Have you heard from anyone else having problems opening these Bundle 5B files? I'm getting a "user does not have access privileges" error message when I try to open the file.



I'm having a similar issue with a file from Anitra – trying to figure out if the problem is on my end.

Thanks,  
Dennis

Dennis Kanuk  
**MONTGOMERY CLARK ADVISORS**  
10877 Wilshire Blvd. Ste. 1102  
Los Angeles, CA 90024  
E-Mail: [Dennis@mcadvise.com](mailto:Dennis@mcadvise.com)  
Office: (310) 443-7711  
Mobile: (213) 309-5652

---

**From:** Christina Erwin <CERwin@esassoc.com>  
**Date:** Sunday, May 26, 2019 at 1:29 PM  
**To:** Mindala Wilcox <mwilcox@cityofinglewood.org>, Fred Jackson <fljackson@cityofinglewood.org>, Chris Jackson <cejackson@cityofinglewood.org>, "Royce K. Jones (royce@kbblaw.com)" <royce@kbblaw.com>, Lisa Trifiletti <lisa@trifiletticonsulting.com>, Catherine Aguilar <catherine@trifiletticonsulting.com>, Perla Solis <perla@trifiletticonsulting.com>, Whit Manley <WManley@rmmenvirolaw.com>, Tiffany Wright <twright@rmmenvirolaw.com>, Dennis Kanuk <dennis@mcadvise.com>, Loren Montgomery <loren@mcadvise.com>, Chris Holmquist <CHolmquist@wilsonmeany.com>, Gerard McCallum <gmccallum@wilsonmeany.com>, Dan Gershwin <dgershwin@coblentzlaw.com>, "Via, Tay" <tvia@coblentzlaw.com>, Robert Hodil <rhodil@coblentzlaw.com>, Brian Boxer <BBoxer@esassoc.com>, Addie Farrell <AFarrell@esassoc.com>, John Gard <j.gard@fehrandpeers.com>, Tom Gaul <t.gaul@fehrandpeers.com>, Netai Basu <n.basu@fehrandpeers.com>, IBECproject <IBECproject@esassoc.com>  
**Subject:** IBEC: Bundle 5B Sections, part 2

Team,

At the links below, please find the second set of Bundle 5B sections: Geology and Soils; Population, Employment, and Housing; and Public Services. The links below will expire in 14 days, so be sure to access and save the files appropriately. If you have any questions about this information, or trouble accessing the files, please let me know.

[3.6 Geology and Soils\\_B5.docx](#) ,  
[3.12 Population Employment Housing\\_B5.docx](#) ,  
[3.13 Public Services\\_B5.docx](#)

Thanks,  
Christina

**Christina Erwin**  
Environmental Planning Program Manager

ESA | Environmental Science Associates  
*Celebrating 50 Years of Work that Matters!*  
2900 Capitol Ave, Suite 200  
Sacramento, California 95816  
916.231.1271 direct | 916.997.1865 cell | 916.564.4500 main  
[cerwin@esassoc.com](mailto:cerwin@esassoc.com) | [www.esassoc.com](http://www.esassoc.com)

Follow us on [LinkedIn](#) | [Facebook](#) | [Twitter](#) | [Instagram](#) | [Vimeo](#)